



FDNY®

FIRE TRUCK
TOWER LADDER 9



Pack 11

BUILD INSTRUCTIONS

BUILDING THE DIORAMA

AGORA
MODELS

Advice from the experts

 **Please keep ALL unused screws as they will be required in a later stage.**

Please make sure you don't mix up the screws. They look quite similar, but the threads do vary slightly. Using the wrong screws may damage the parts.

When securing parts together using multiple screws, fit each screw loosely to ensure all the parts are correctly aligned before gently tightening them firmly, but not overtight, in the order in which you placed them.

The screwdriver can be magnetized by stroking it with a magnet (fridge magnet, etc.) enabling it to hold the screws and make assembly easier.

If a screw is tight going into a metal part, do not force it as you may shear the head off. Remove it and put a tiny smear of Vaseline, soap or light oil on the thread. That will lubricate it and make it easier to drive home.

During the course of this build, you will receive many pieces that you will assemble immediately – following the instructions in the corresponding stage – and other pieces that you should store safely to one side, for use in future assembly stages.

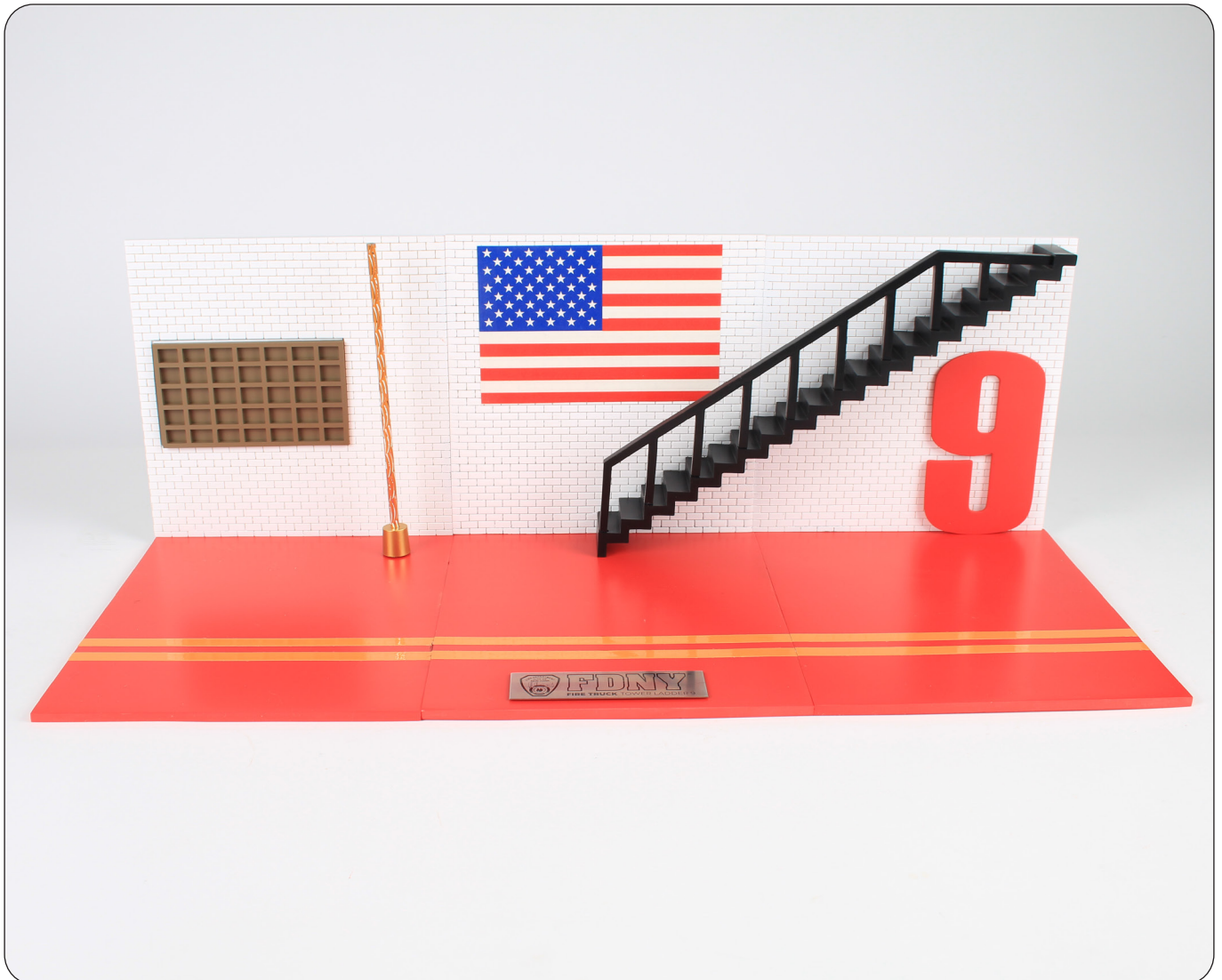
Left and Right! When building your fire truck, the left or right hand side refers to each side as you are sitting in the cab.



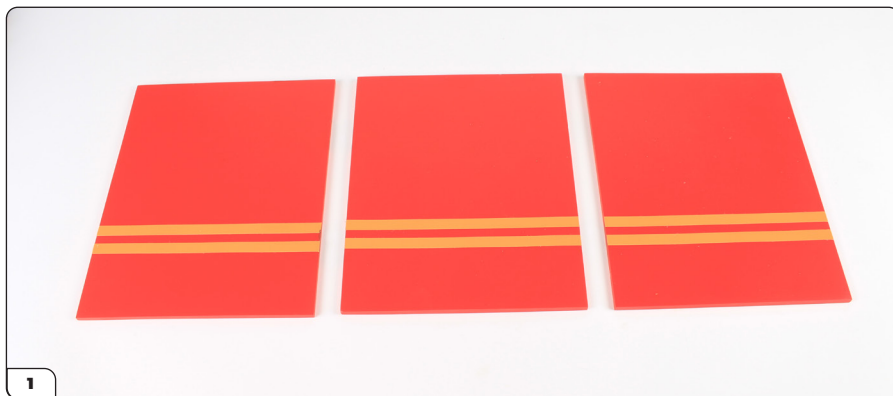
WARNING: Some parts are assembled using magnets. These magnets can cause serious injury if they are swallowed. Keep away from children. If you suspect a magnet has been swallowed, seek medical help straight away.

Assembling the Diorama

In Pack 11 you will assemble a diorama representing the Firehouse Station for Ladder 9 at 42 Great Jones Street, Manhattan. Ladder Company 9 and Engine Company 33 are stationed together in one of New York City's grandest small-scale civic buildings whose Beaux-Arts design was once considered as daring as its occupants. You can read more about it here: <https://www.agoramodels.com/a-short-history-of-engine-company-33-and-ladder-company-9/>



Assembling the Diorama



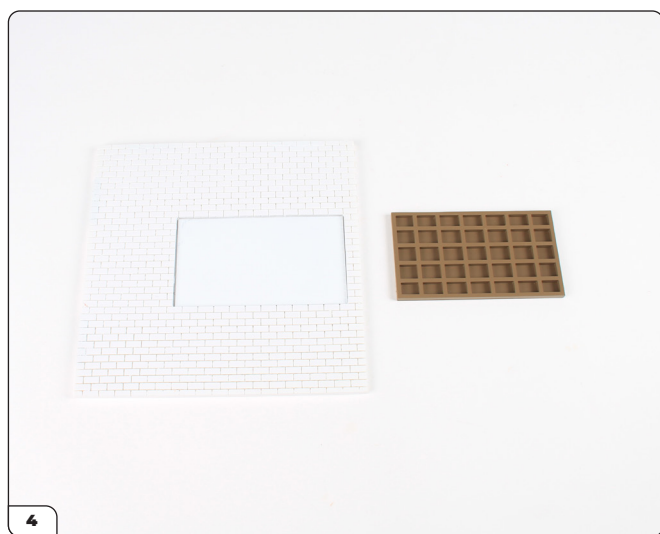
Lay the three floor sections on your work surface, with the yellow lines aligned.



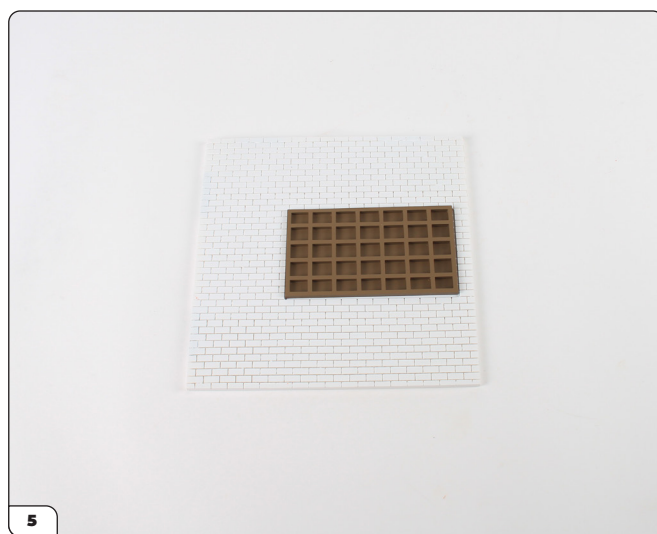
The sections are joined using the magnets along the joining edges.



Slide the sections together so that the top and bottom edges are flush.

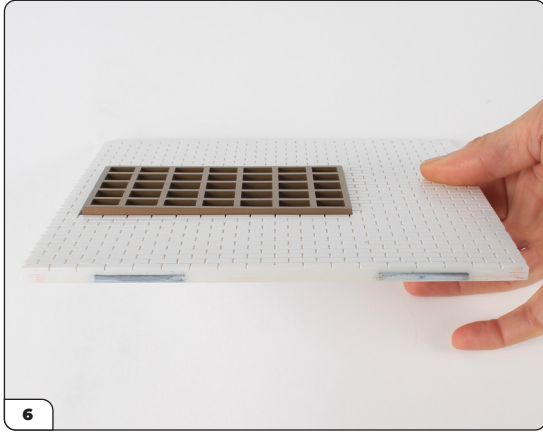


Take the white wall section with the rectangular recess, and the brown certificate frame.

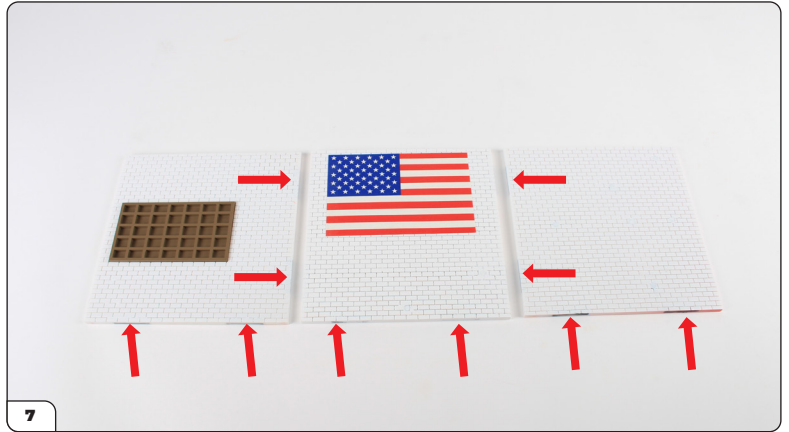


Press the frame firmly into the recess.

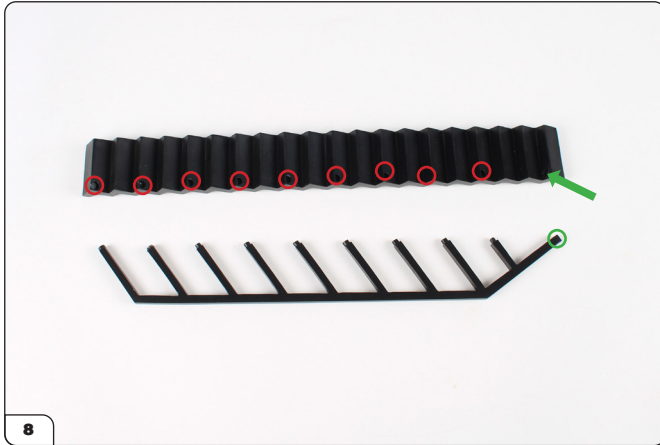
Assembling the Diorama



There are magnets along one edge. Position them along the bottom edge, so they can fix the wall section to the floor section.



Align the remaining two wall sections using the magnets along the joining edges to secure them together. Note that the central section has magnets on two sides. Check that the magnets along the bottom edge are facing the floor, as indicated by the arrows. Remove the backing from the flag and stick it to the centre wall panel as shown. **Note - once stuck, the flag cannot be removed, so make sure you have all the components, and the flag, in the correct position before sticking.**



Align the staircase with the handrail. The pegs on the handrail posts fit into corresponding holes on the stairs (circled). The top of the handrail (green circle) fits into the top step of the stairs (arrow).



This is how the stairs should look with the handrail in place.



Fit the wall sections to the floor sections using the magnets along the bottom edge of the wall sections (see next page).

Assembling the Diorama



The wall sections sit on top of the floor sections with their edges flush.

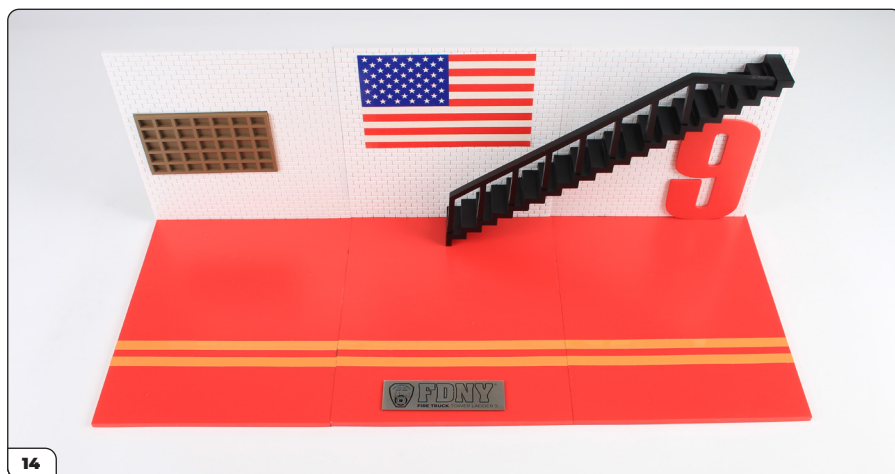


The stairs attach to the wall using the five magnets embedded in the wall sections.



The number '9' fixes to the wall using three magnets embedded in the right-hand wall section.

Assembling the Diorama



Fit the name plate by peeling the backing paper off the sticky pads, and then pressing it into place in your preferred position.

