
1967

SHELBY GT500

SUPER SNAKE

1:8 SCALE



Pack 11 | Build Instructions

Your Shelby GT500 Super Snake is a finely detailed model replicating every aspect of the original car. From the paint color to the smallest interior details, every piece is precisely reproduced.

In your eleventh model pack, you will assemble:

STAGE 83 : MAIN BODY SECTION

STAGE 84: UPPER & LOWER SIDE SCOOPS

**STAGE 85: HOOD, FRONT GRILLE,
HIGH-BEAM HEADLIGHTS**

STAGE 86: HOOD HINGES

**STAGE 87: CENTER LIGHT BRACKET,
HORNS, HOOD PINS, FOG LIGHT LENSES,
LED SYSTEM, WIRE HOLDERS**

**STAGE 88: TRUNK LID, LOCK
AND SHELBY EMBLEM**

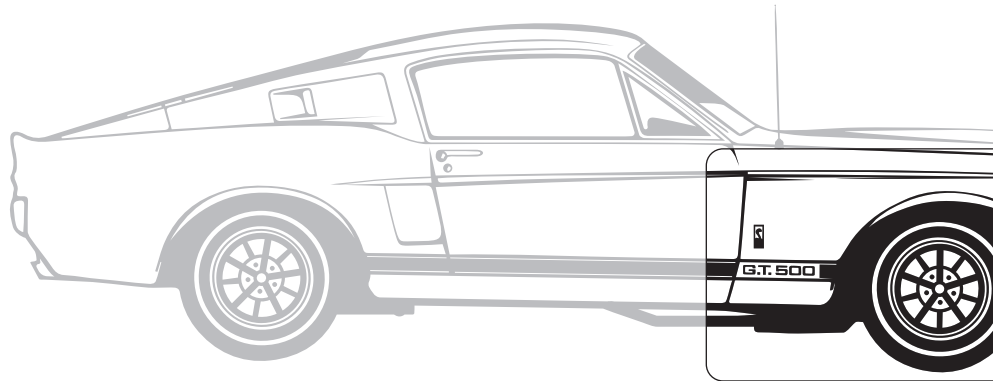
**STAGE 89: LOWER REAR
BODY SECTION, TRUNK HINGES
AND BRACKETS**

**STAGE 90: REAR LIGHTS,
LED WIRES, GAS CAP, GAS PIPE,
CABLE HOLDERS**

Stage 83: Main Body

As you work your way through Pack 11, your Super Snake bodywork will finally start to take shape.

Caution: please read our warning on the next page.



STAGE 83 PARTS LIST

Name	Quantity
Main Body Section	1
Screws TYPE MD06	5 [including 1 spare]

PLEASE NOTE

The screws are taped into the polystyrene packing. Throughout this pack, you may find it easier to drive the screws home by adding a drop of oil into the screw holes.



Stage 83: Main Body

STEP 1

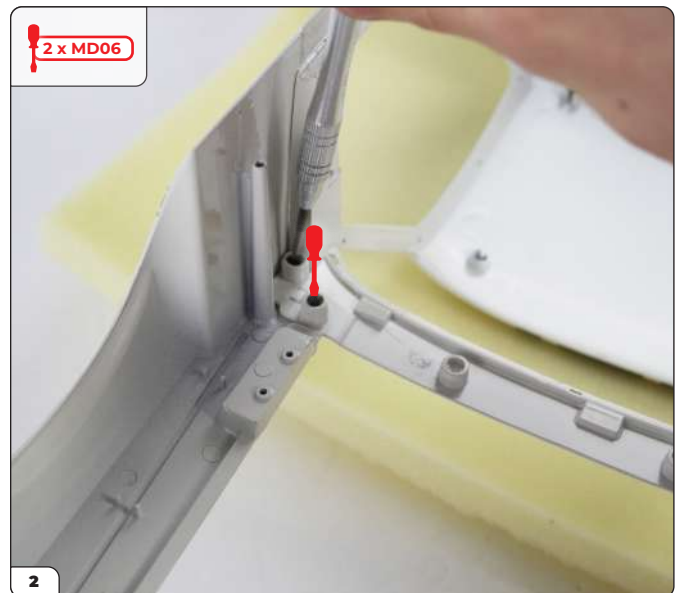
WARNING

Before unpacking and starting to assemble the next stage, check you have adequate protection for all parts during the build. Placing the body sections on a piece of foam or similar allows you to turn the foam into position rather than the parts. Moving your model into position while upside down may damage the paintwork. We have shot our images using a piece of protective packaging foam.

Please – do not be tempted to turn your model onto its roof without putting anti-scratch protection in place. You will be devastated if you scratch the paintwork.

ATTACH THE FRONT FENDERS TO THE MAIN BODY

When you're ready to begin, sit the Main Body section upside down on your work surface and align the front fenders from Stage 82. Fit the pieces together, taking care to ensure that each fender fits perfectly on the Main Body. Secure the parts together using 4 x TYPE MD06 screws.



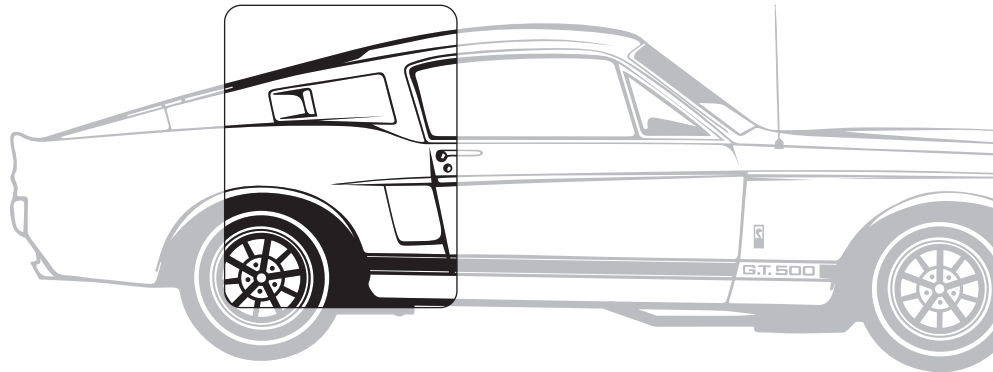
Stage 83: Main Body

Stage 83 complete!



Stage 84: Upper & Lower Side Scoops

You will now add the stylish side scoops to the main body of your model.



STAGE 84 PARTS LIST

Name	Quantity
Upper Right Side Scoop	1
Upper Left Side Scoop	1
Lower Right Side Scoop	1
Lower Left Side Scoop	1
Screws TYPE MP01	7 [including 1 spare]



Stage 84: Upper & Lower Side Scoops

STEP 1

ATTACH THE LOWER SIDE SCOOPS

Align the lugs on the Lower Left Side Scoop (marked L) with the holes on the main body as shown. Place into position before securing on the reverse side with a TYPE MP01 screw. It is easier to place the screws with the model upside down. Repeat on the opposite side with the Right Lower Side Scoop (marked R).

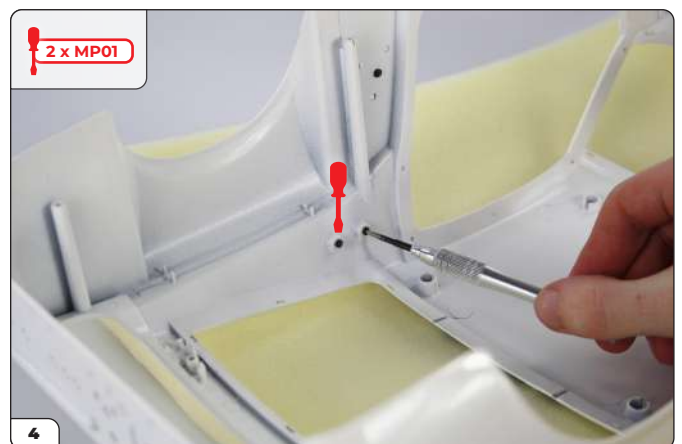
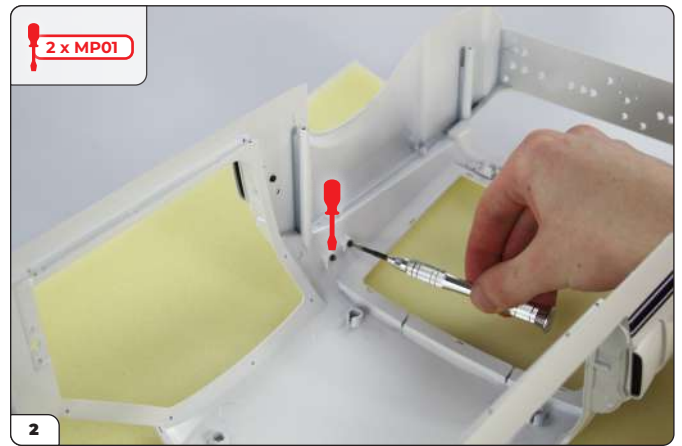


Stage 84: Upper & Lower Side Scoops

STEP 2

ATTACH THE UPPER SIDE SCOOPS

Align the lugs on the Upper Left Side Scoop (marked L) with the holes on the main body as shown. Place into position before securing on the reverse side with 2 x TYPE MP01 screws. Repeat on the opposite side with the Upper Right Side Scoop (marked R).



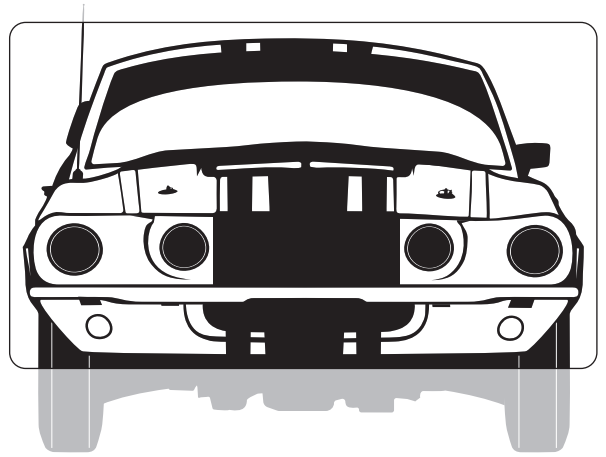
Stage 84: Upper & Lower Side Scoops

Stage 84 complete!



Stage 85: Hood, Front Grille, High-Beam Headlights

You will assemble the front grille, attach the high-beam headlights, and resume assembly of the front fascia.



STAGE 85 PARTS LIST

Name	Quantity
Front Grille	1
Front Grille Surround	1
Shelby Emblem	1
Left Headlight	1
Right Headlight	1
Hood	1
Screws TYPE MD02	3 [including 1 spare]

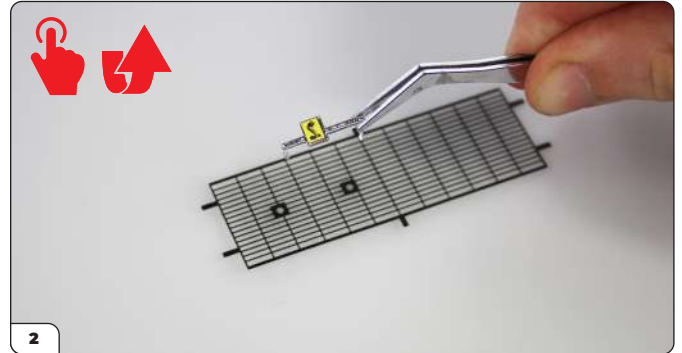
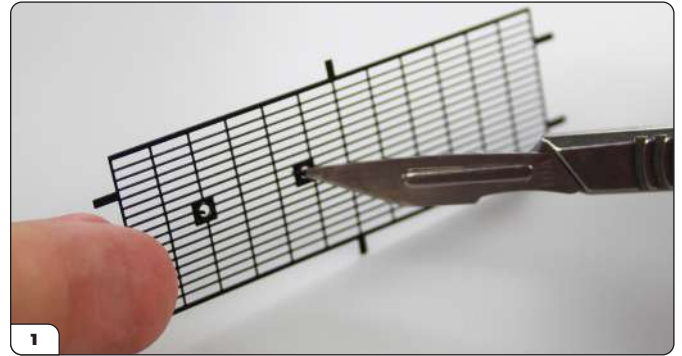


Stage 85: Hood, Front Grille, High-Beam Headlights

STEP 1

FIX THE EMBLEM TO THE FRONT GRILLE

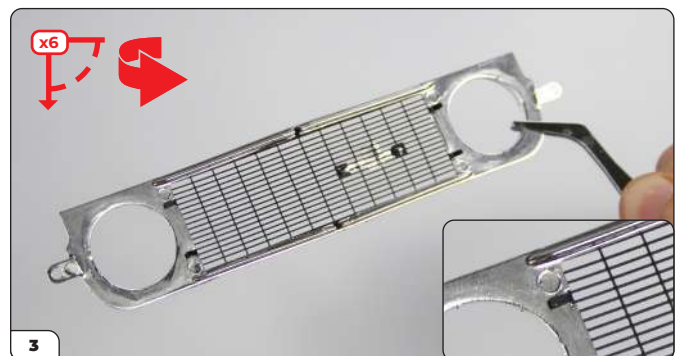
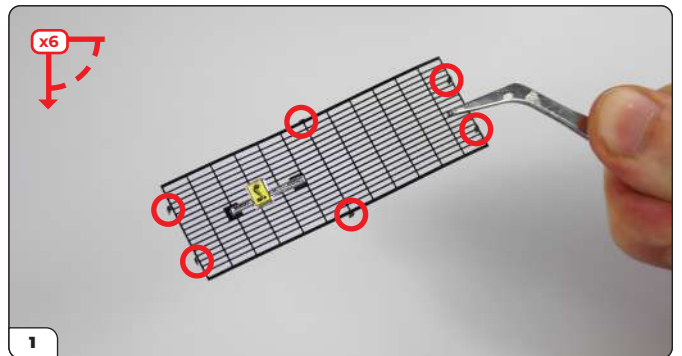
Take the front grille and check that the two small holes are on the left and very slightly closer to the top of the grille. Check photo 1 carefully. Now bend the small tabs inside the holes towards you with the tip of a knife blade. (Safety glasses are a good precaution in case the tip breaks.) Be careful not to bend the grille as it is quite delicate. Turn the grille over and align the Shelby Emblem with the two small holes and push the lugs through the holes. Again, be careful not to bend the grille. If necessary, squeeze the tabs to hold the Emblem securely in place.



STEP 2

ATTACH THE GRILLE TO THE GRILLE SURROUND

Gently bend the six side fasteners around the edge of the Grille towards the back. Place into position on the Front Grille Surround so that it sits comfortably within the recess. Check the Emblem is facing forwards on the left hand side. Holding the parts together, turn them over and press the fasteners flat to hold the Grille in place.

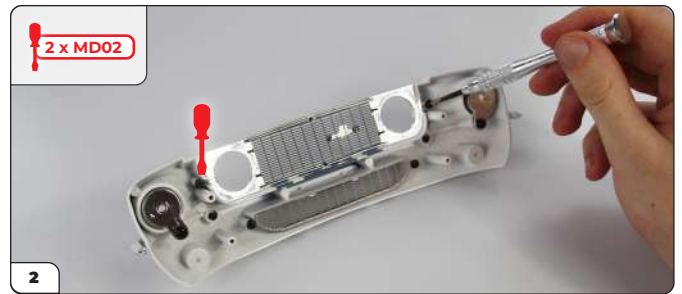
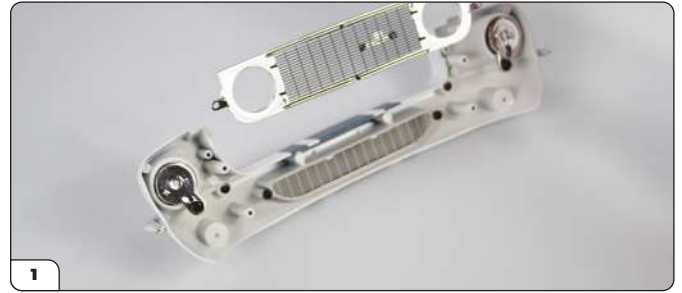


Stage 85: Hood, Front Grille, High-Beam Headlights

STEP 3

FIX THE GRILLE SURROUND TO THE FRONT FASCIA

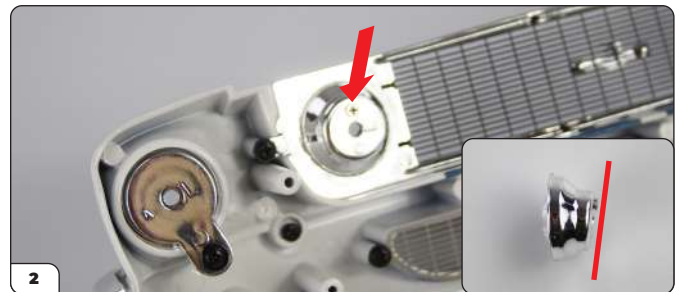
Align the Grille Surround with the Front Fascia from Stage 01. Fix into position using 2 x TYPE MD02 screws.



STEP 4

ATTACH THE HIGH-BEAM HEADLIGHTS

Turn the Front Fascia the right way up and take the Left Headlight (identified by the letter L). Note when you hold the Headlight that the back side is tilted slightly. Push the Headlight into position through the front of the Grille. The tilt should be as shown in picture 2 and the screw on the back should be at the top. Repeat with the Right Front Headlight, checking that the screw on the back is at the top. These headlights just click into place.



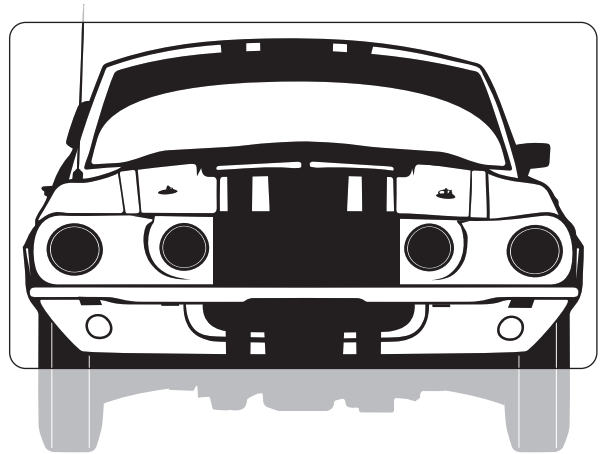
Stage 85: Hood, Front Grille, High-Beam Headlights

Stage 85 complete!



Stage 86: Hood Hinges

In the next stage you will attach the hood to the main body.



STAGE 86 PARTS LIST

Name	Quantity
Hood Hinge Brackets	2
Right Hinge Support	1
Left Hinge Support	1
Left Hinge	1
Right Hinge	1
Hinge Springs	2
Screws TYPE MD10	3 [including 1 spare]
Screws TYPE MD09	3 [including 1 spare]
Screws TYPE MD12	5 [including 1 spare]
Screws TYPE MP03	3 [including 1 spare]
Screws TYPE MP10	5 [including 1 spare]



Stage 86: Hood Hinges

STEP 1

CHECK THAT YOU HAVE YOUR ANTI-SCRATCH PROTECTION IN PLACE ON YOUR WORK SURFACE BEFORE PLACING THE HOOD UPSIDE DOWN!

ASSEMBLE AND FIT THE LEFT AND RIGHT HOOD HINGES

Take the hood and place it upside down on your protected surface. Align one of the Hood Hinge Brackets with the Hood as shown. Fix in place using a TYPE MD10 screw. Fit the Left Hinge to the Left Hinge Support, securing the parts together with a TYPE MP10 screw. Orient the Left Hinge with the Hinge Bracket as shown, placing the tenon in the groove on the bracket, and secure into position with a TYPE MP10 screw.



Don't over tighten the MP10 screws as these move when the hood is lifted.



Stage 86: Hood Hinges

STEP 1

CONTINUED...

Secure the other end of the Hinge to the Hood with a TYPE MD09 screw.



Again, be careful not to over tighten as this part needs to move.

Loop one end of a Hinge Spring over the groove on the Hinge Support as shown. Then hook the other end of the Spring over the tenon on the Hinge Support. It might be easier to grip the Spring with pliers so that you can pull it into position. Secure the Spring in place with a TYPE MP03 screw.

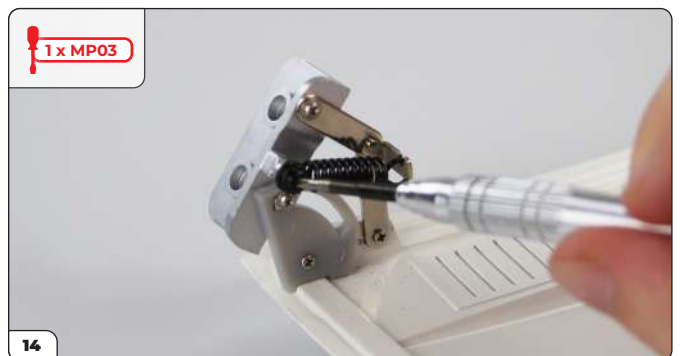
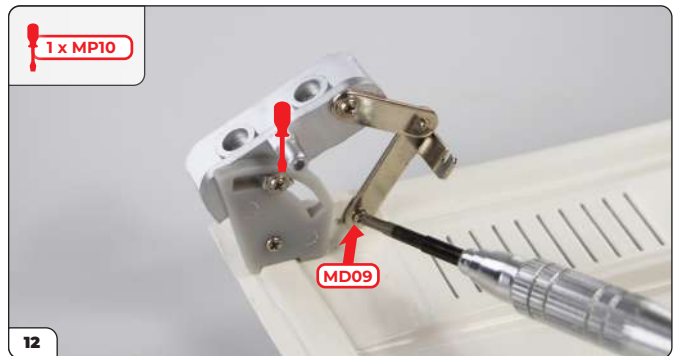
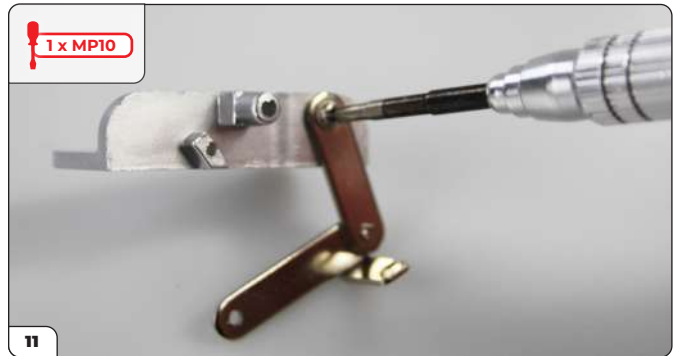
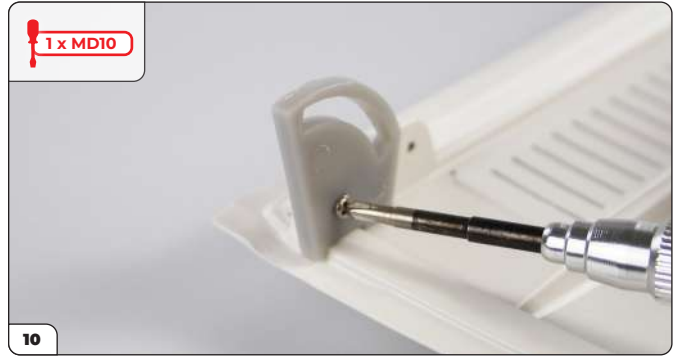


Stage 86: Hood Hinges

STEP 1

CONTINUED...

Repeat these steps to attach the Right Hinge to the Hood.



Stage 86: Hood Hinges

STEP 2

CHECK THAT YOU HAVE YOUR ANTI-SCRATCH PROTECTION IN PLACE ON YOUR WORK SURFACE!

ATTACH THE HOOD TO THE MAIN BODY

Place the Main Body of your Super Snake upside down on your protected work surface. Introduce the Hood from underneath the front section at a diagonal angle and then square it up until the hinges are aligned with the corners of the engine compartment. Position the Hinge Supports over the anchor points and secure them, one at a time with 2 x TYPE MD12 screws on each side. Turn your model the right way up and check that the hood opens and closes freely.



ADVICE FROM THE EXPERTS
What to do if your hood doesn't line up between the fenders.

If your hood seems offset to the left or right, you need to adjust the fenders a little. Slightly loosen the 4 x MD06 screws holding the fenders to the main body. See stage 83, Step 1, photos 2 & 3.

Then slightly loosen the 4 x MD06 screws holding the front fenders to the chassis front plate. See stage 81, step 2, photo 1 and stage 82, step 1, photos 1 & 2.

Now push the front of the fenders left or right until the hood is perfectly aligned. Re-tighten all the screws while holding the fenders in the correct position. Your hood should now fit nicely.



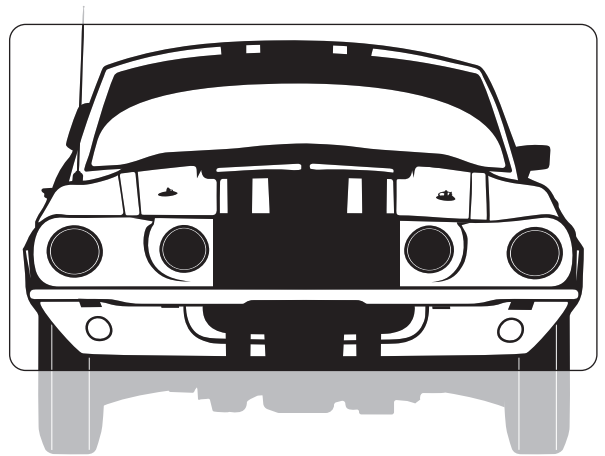
Stage 86: Hood Hinges

Stage 86 complete!



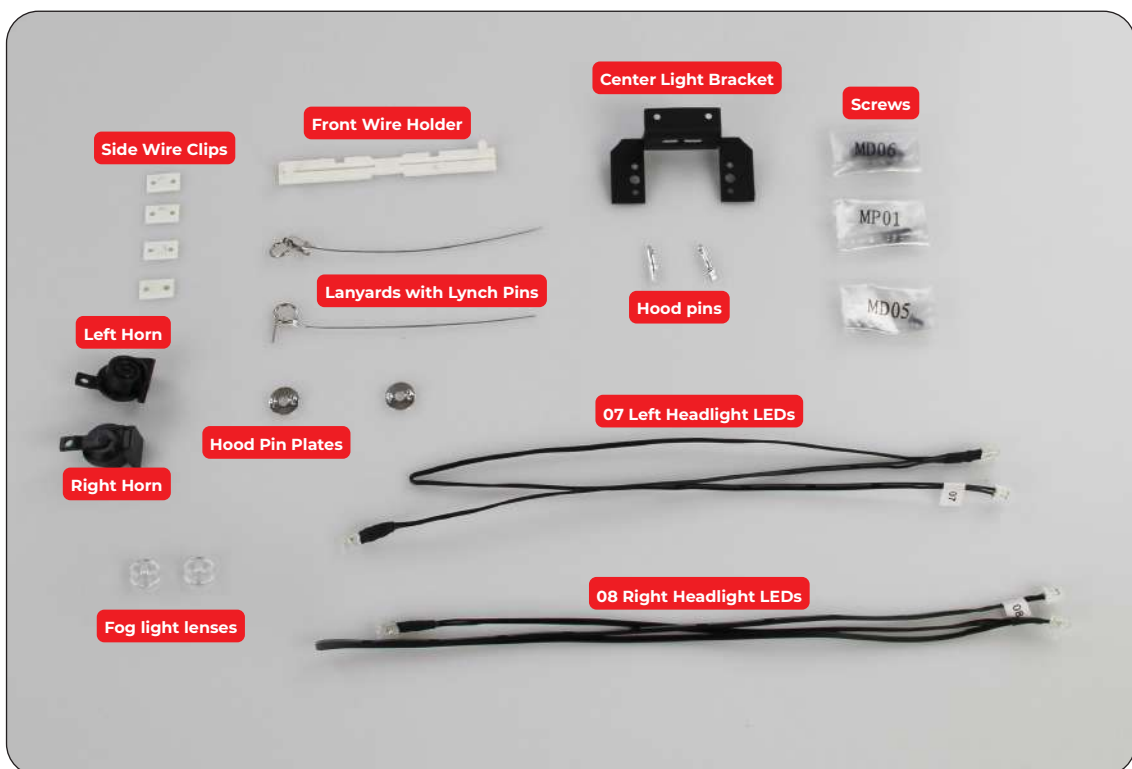
Stage 87: Center Light Bracket, Horns, Hood Pins, Fog Light Lenses, LED System, Wire Holders

You will now add more details to the front section and wire up the front lights.



STAGE 87 PARTS LIST

Name	Quantity
Center Light Bracket	1
Left Horn	1
Right Horn	1
Hood Pin Plates	2
Hood pins	2
Lanyards with Lynch Pins	2
07 Left Headlight LEDs	1
08 Right Headlight LEDs	1
Side Wire Clips	4
Front Wire Holder	1
Fog light lenses	2
Screws TYPE MD06	5 [including 1 spare]
Screws TYPE MD06	5 [including 1 spare]
Screws TYPE MP01	3 [including 1 spare]

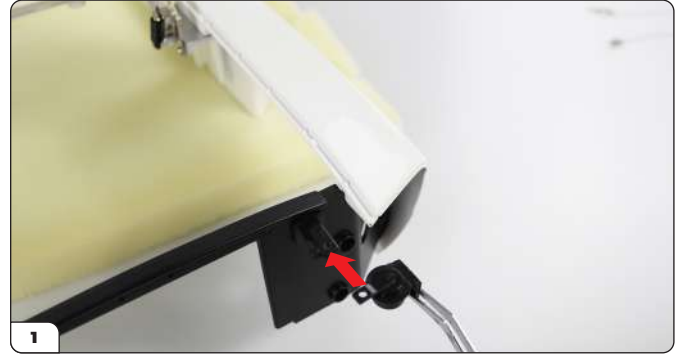


Stage 87: Center Light Bracket, Horns, Hood Pins, Fog Light Lenses, LED System, Wire Holders

STEP 1

FIT THE HORNS

With your model the right way up on your protected work surface, orient the Left Horn on the Chassis Front Panel as shown. There is only one way to fit the Horn. Secure in place with a TYPE MP01 screw. Fit the Right Horn in the same way on the opposite side.



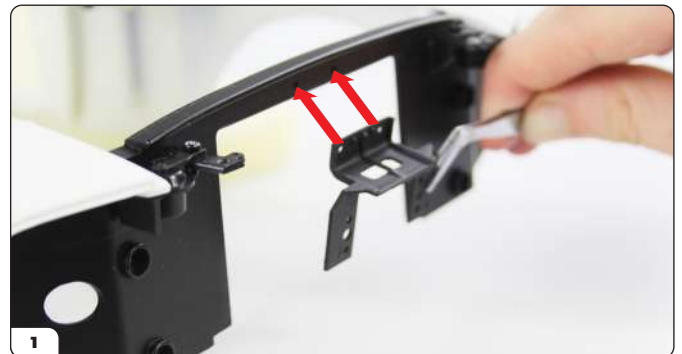
STEP 2

FIT THE CENTER LIGHT BRACKET

Position the Center Light Bracket from the outside of the Chassis Front Panel as shown. Secure in place with 2 x MD05 screws.

About the Center Light Bracket:

The GT500 was originally designed with the Headlights in the center of the grille. For 1967, the headlights were moved to the side to comply with state laws, but the center bracket remained. This detail maintains the original and unique structure of the 1967 Super Snake model.



Stage 87: Center Light Bracket, Horns, Hood Pins, Fog Light Lenses, LED System, Wire Holders

STEP 3

FIT THE HOOD PINS

Push the D shaped end of the Hood Pins as shown. Check that the Hood closes over the pins smoothly. Re-check the expert tip on stage 86 if they aren't properly aligned.

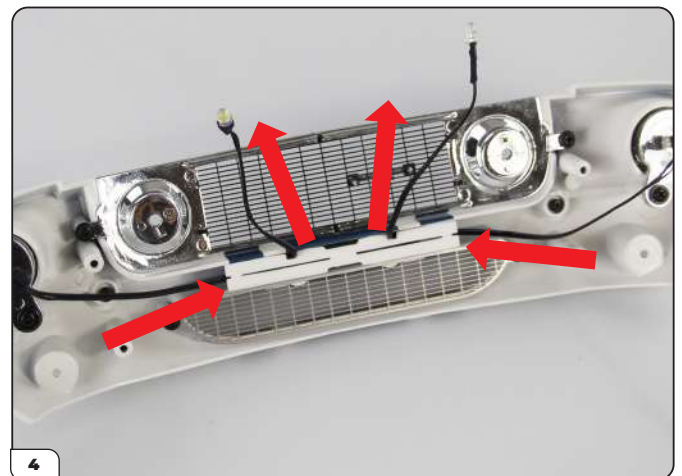
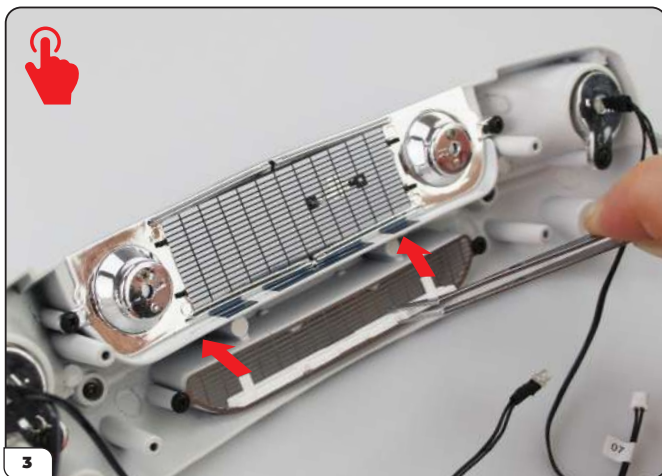


Stage 87: Center Light Bracket, Horns, Hood Pins, Fog Light Lenses, LED System, Wire Holders

STEP 4

ATTACH THE LEDs

Take hold of the Left Headlight LED (07) and carefully push the bulb into the hole in the Left Headlight. Push gently, as far as it will go. Repeat with the Right LED (08) in the Right Headlight. Take the Front Wire Holder, ready to push it into place as shown (the lugs on the Wire Holder sit on the outside of the Pegs between the grilles, holding it in place). Route the cables between the lower grille and upper grille, making sure LED 07 goes to the left High Beam headlight and LED 08 goes to the right. Use a small drop of white PVA glue to secure the lenses if they are loose. The PVA glue dries clear and will be invisible once it dries. Push the Front Wire Holder into position to hold the cables in place, leaving the LEDs routed through the grooves as shown in picture 4. Gently take each LED and push it into the Left and Right High-Beam Headlights.

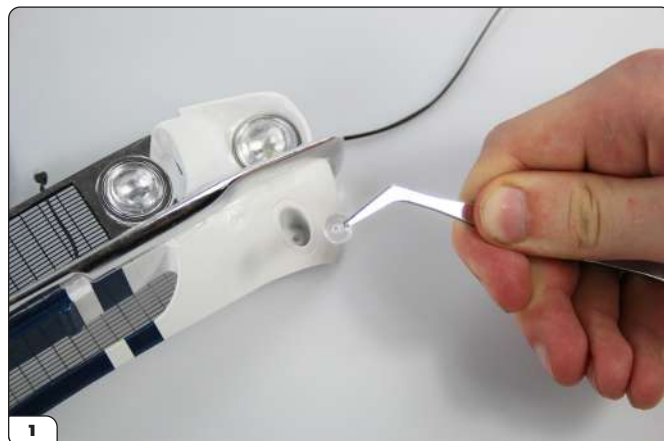


Stage 87: Center Light Bracket, Horns, Hood Pins, Fog Light Lenses, LED System, Wire Holders

STEP 5

ATTACH THE FOG LIGHT LENSES

Push the Fog Lights into the recesses on the front fascia as shown. The shaped pins anchor the lenses in place. Use a small drop of white PVA glue to secure the lenses if they are loose. The PVA glue dries clear and will be invisible once it dries.



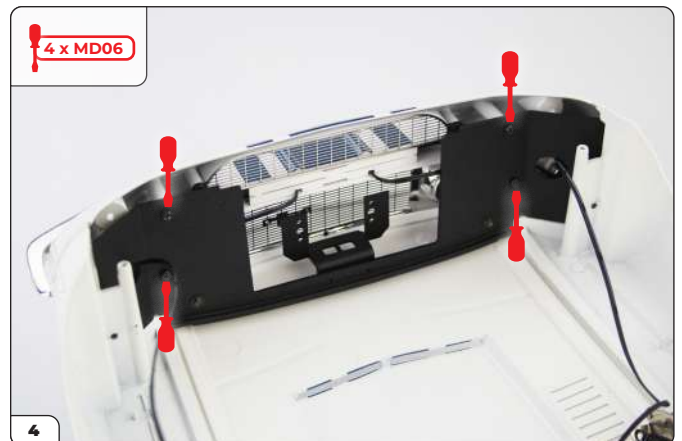
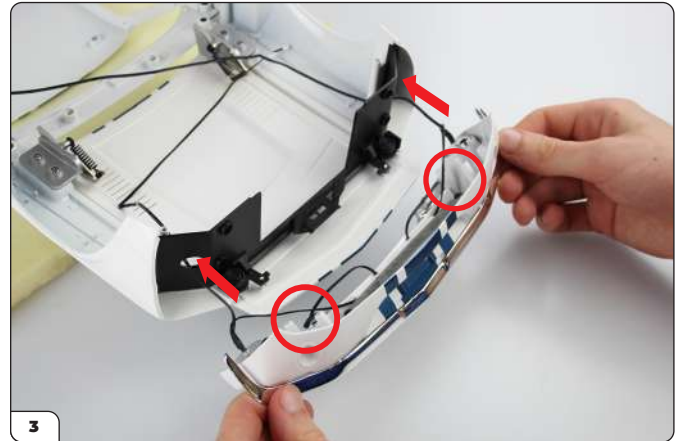
Stage 87: Center Light Bracket, Horns, Hood Pins, Fog Light Lenses, LED System, Wire Holders

STEP 6

ATTACH THE FRONT FASCIA TO THE CHASSIS FRONT PANEL

Before you offer up the front fascia to the front chassis panel, gently flatten the LED cables projecting from the High-Beam headlights. This will allow the parts to sit flush.

Now, position the Front Fascia as shown in picture 3 with the lower part facing up. Pass the ends of the headlight cables through the holes in the Chassis Front Panel and align the fixing points (circled). Push together and secure from the inside using 4 x TYPE MD06 screws.

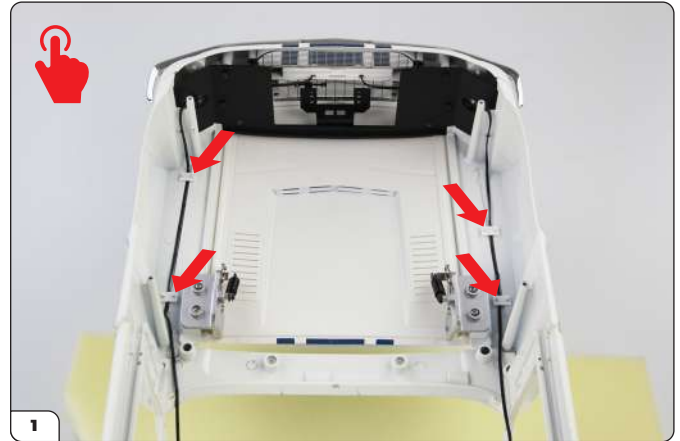


Stage 87: Center Light Bracket, Horns, Hood Pins, Fog Light Lenses, LED System, Wire Holders

STEP 7

SECURE THE CABLES IN PLACE WITH THE WIRE CLIPS

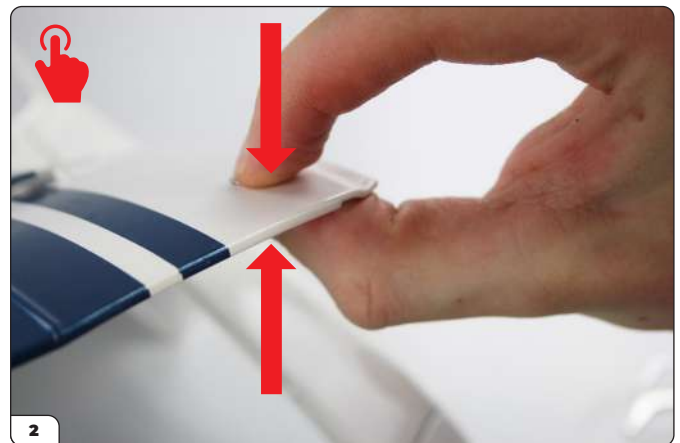
Route the cables through the grooves on each side of the body. Secure them in place with the Side Wire Clips, pushing them in firmly.



STEP 8

ATTACH THE HOOD PIN PLATES

Take the Hood Pin Plates and press them firmly into the recesses on the Hood. The correct position is determined by the slight angle of each plate. Close the hood and check that the Hood Pins protrude correctly through the plates.



Stage 87: Center Light Bracket, Horns, Hood Pins, Fog Light Lenses, LED System, Wire Holders

STEP 9

ATTACH THE LANYARDS

Open the Hood again, and insert the free end of the lanyard around the bracket next to the Hood Pin. With a pair of pliers, hook the end of each cable to keep it in position. Repeat with the remaining lanyard on the right hand side. Close the Hood again and insert the "Click" pin through the hole in the Hood Pin. The "Click" Pins are held in place by hooking the circular swivel end over the end of the pin.



ADVICE FROM THE EXPERTS

There are two things to check if you are struggling to insert the Click Pins in through the Hood Pins. Firstly, check that the holes are clear of any flash or excess plating. It's easier to do this with the Hood Pin removed. You can clear out the hole with a small 1mm drill bit.

Secondly, check that there is no burr on the back of the pin. If there is, this can be carefully trimmed flat using a craft knife with a new blade.

Finally, check that the hood is pushed down fully.



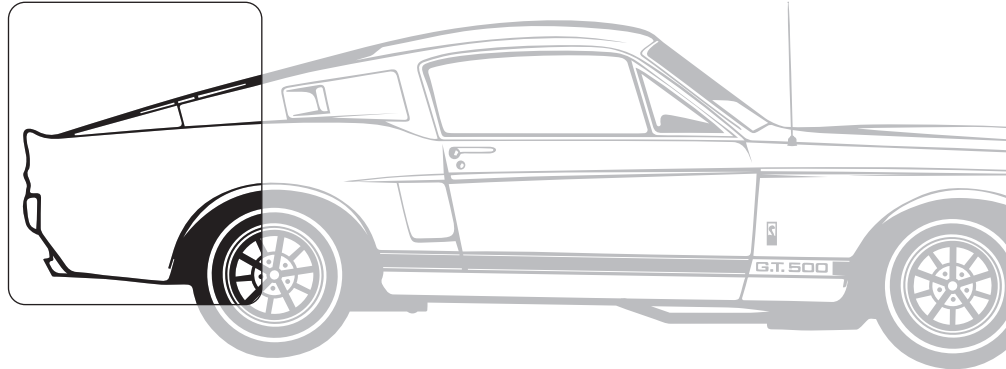
Stage 87: Center Light Bracket, Horns, Hood Pins, Fog Light Lenses, LED System, Wire Holders

Stage 87 complete!



Stage 88: Trunk Lid, Lock And Shelby Emblem

In this stage you will add the lock and Shelby emblem to the trunk lid.



STAGE 88 PARTS LIST

Name	Quantity
Trunk Lid	1
Trunk Lock	1
Shelby Emblem	1
Screws TYPE MD11	3 [including 1 spare]

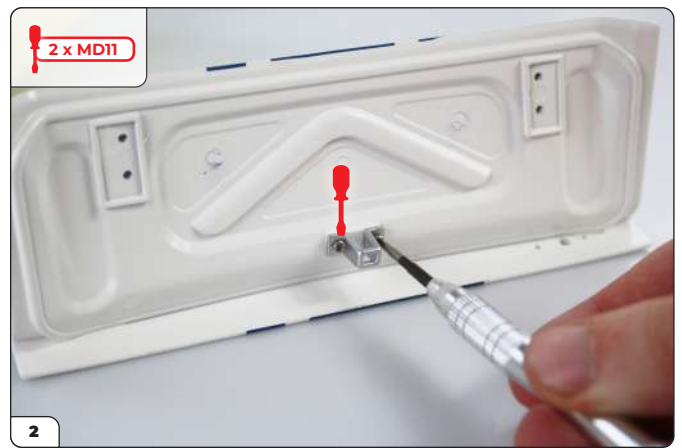


Stage 88: Trunk Lid, Lock And Shelby Emblem

STEP 1

ATTACH THE TRUNK LOCK

Take the Trunk Lock and align it with the Trunk Lid as shown. Secure in place with 2 x TYPE MD11 screws.



STEP 2

ATTACH THE SHELBY EMBLEM

Mount the Shelby Emblem on the left side of the trunk by pushing it into place.



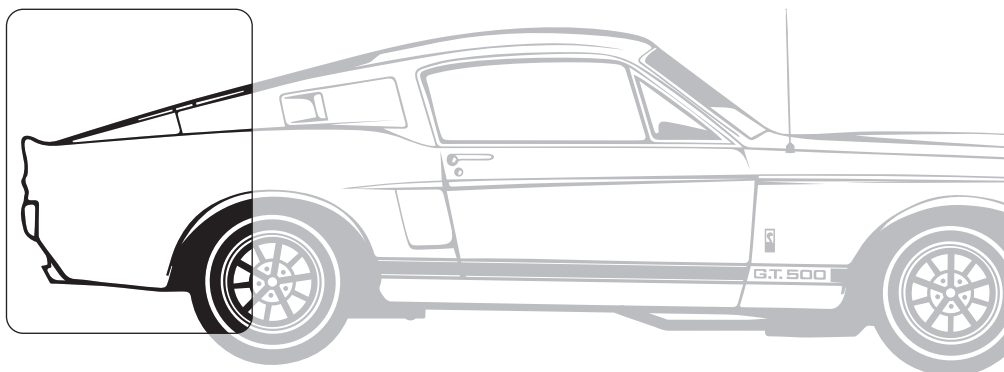
Stage 88: Trunk Lid, Lock And Shelby Emblem

Stage 88 complete!



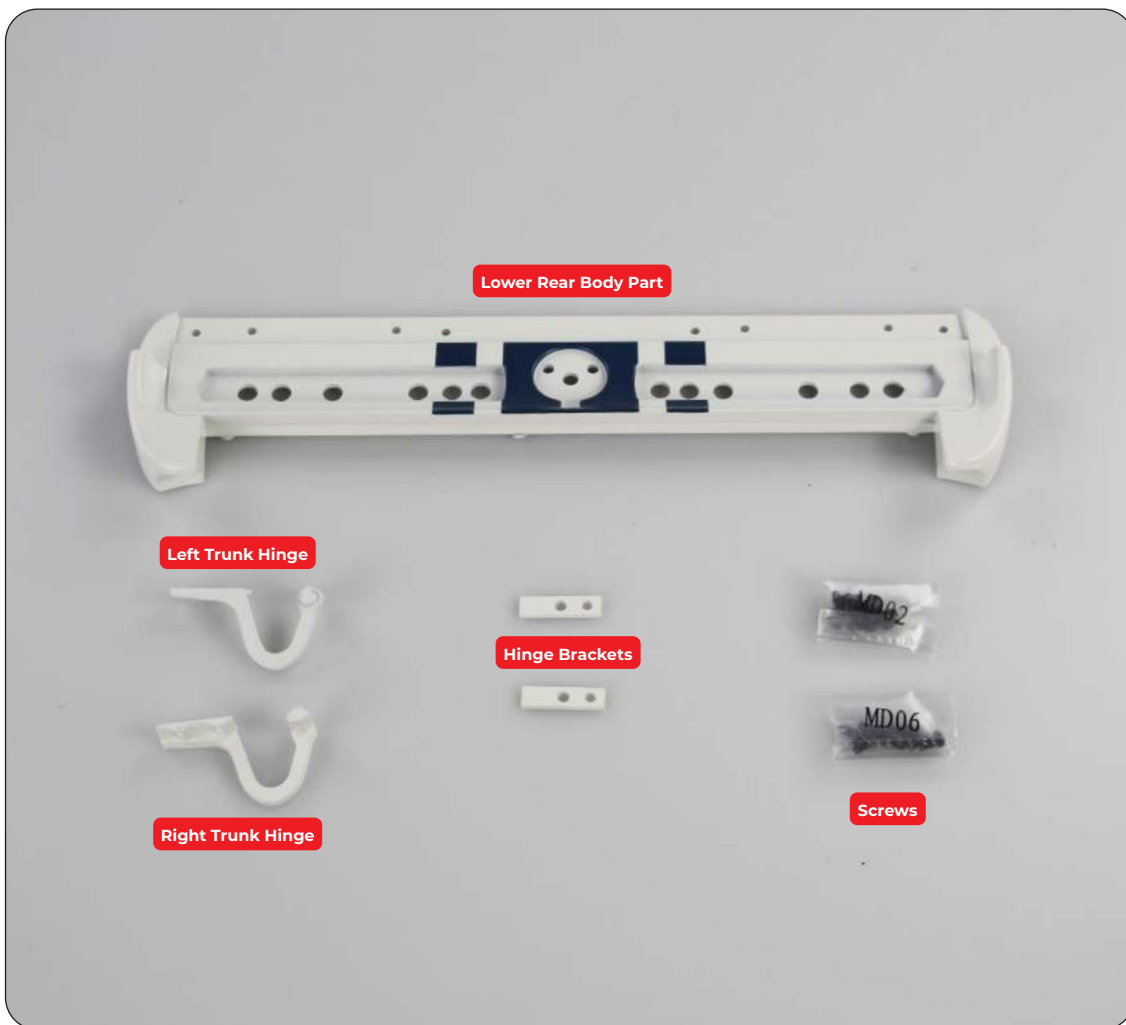
Stage 89: Lower Rear Body Section, Trunk Hinges and Brackets

Your Super Snake body will continue to take shape as you add the lower rear body section and trunk.



STAGE 89 PARTS LIST

Name	Quantity
Lower Rear Body Part	1
Left Trunk Hinge	1
Right Trunk Hinge	1
Hinge Brackets	2
Screws TYPE MD06	7 [including 1 spare]
Screws TYPE MD02	7 [including 1 spare]



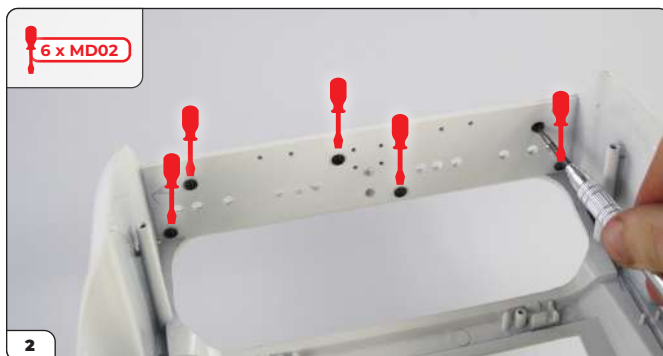
Stage 89: Lower Rear Body Section, Trunk Hinges and Brackets

STEP 1

Please don't be tempted to continue without putting some anti-scratch protection on your work surface. The paintwork will get scratched when the model is turned upside down!

ATTACH THE LOWER REAR BODY PART

Start with the model upside down and align the Lower Rear Body Part as shown. Fit the tenons into the corresponding holes and check it is squarely positioned. Secure the parts together using 6 x TYPE MD02 screws. Fix each screw loosely and check the positioning of the panel before tightening them all.



STEP 2

ATTACH THE TRUNK HINGES TO THE TRUNK BEFORE FIXING TO THE MAIN BODY

With the Trunk upside down on your work surface, align the Right Trunk Hinge as shown. Secure it in place with 2 x TYPE MD06 screws. Repeat on the other side with the Left Hinge.



Stage 89: Lower Rear Body Section, Trunk Hinges and Brackets

STEP 3

Now introduce the trunk to the main body, keeping the trunk lid in the open position as shown. The Hinges must be positioned in the fixings on each side of the body. Position the Hinge Brackets over each fixing, making sure that the hole in the bracket is resting on the tenon of the bodywork. Fix the Brackets using an MD06 screw on each side.



Stage 89: Lower Rear Body Section, Trunk Hinges and Brackets

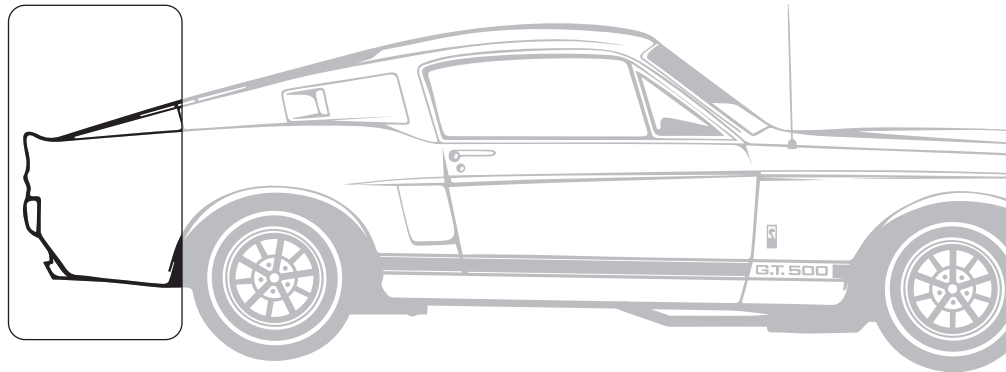


Stage 89 complete!



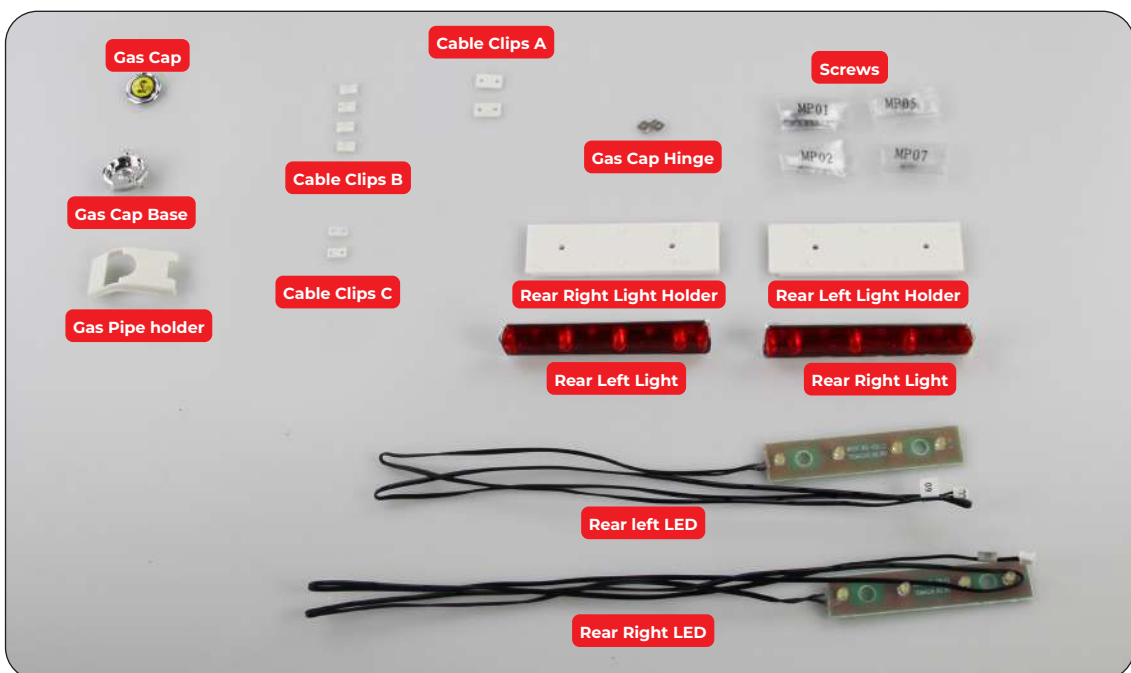
Stage 90: Rear Lights, LED Wires, Gas Cap, Gas Pipe, Cable Holders

In stage 90 you will attach the rear lights and gas cap.



STAGE 90 PARTS LIST

Name	Quantity
Gas Cap	1
Gas Cap Base	1
Gas Cap Hinge	1
Gas Pipe holder	1
Rear Left Light	1
Rear Right Light	1
Rear Left Light Holder	1
Rear Right Light Holder	1
Rear left LED	1
Rear Right LED	1
Cable Clips A	2
Cable Clips B	4
Cable Clips C	2
Screws TYPE MP01	5 [including 1 spare]
Screws TYPE MP02	3 [including 1 spare]
Screws TYPE MP05	2 [including 1 spare]
Screws TYPE MP07	3 [including 1 spare]

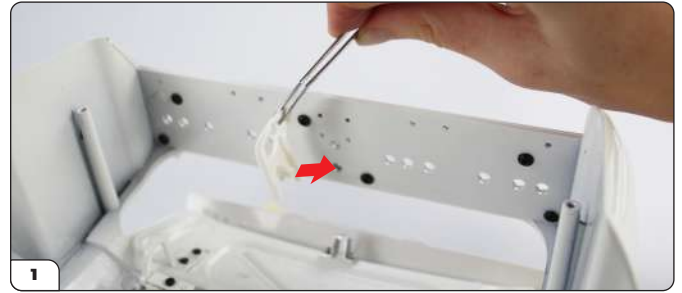


Stage 90: Rear Lights, LED Wires, Gas Cap, Gas Pipe, Cable Holders

STEP 1

FIT THE GAS PIPE HOLDER

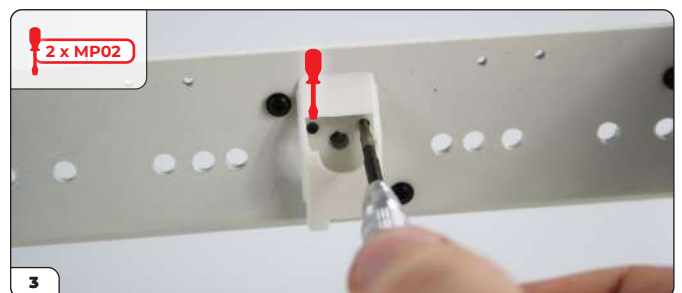
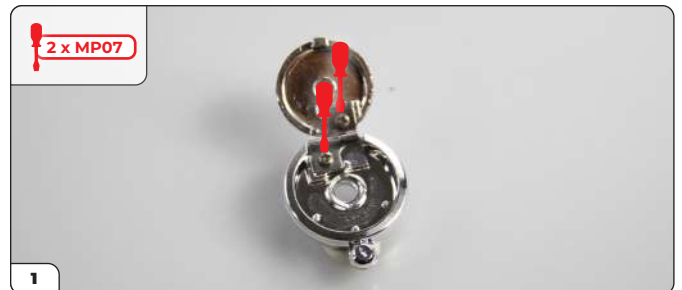
Again, check you have a protective layer on your work surface before turning the main body upside down. Align the Gas Pipe Holder with the three small holes on the inside panel. Push into place and secure from the outside with an MP05 screw.



STEP 2

ASSEMBLE AND FIT THE GAS CAP

Join the Gas Gap to the Gas Cap Base using the Gas cap hinge. The Hinge fixes the two parts in place using 2 x MP07 screws. Close the Gas cap and position it at the rear of the body. There is only one correct way to fix this part. Secure in place from the inside with 2 x MP02 screws.

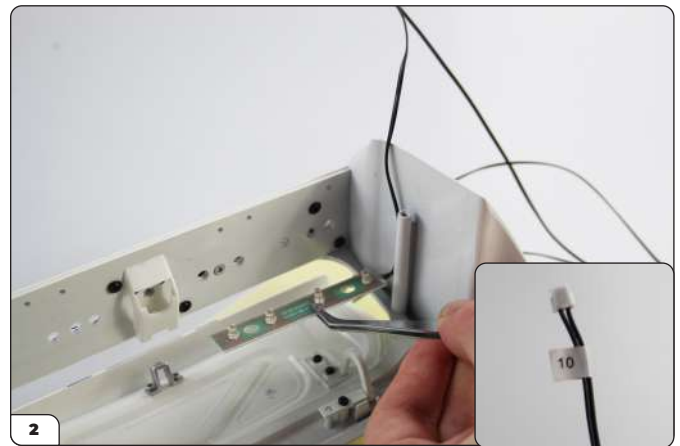


Stage 90: Rear Lights, LED Wires, Gas Cap, Gas Pipe, Cable Holders

STEP 3

FIT THE REAR LIGHTS

Align the Rear Right Light (identified by the letter R) with the rear panel of the main body. Press into place. Then take the Rear Right LED (No.10) and insert the 4 LEDs in the rear body panel. Press to nest the LEDs and the tenons in the bodywork. Bend the cable so that the LED circuit board lays flat. Route the cable as shown. Secure the LEDs by positioning the Right Rear Light Holder as shown, securing it place with 2 x TYPE MP01 screws (Take care not to over tighten these screws as you can strip the thread). There is only one correct position to mount the Holder.

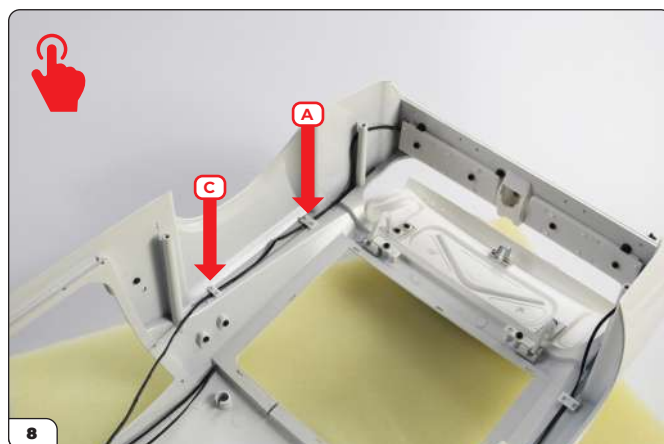
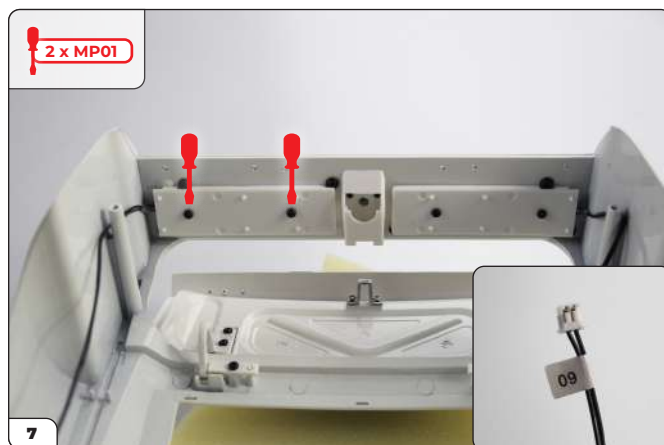
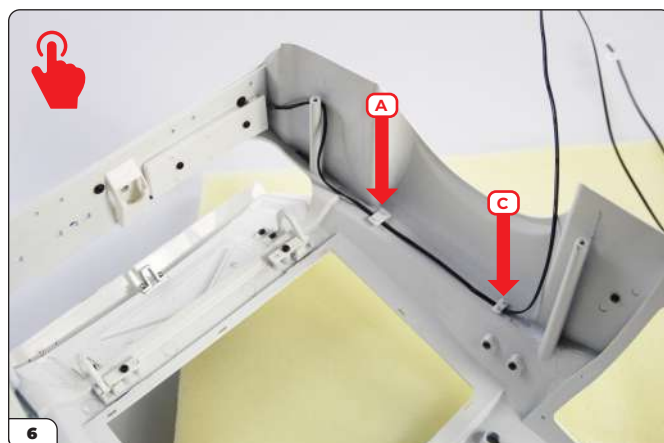


Stage 90: Rear Lights, LED Wires, Gas Cap, Gas Pipe, Cable Holders

STEP 3

CONTINUED...

Route the cables along the side of the body and secure in place with cable clips as shown. Repeat on the other side with the Left Rear Light, LED (No. 09) and Left Light Holder.

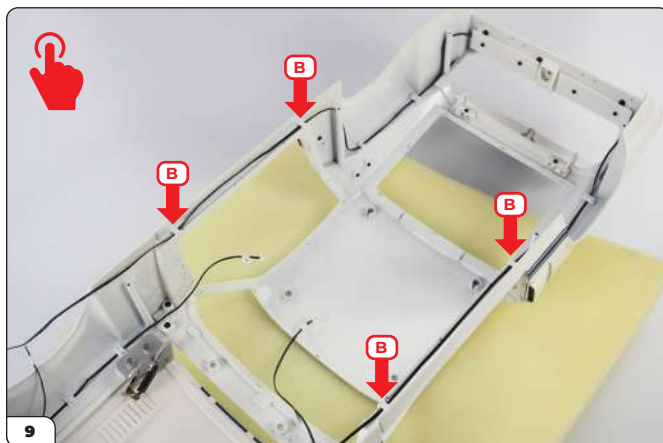


Stage 90: Rear Lights, LED Wires, Gas Cap, Gas Pipe, Cable Holders

STEP 3

CONTINUED...

Route the cables around the edge of the body, securing the cable in place with Cable Clips as shown.



Stage 90 complete!

