



Pack 10

BUILD INSTRUCTIONS

STAGE 81: FITTING THE LEFT DOOR HANDLE

STAGE 82: FITTING THE LEFT DOOR HINGE

STAGE 83: DETAILING THE LEFT DOOR INTERIOR PANEL

STAGE 84: ASSEMBLING THE LEFT WINDOW AND DOOR

STAGE 85: PREPARING THE MAIN BODY

General Motors Trademarks used under license by Premium & Collectibles Trading Co. Ltd on behalf of Agora Models.

AGORA
MODELS®

Advice from the experts

Spare screws are included with each part. Occasionally, you may be instructed to keep spare or unused screws for a later stage. Keep these spares in a safe place and label them correctly.

Please make sure you don't mix up the screws. They look quite similar, but the threads do vary slightly. Using the wrong screws may damage the parts.

When securing parts together using multiple screws, fit each screw loosely to ensure all the parts are correctly aligned before gently tightening them firmly, but not overtight, in the order in which you placed them.

The screwdriver can be magnetized by stroking it with a magnet (fridge magnet, etc.) enabling it to hold the screws and make assembly easier.

If a screw is tight going into a metal part, do not force it as you may shear the head off. Remove it and put a tiny smear of Vaseline, soap or light oil on the thread. That will lubricate it and make it easier to drive home.

During the course of this build, you will receive many pieces that you will assemble immediately – following the instructions in the corresponding stage – and other pieces that you should store safely to one side, for use in future assembly stages.

Left and Right! When building your Corvette, the left- or right-hand side refers to that side as if you are sitting in the car.



WARNING: Some parts are assembled using magnets. These magnets can cause serious injury if they are swallowed. Keep away from children. If you suspect a magnet has been swallowed, seek medical help straight away.

Stage 81: Fitting the Left Door Handle

In this stage you'll fit the left door handle in place.

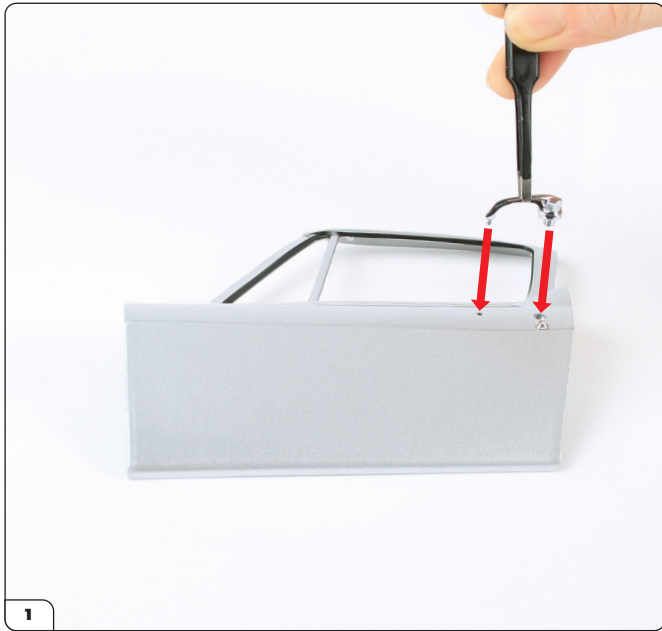


STAGE 81 PARTS LIST

| Name |
|------------------|
| Left door |
| Left door handle |
| FM screws x2 |



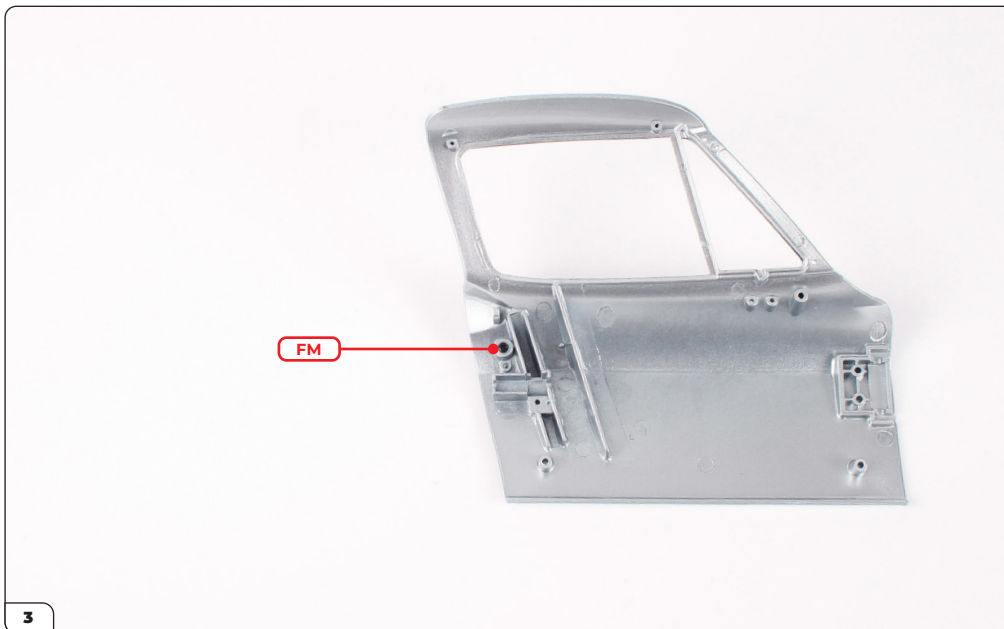
Stage 81: Fitting the Left Door Handle



Align the left door handle with the left door as shown.



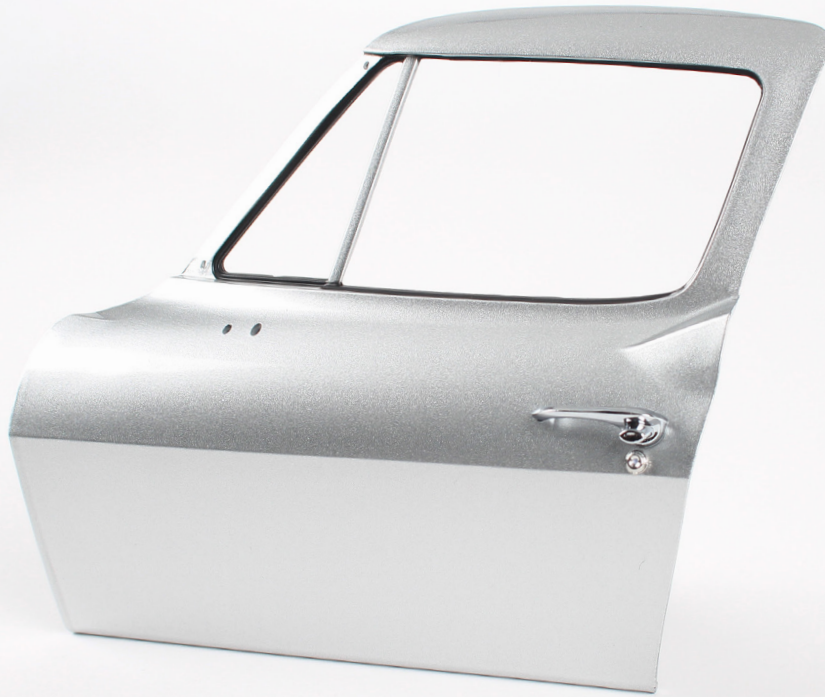
Fit the handle in place.



Secure from the other side with an FM screw.

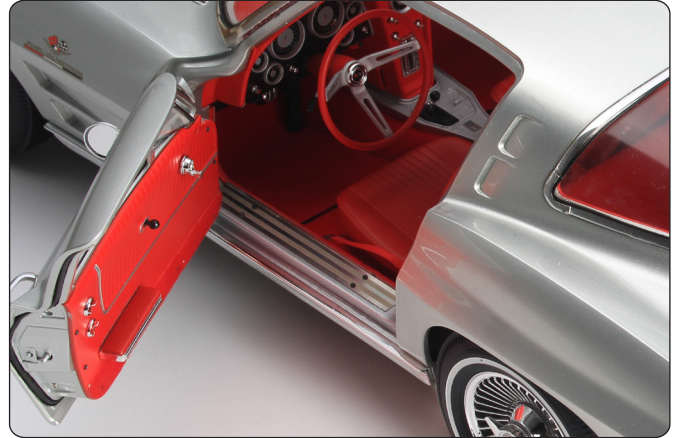
Stage 81: Fitting the Left Door Handle

STAGE COMPLETE



Stage 82: Fitting the Left Door Hinge

In this stage you'll fit the left door hinge mount and secure it using the hinge plate. The left door inside panel can be kept safely until it is needed in the next stage.

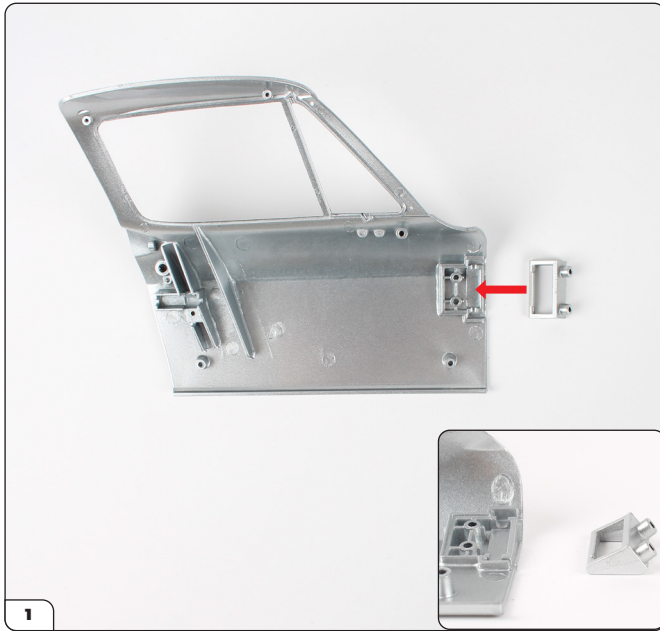


STAGE 82 PARTS LIST

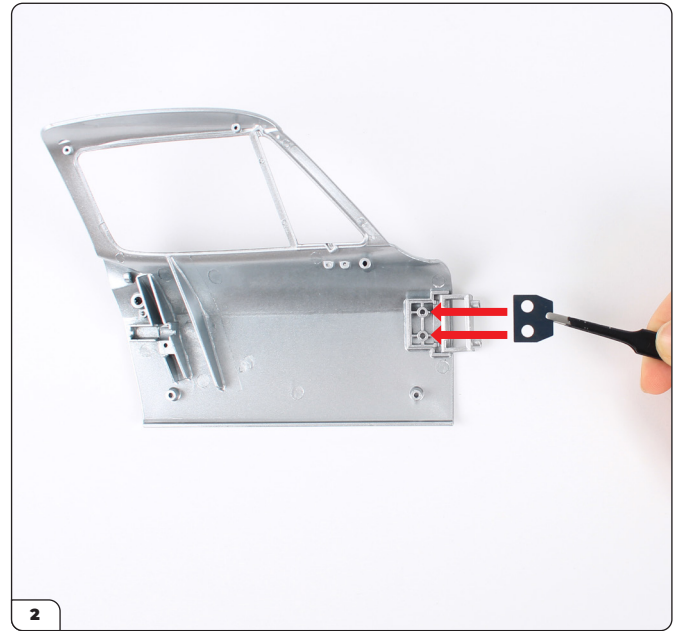
| Name |
|------------------------|
| Left door inside panel |
| Door hinge mount |
| Door hinge plate |
| VM screws x3 |



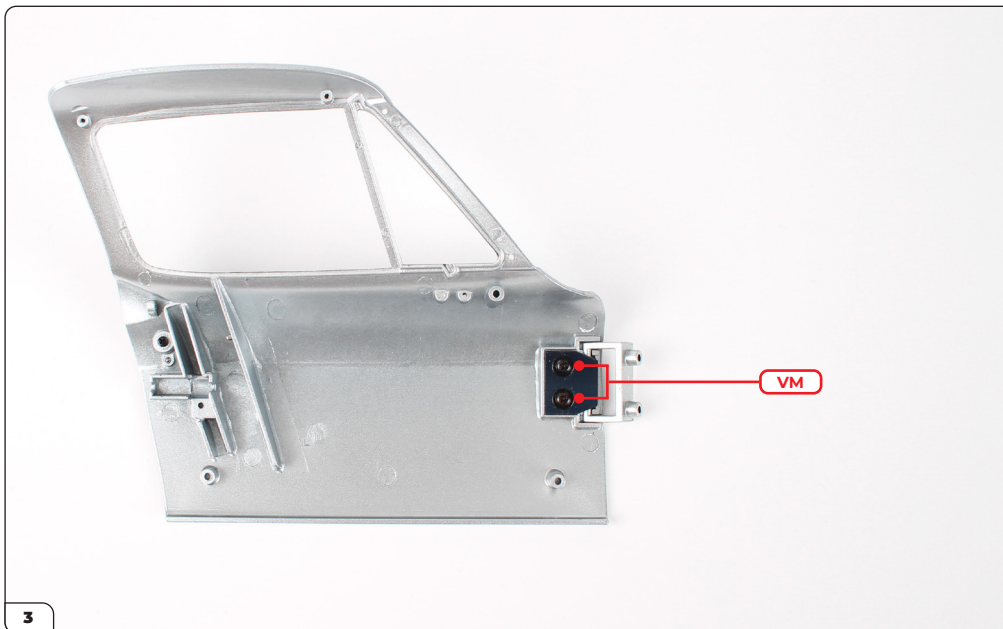
Stage 82: Fitting the Left Door Hinge



Align the door hinge mount with the left door (stage 81). Make sure the mount is oriented as shown (inset).



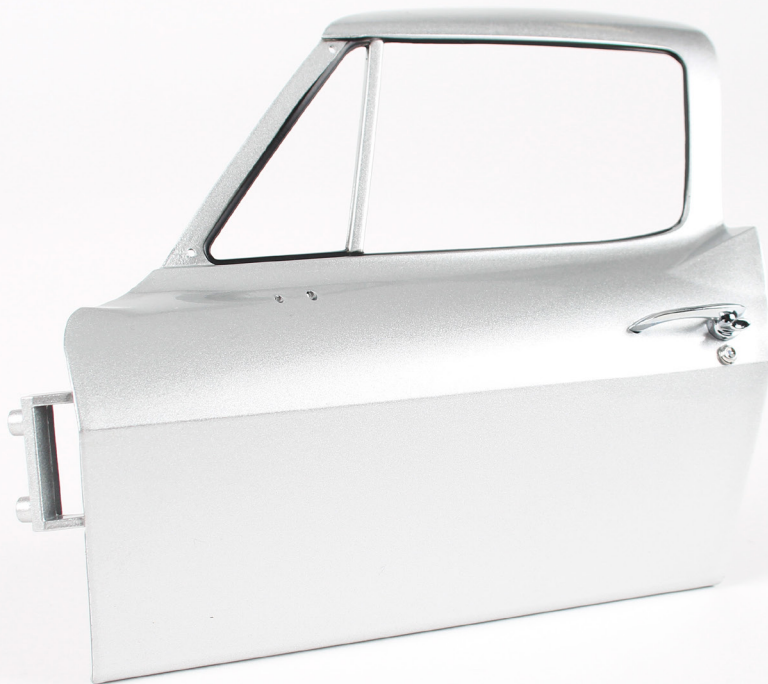
Place the hinge mount in position, then align the door hinge plate as shown.



Secure the hinge plate using 2x VM screws.

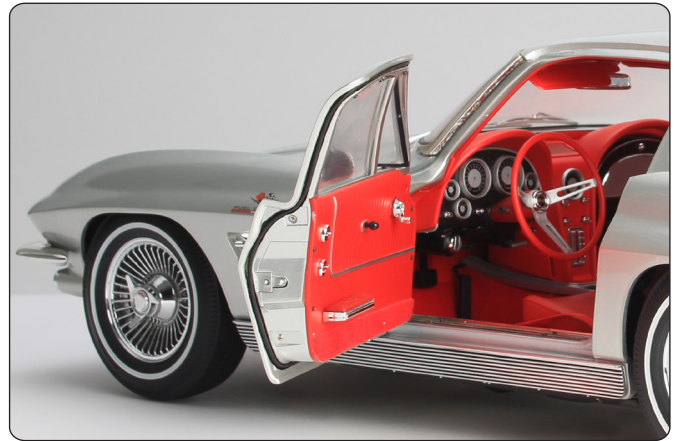
Stage 82: Fitting the Left Door Hinge

STAGE COMPLETE



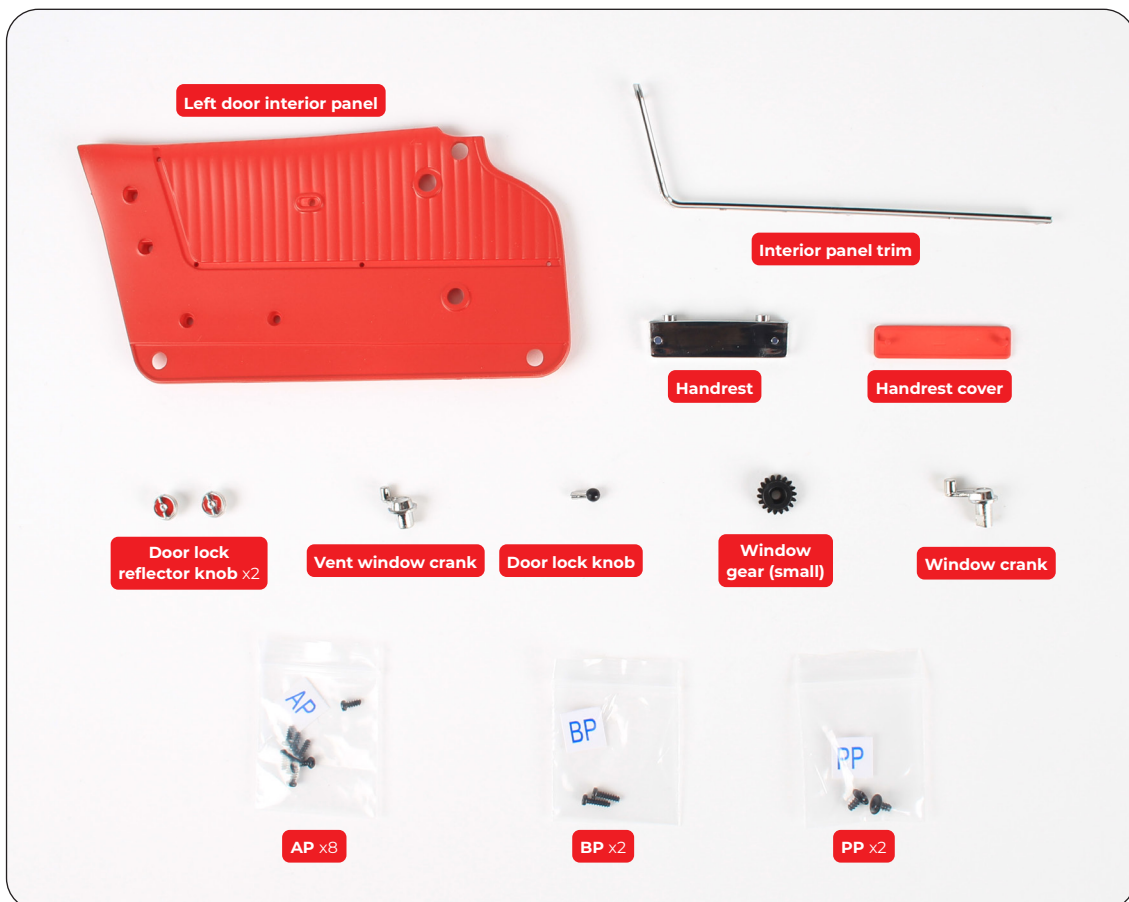
Stage 83: Detailing the Left Door Interior Panel

In this stage you'll add details to the left door interior panel then fit it to the inside panel from stage 82.

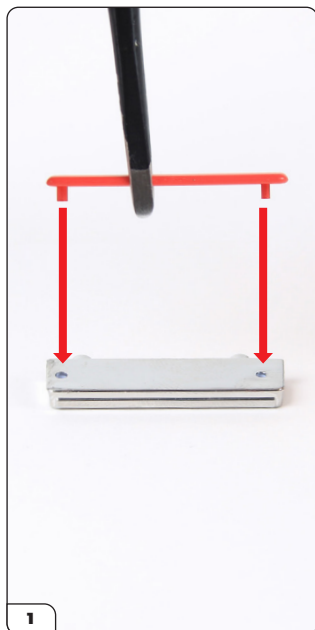


STAGE 83 PARTS LIST

| Name | Name |
|-----------------------------|---------------------|
| Left door interior panel | Door lock knob |
| Interior panel trim | Window gear (small) |
| Handrest | Window crank |
| Handrest cover | AP screws x8 |
| Door lock reflector knob x2 | BP screws x2 |
| Vent window crank | PP screws x2 |



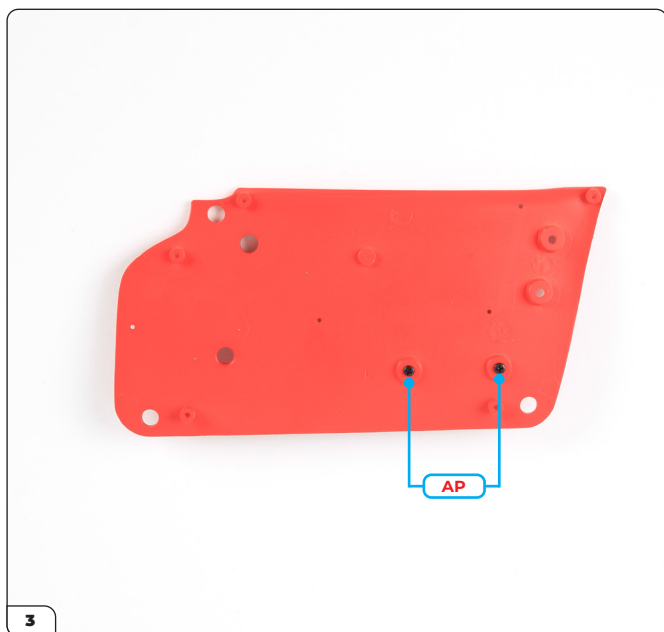
Stage 83: Detailing the Left Door Interior Panel



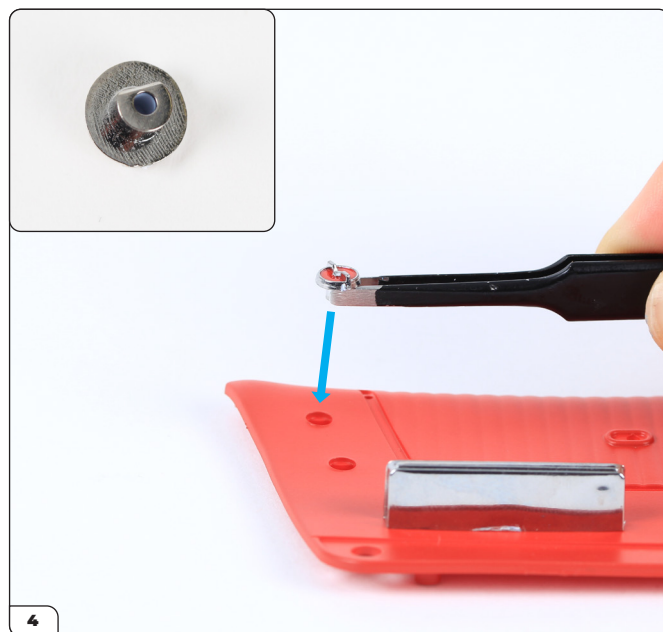
Take the handrest cover and press it into the handrest. The pins and holes are different sizes to ensure the correct fit.



Align the handrest with the interior panel as shown, then fit in place.



Secure from underneath with 2x AP screws.

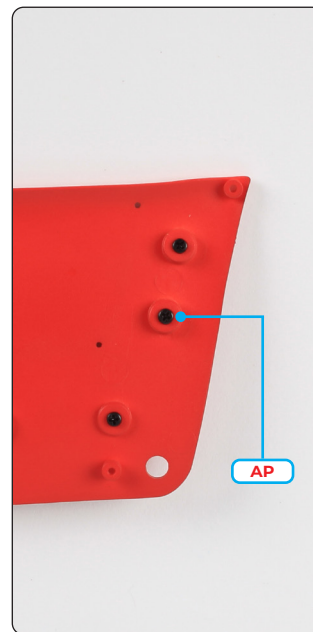


Take the door lock reflector knobs which have shaped screw holes (inset). Fit one of them into the shaped hole as shown.

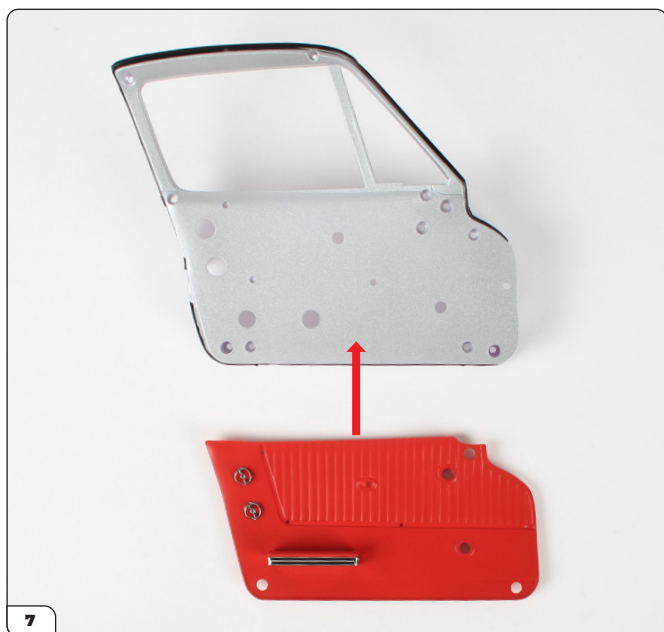
Stage 83: Detailing the Left Door Interior Panel



Secure from the other side using an AP screw.



Fit the other reflector knob in the same way and secure with an AP screw.

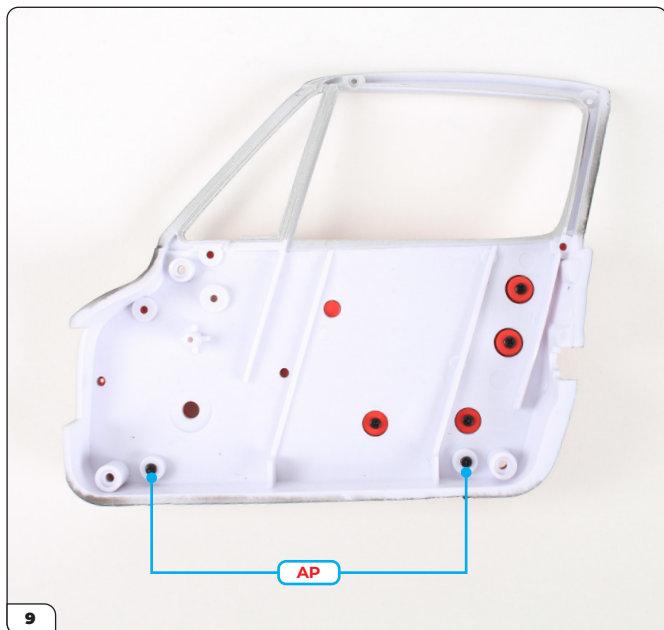


Align the interior panel with the left door inside panel from stage 82.



Fit the interior panel in place by pushing the screw columns into the holes.

Stage 83: Detailing the Left Door Interior Panel



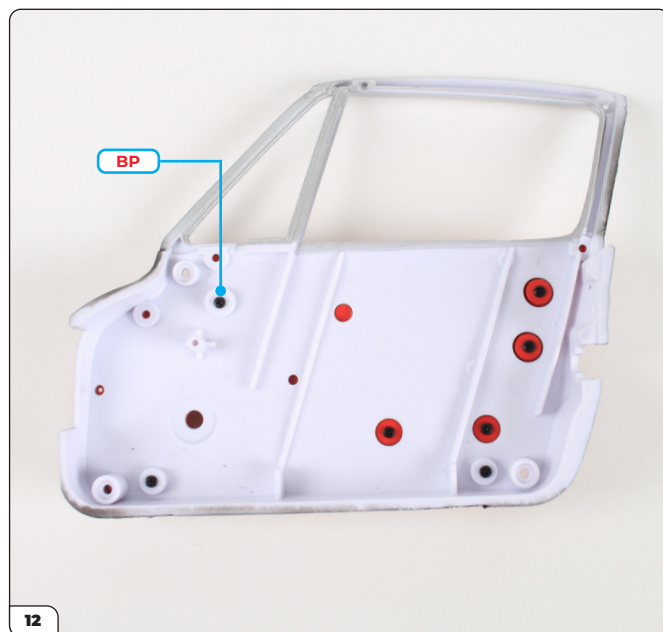
Turn over and secure with 2x AP screws.



Take the vent window crank (circled) and fit it into the shaped hole.



The small vent window crank should look like this.



Secure with a BP screw.

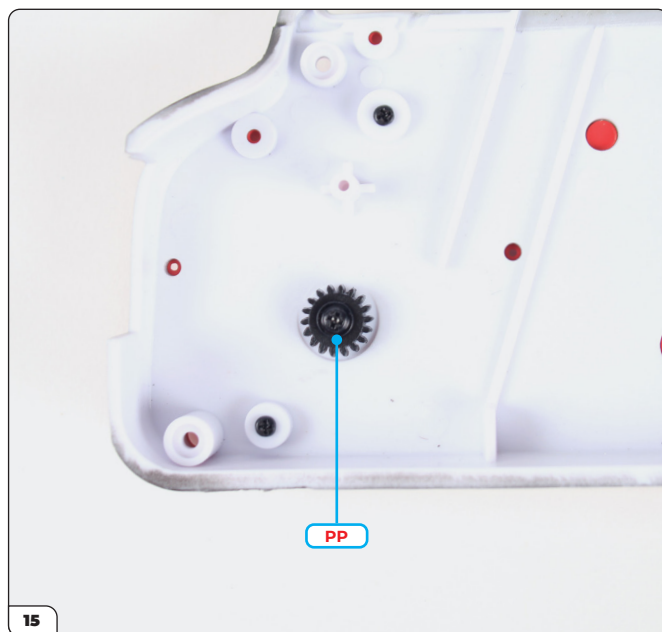
Stage 83: Detailing the Left Door Interior Panel



Fit the larger window crank into the hole as shown. This part will turn to raise or lower the window so can be fitted in any orientation.



From the reverse side, fit the small window gear onto the crank, using the shaped hole (inset).



Secure with a PP screw.

Stage 83: Detailing the Left Door Interior Panel



Align the interior panel trim as shown.



Press the trim into the panel.



Fit the door lock knob into the hole as shown.



Stage 83: Detailing the Left Door Interior Panel

STAGE COMPLETE



Stage 84: Assembling the Left Window and Door

In this stage you'll assemble the mechanism for working the left window then attach the two parts of the door together.

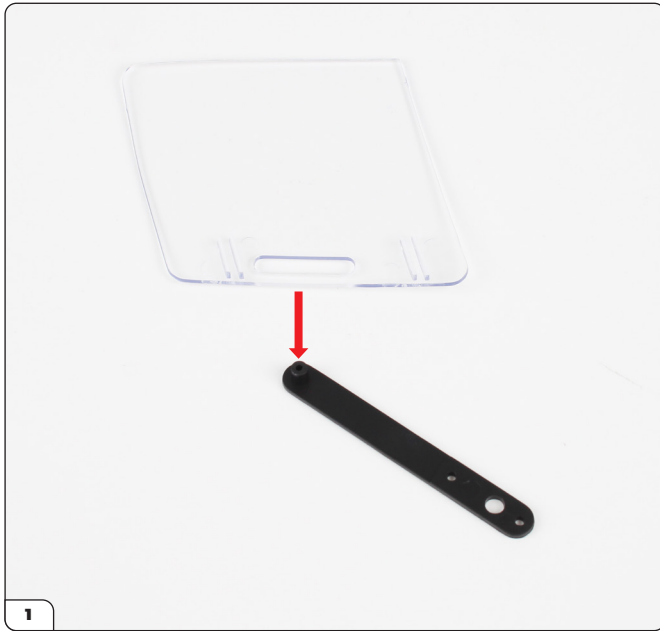


STAGE 84 PARTS LIST

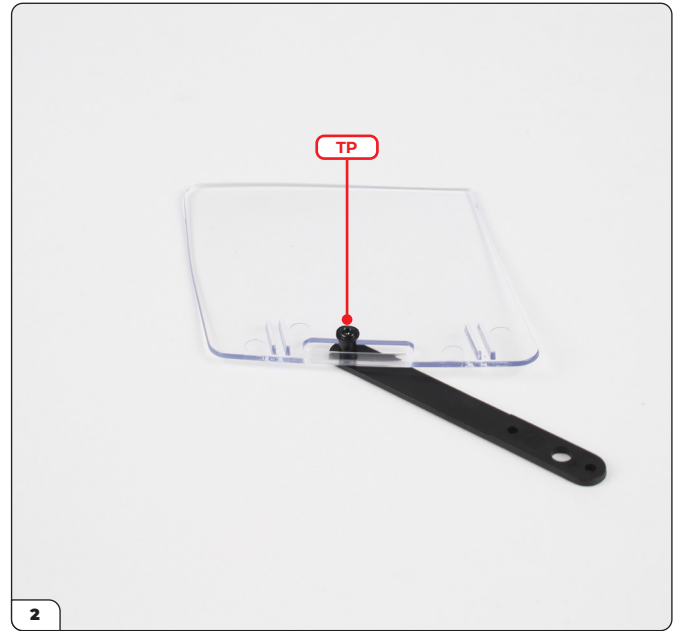
| Name | Name |
|--------------------------|-----------------------|
| Left window | Left door chrome trim |
| Left quarter vent window | Left door carpet trim |
| Lock pin | DM screw x4 |
| Spring | FM screw x3 |
| Lock pin bushing | TP screw x3 |
| Window gear (large) | WM screw x3 |
| Gear arm | |



Stage 84: Assembling the Left Window and Door



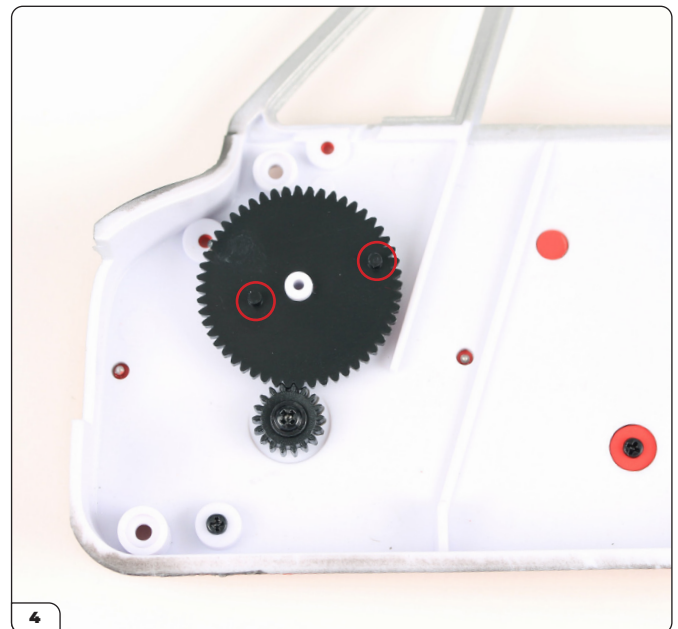
Align the left window with the raised screw hole on the gear arm.



Fit the window onto the gear arm and secure using a TP screw. The arm should be able to move in the channel.

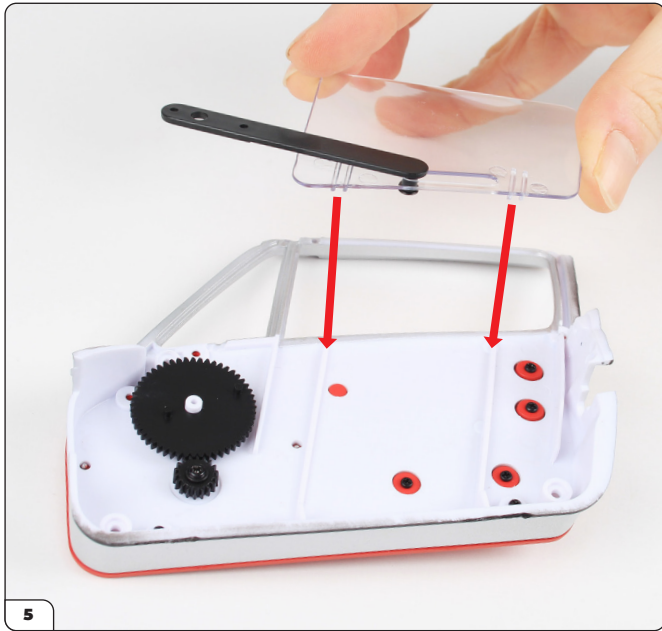


Take the interior panel assembly (stage 83) and fit the large window gear in place. The pins on the gear should face upwards as shown.

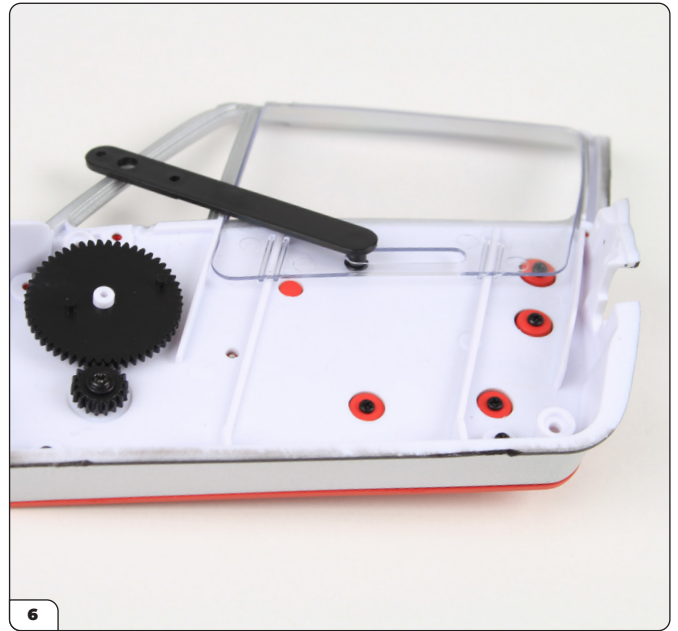


Check that the teeth and the gears are engaged, then turn the gears so that the pins on the large gear are oriented as shown.

Stage 84: Assembling the Left Window and Door



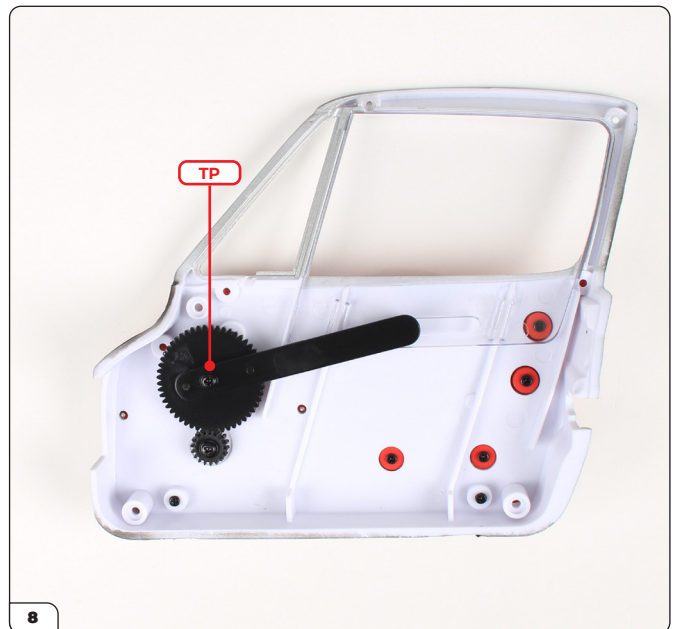
Take the left window and align it with the assembly as shown. The channels on the window fit over the ridges on the panel.



Fit the window in place as shown.

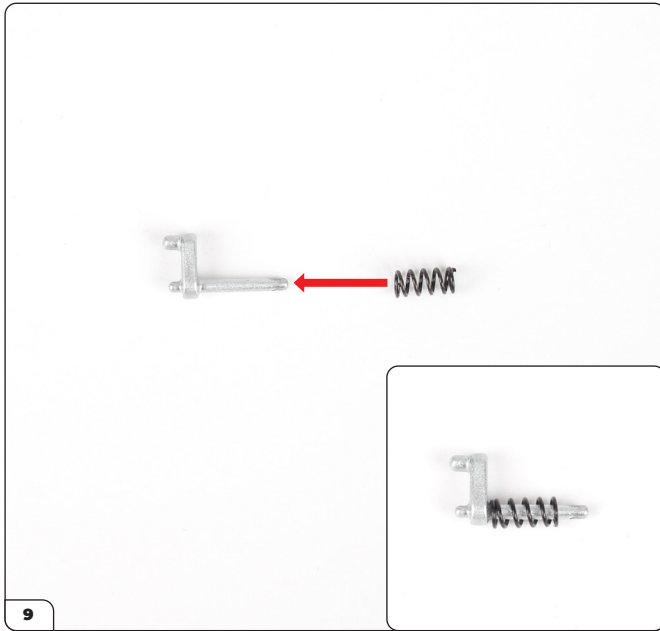


Press the smaller holes on the gear arm over the pins on the large gear.



Secure in place with a TP screw.

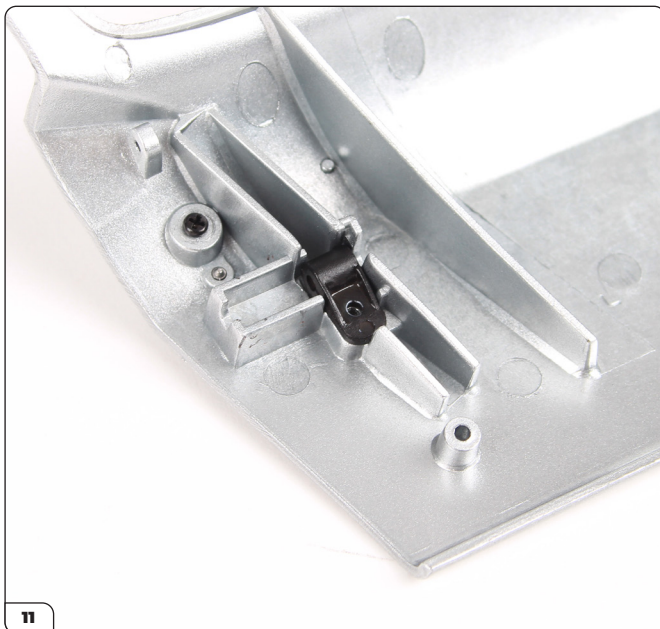
Stage 84: Assembling the Left Window and Door



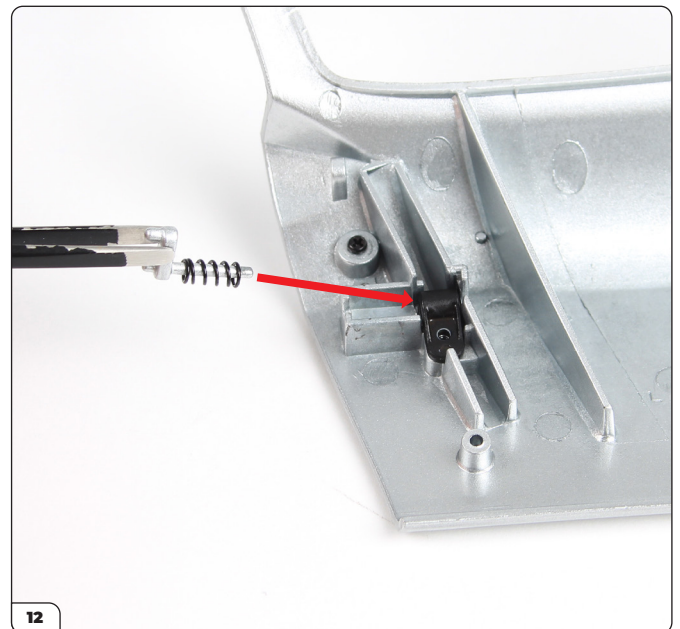
Fit the spring onto the lock pin.



Take the door assembly (stage 82) and align the lock pin bushing with it as shown. Make sure the bushing is oriented the correct way round (inset).

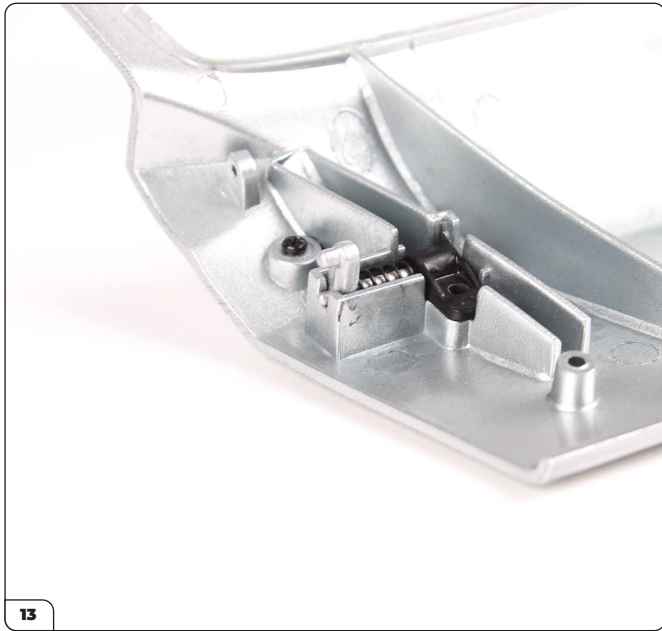


Fit the bushing in place.

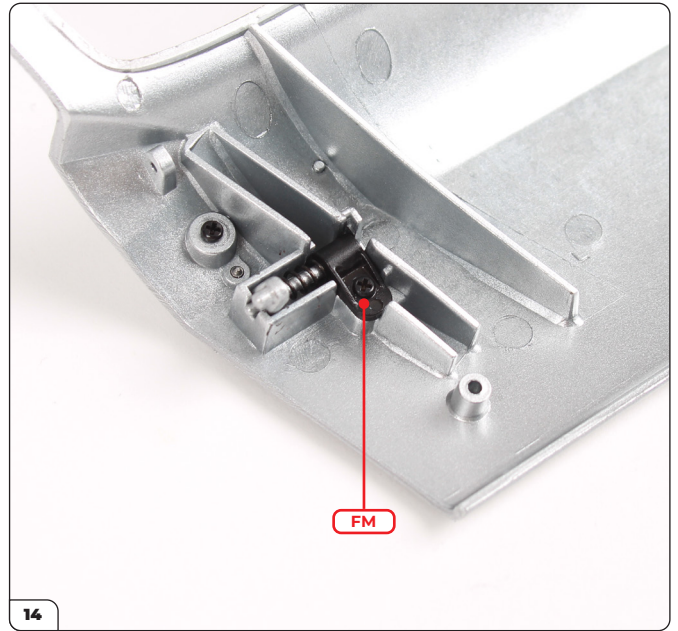


Take the lock pin and fit it into the recess next to the bushing. The end of the pin fits into the hole on the side of the bushing.

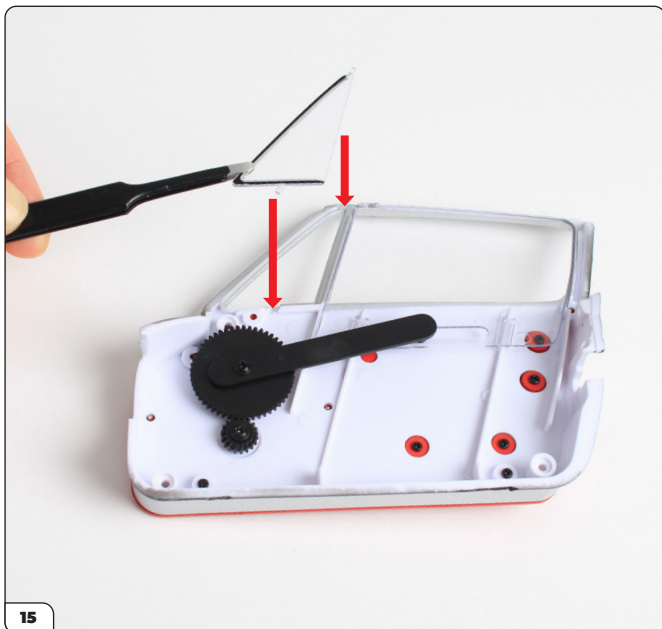
Stage 84: Assembling the Left Window and Door



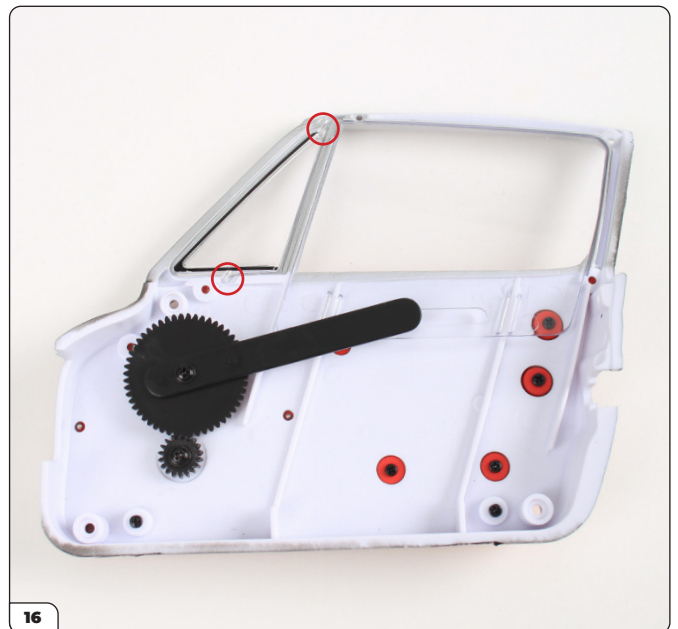
The lock pin should look like this once in place.



Secure the bushing with an FM screw.



Set the door assembly to one side and take the interior panel assembly. Align the left quarter vent window as shown.

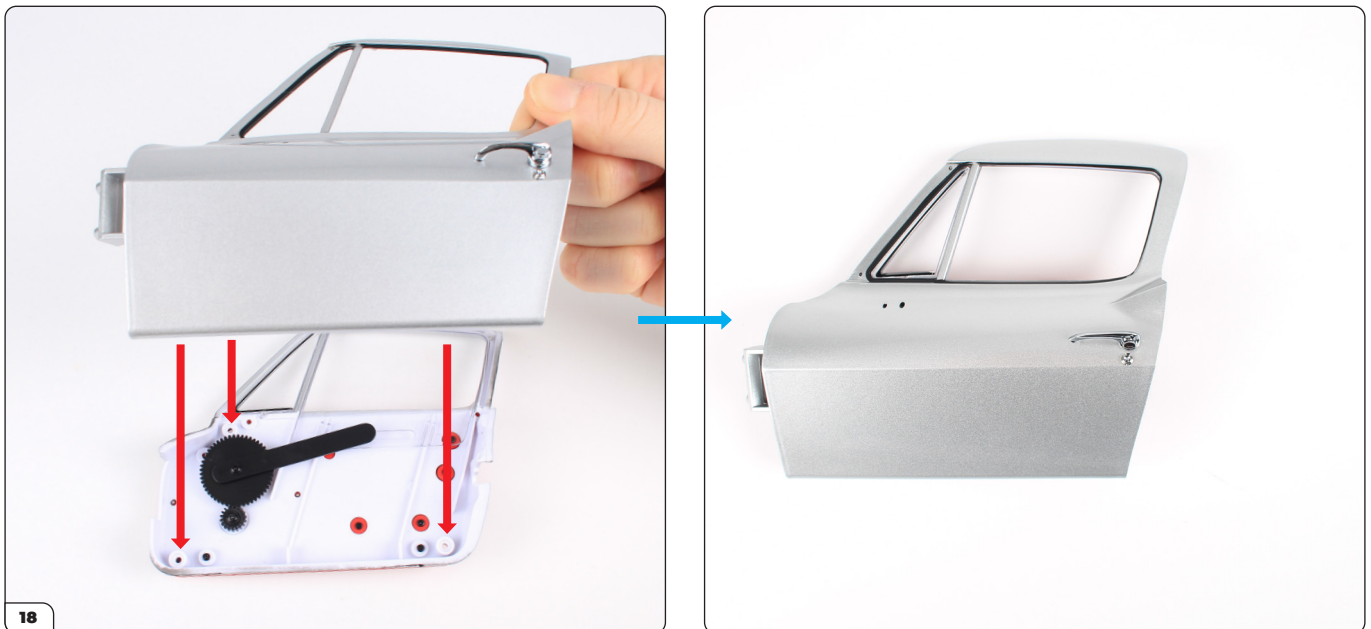


Fit the left quarter vent window in place. Make sure the pins are positioned in the recesses.

Stage 84: Assembling the Left Window and Door

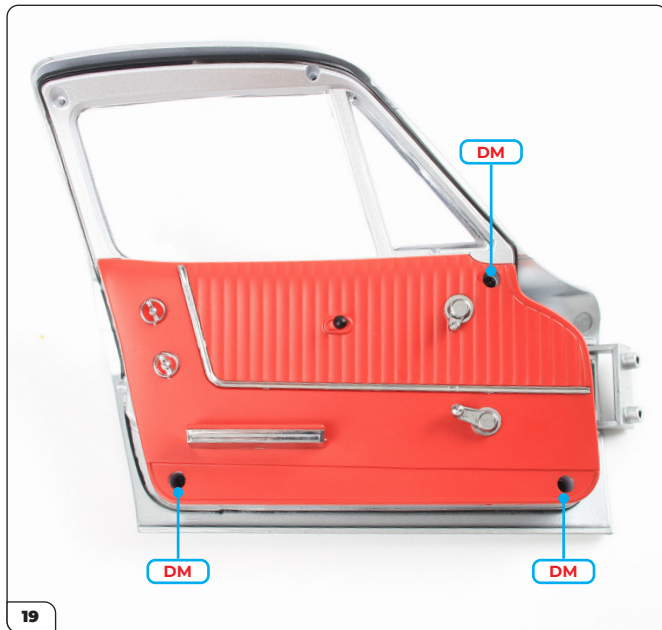


Take the door assembly and note the fixing points for the two parts.

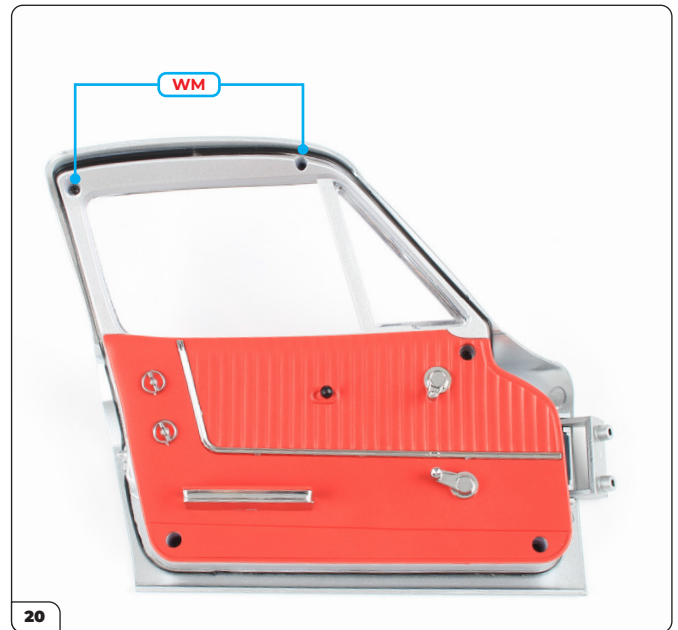


The windows are loose so it is easier to fit the door onto the panel. Fit the parts together, making sure the quarter vent window pins stay in position (see step 16).

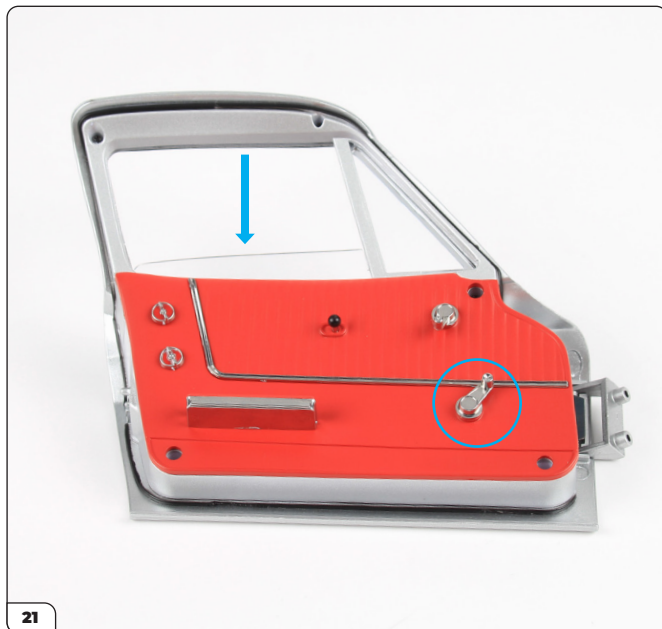
Stage 84: Assembling the Left Window and Door



Use 3x DM screws to secure the parts together.



Use 2x WM screws to secure the top part of the door.



Test the function of the window by turning the window crank.

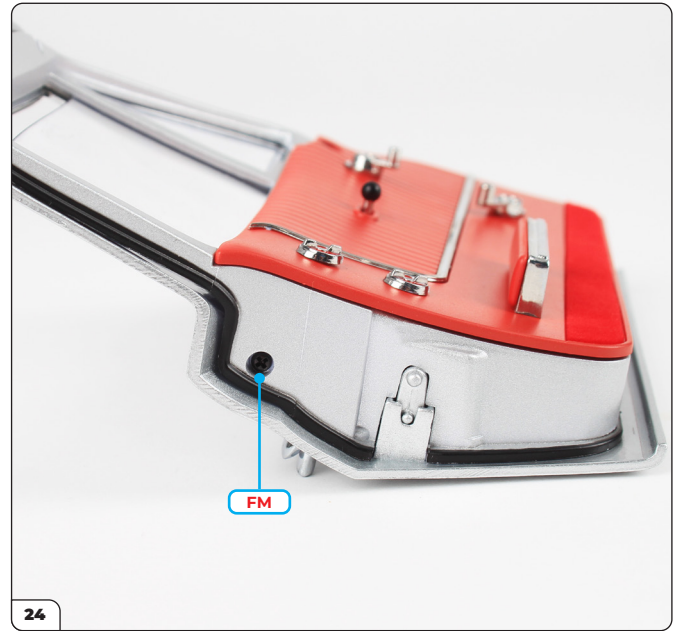


Peel the backing paper from the left door carpet trim (inset) then carefully stick the corner into the recess on the interior panel.

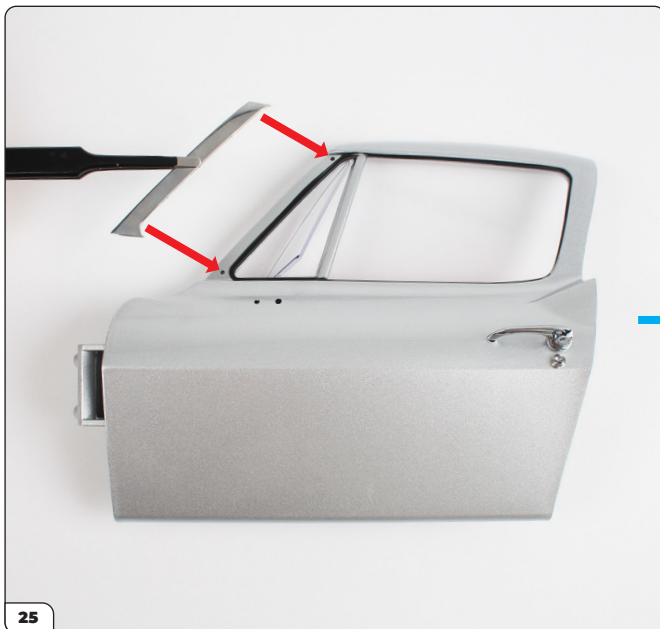
Stage 84: Assembling the Left Window and Door



Press the carpet trim in place, using the recess to align it.



Drive an FM screw into the hole located near to the lock pin.



Take the left door chrome trim and align it with the section next to the quarter vent window as shown. Press the trim into the two holes firmly.

Stage 84: Assembling the Left Window and Door

STAGE COMPLETE



Stage 85: Preparing the Main Body

In this stage you'll prepare the main body by removing a support bar and fitting locks for the doors.

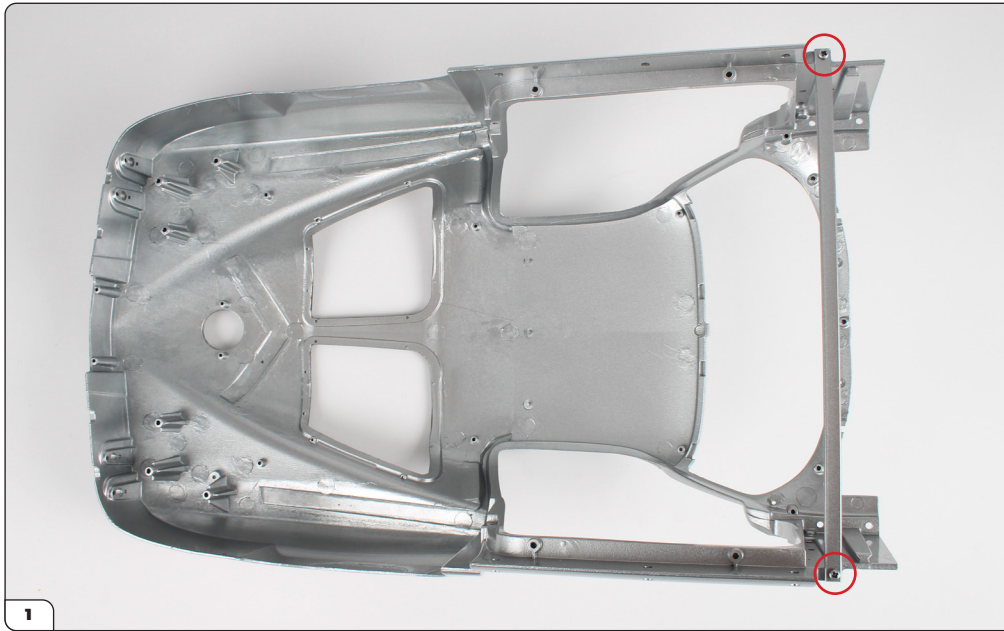


STAGE 85 PARTS LIST

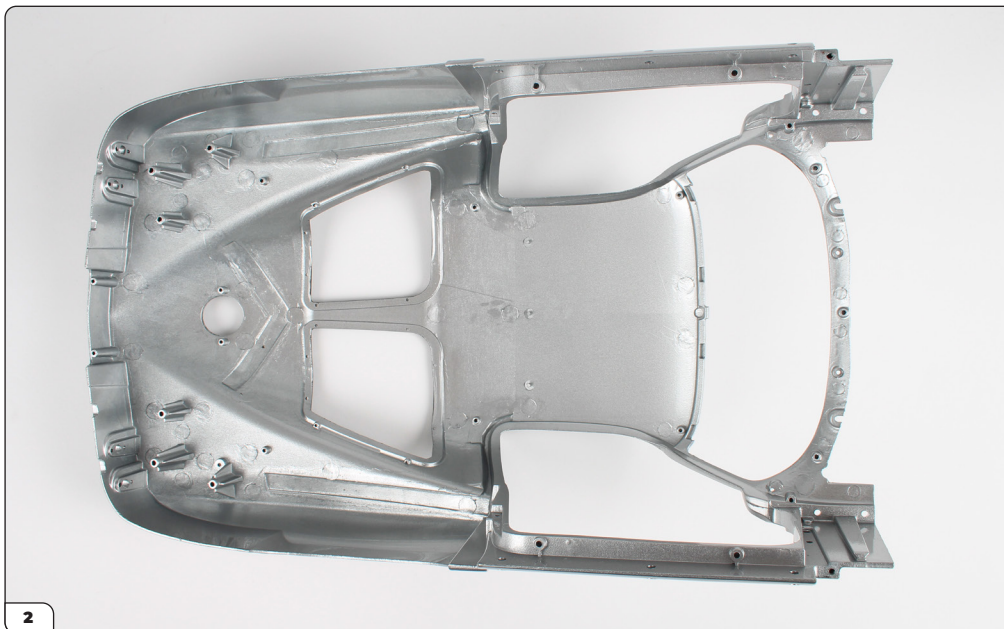
| Name |
|-------------|
| Main body |
| Lock (L) |
| Lock (R) |
| AP screw x3 |



Stage 85: Preparing the Main Body

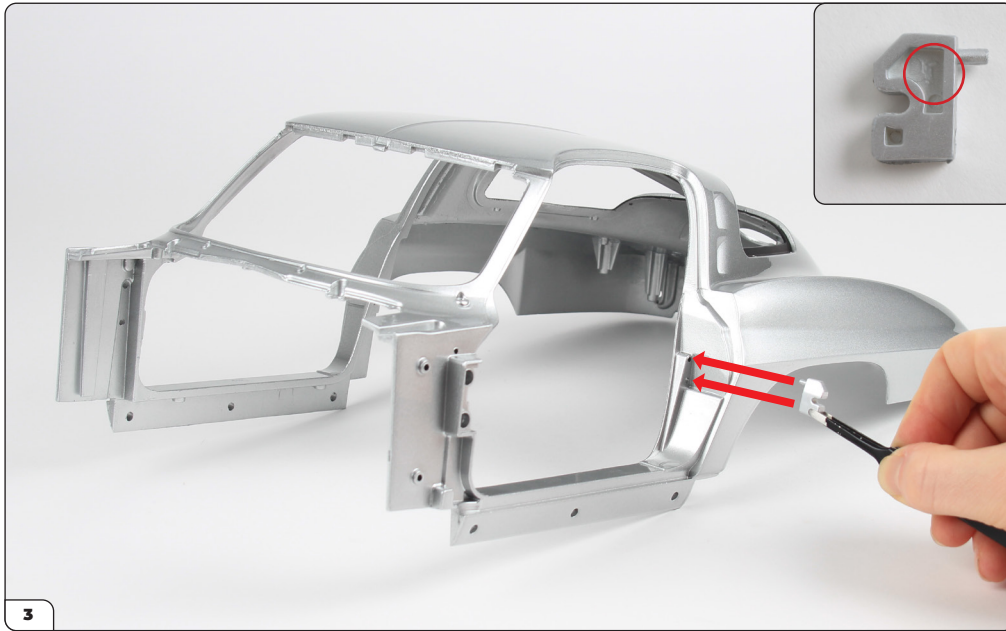


Start by taking the main body and removing the screws (circled) holding the support bar.



Remove the support bar. The bar and screws can be discarded.

Stage 85: Preparing the Main Body

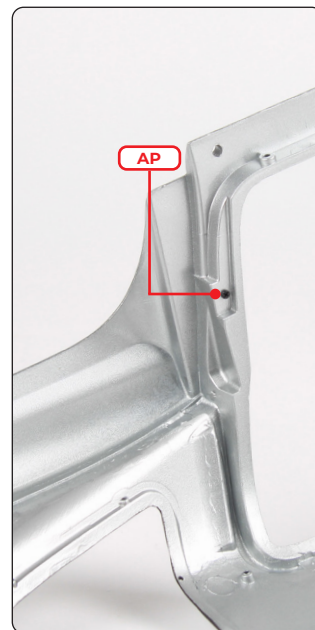
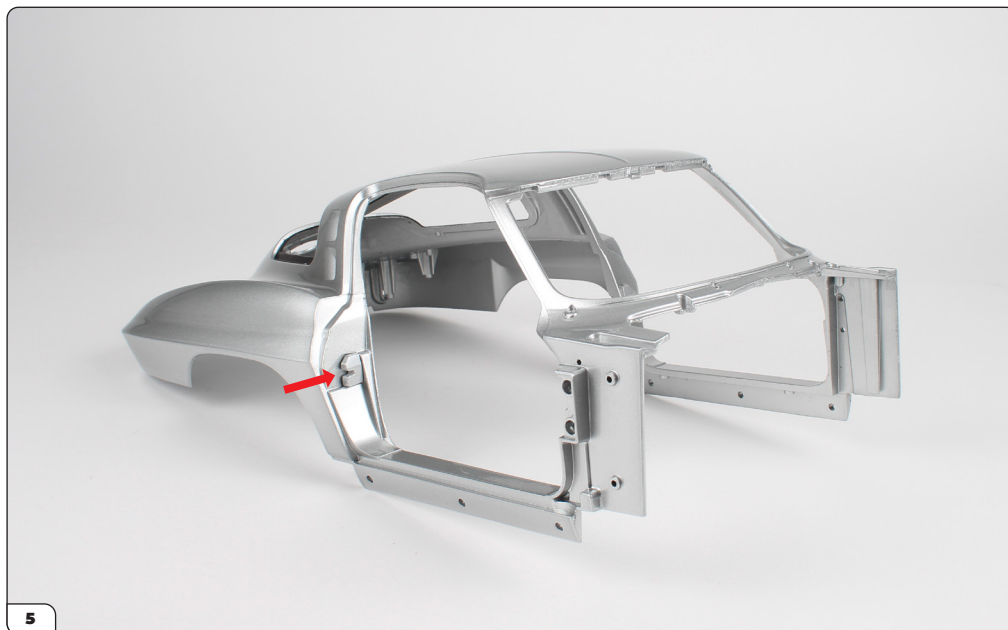


Take the left lock, which has 'L' printed on it (inset). Align it with the left side of the main body.



Press the lock in place then secure it from the inside using an AP screw.

Stage 85: Preparing the Main Body



Fit the right lock (marked 'R') on the opposite side and secure it using an AP screw in the same way.

