

**THE  
SPY WHO  
LOVED  
ME™**

LOTUS  
**esprit**



# Pack 01

## BUILD INSTRUCTIONS

STAGE 001: ASSEMBLING THE BONNET

STAGE 002: BUILDING THE FRONT WINGS  
AND BUMPER

STAGE 003: CONSTRUCTING THE ENGINE  
CYLINDER HEAD

STAGE 004: FITTING THE RIGHT DOOR  
HANDLE, LOCK MECHANISM, HINGE,  
AND WINDOW

STAGE 005: BUILDING THE RIGHT DOOR  
INTERIOR PANEL

STAGE 006: ASSEMBLING THE RIGHT DOOR

THE SPY WHO LOVED ME © Danjaq, LLC and Metro-Goldwyn-Mayer Studios Inc. THE SPY WHO LOVED ME, *007™* and related James Bond Indicia © 1962-2024 Danjaq, LLC and Metro-Goldwyn-Mayer Studios Inc. THE SPY WHO LOVED ME, *007™* and related James Bond Trademarks are trademarks of Danjaq, LLC. All Rights Reserved. Produced under licence from Group Lotus LTD. LOTUS, the Lotus Roundel, car names and all associated logos and distinctive designs are trade marks of Group Lotus LTD.

## Advice from the experts

---

Spare screws are included with each part. Occasionally, you may be instructed to keep spare or unused screws for a later stage. Keep these spares in a safe place and label them correctly.

Please make sure you don't mix up the screws. They look quite similar, but the threads do vary slightly. Using the wrong screws may damage the parts.

When securing parts together using multiple screws, fit each screw loosely to ensure all the parts are correctly aligned before gently tightening them firmly, but not overtight, in the order in which you placed them.

The screwdriver can be magnetized by stroking it with a magnet (fridge magnet, etc.) enabling it to hold the screws and make assembly easier.

If a screw is tight going into a metal part, do not force it as you may shear the head off. Remove it and put a tiny smear of Vaseline, soap or light oil on the thread. That will lubricate it and make it easier to drive home.

During the course of this build, you will receive many pieces that you will assemble immediately – following the instructions in the corresponding stage – and other pieces that you should store safely to one side, for use in future assembly stages.

Left and Right! When building your *The Spy Who Loved Me* Lotus Esprit, the left- or right-hand side refers to that side as if you are sitting in the car.

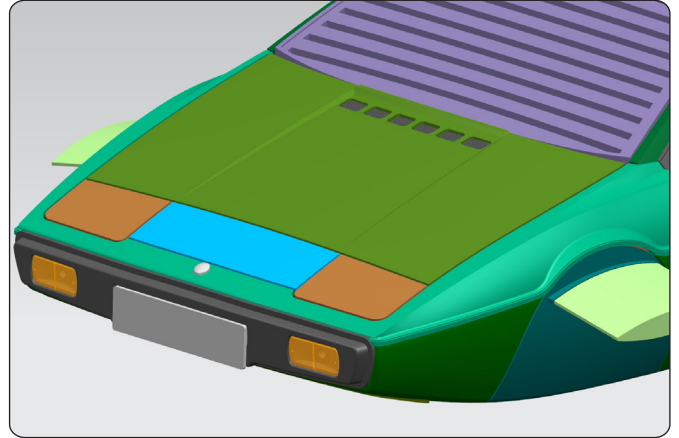


**WARNING:** Some parts are assembled using magnets. These magnets can cause serious injury if they are swallowed. Keep away from children. If you suspect a magnet has been swallowed, seek medical help straight away.

## Stage 001: Assembling the Bonnet

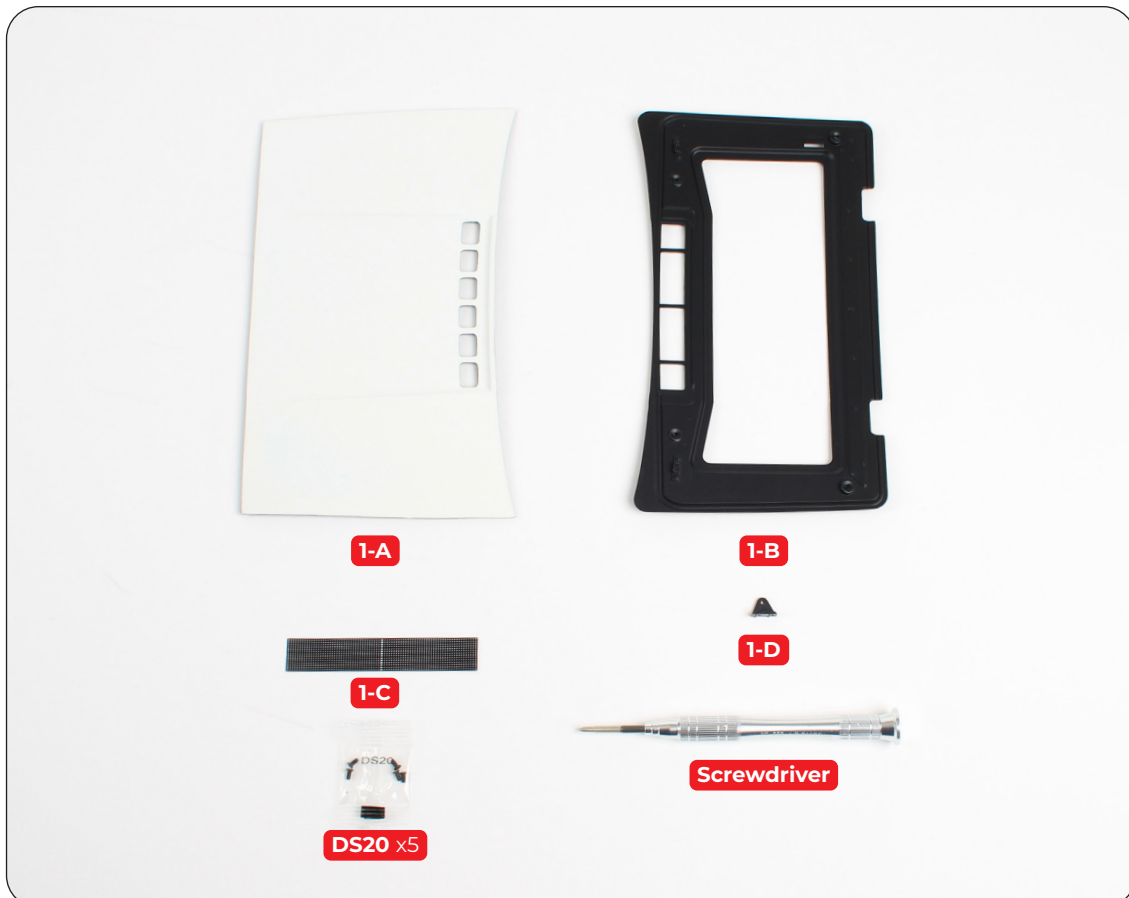
In this stage you'll assemble the bonnet by fitting the air intake grille, subframe, and strut bracket.

Ensure you have a soft cloth on your work surface to protect the paintwork when working with any parts of the car body.

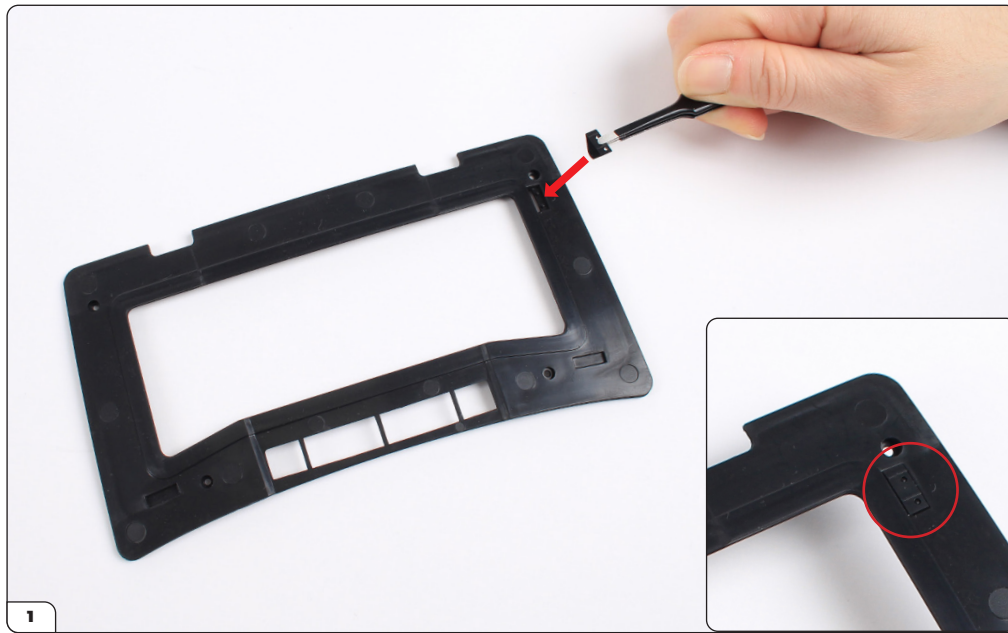


### STAGE 001 PARTS LIST

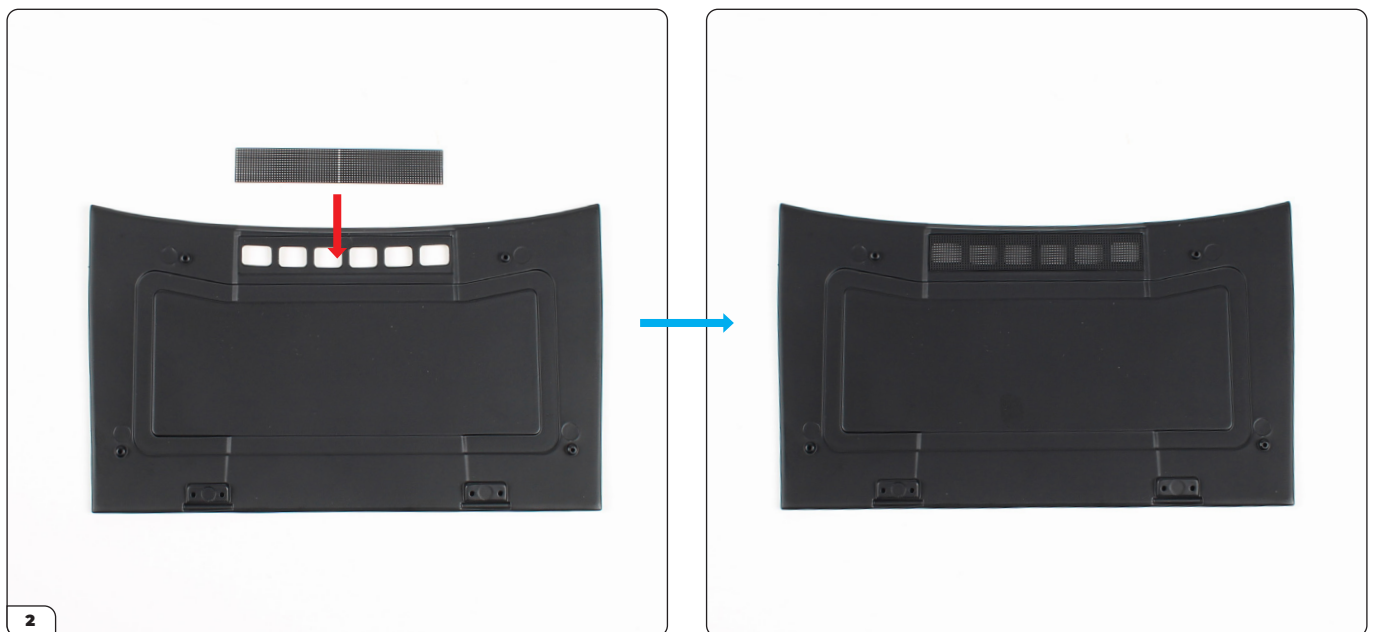
Name
1-A Bonnet
1-B Bonnet subframe
1-C Air intake grille
1-D Bonnet strut bracket
DS20 screws x5
Screwdriver



## Stage 001: Assembling the Bonnet



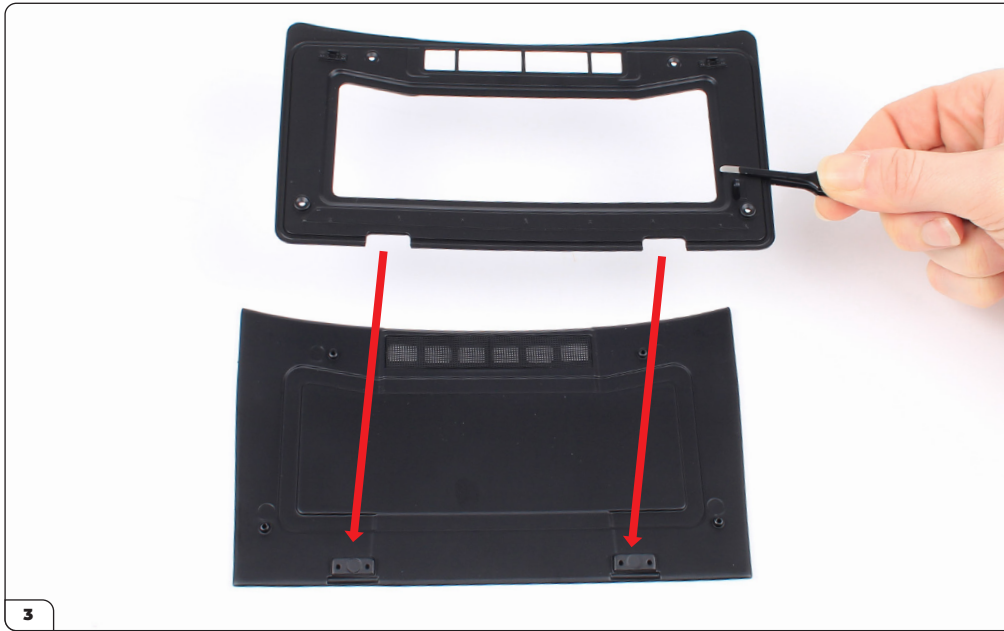
Take the bonnet subframe (1-B) and fit the strut bracket (1-D) onto the two pins as shown.



Lay the bonnet (1-A) face down then position the air intake grille (1-C) into the recess as shown. The grille can be fitted either way up.



## Stage 001: Assembling the Bonnet



Align the subframe with the bonnet as shown and fit into place.



Secure the parts together using 4x DS20 screws.

# Stage 001: Assembling the Bonnet

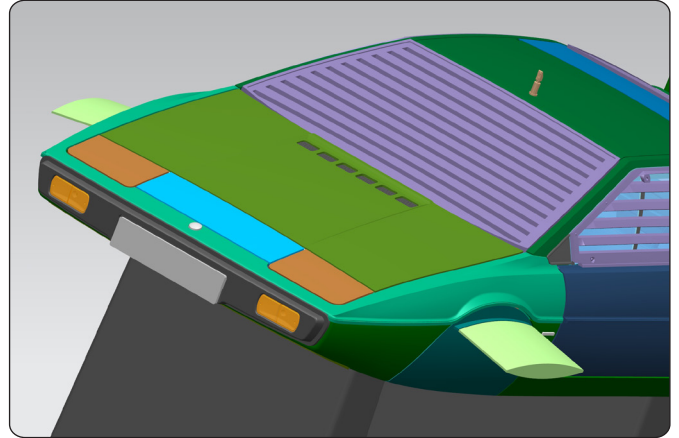
---

STAGE COMPLETE



## Stage 002: Building the Front Wings and Bumper

In this stage you'll begin building the front wings and bumper. First you'll fit the front lights to the panel, then install the panel onto the body.

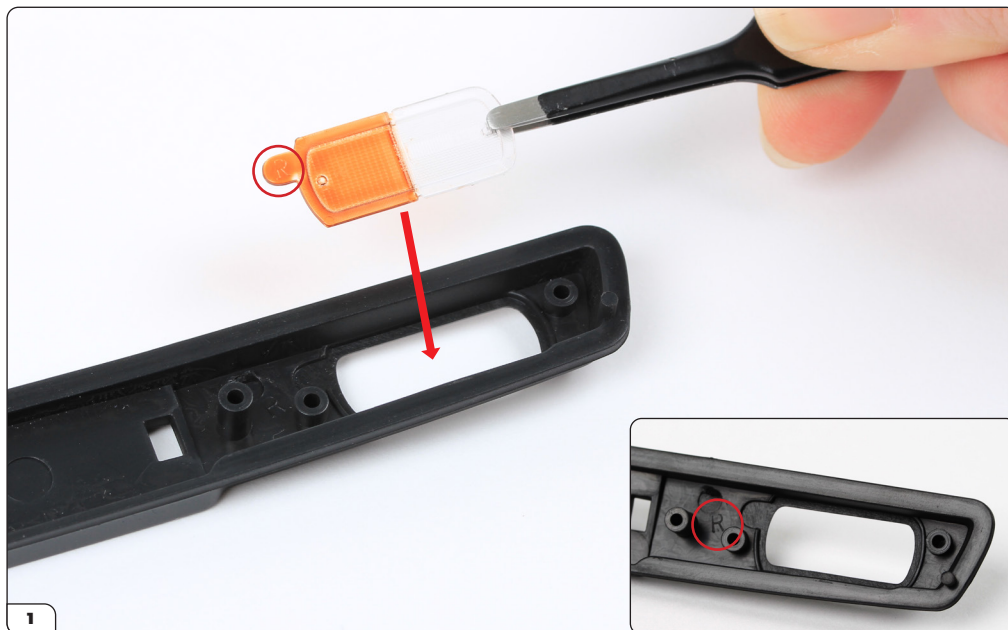


### STAGE 002 PARTS LIST

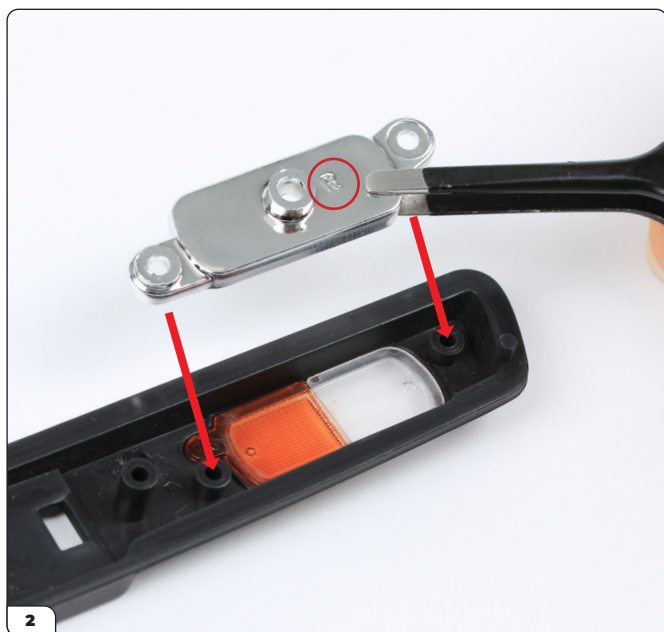
Name	
2-A Front wings	2-E Front left reflector
2-B Front bumper panel	2-F Front left lens
2-C Front right reflector	PS02 screws x7
2-D Front right lens	



## Stage 002: Building the Front Wings and Bumper



Take the front right lens (2-D) and fit it into the right side of the front bumper panel (2-B). The lens and the panel are marked with 'R' (circled).



Fit the front right reflector (2-C), marked with an 'R' (circled), over the screw posts.



Secure the reflector with 2x PS02 screws.

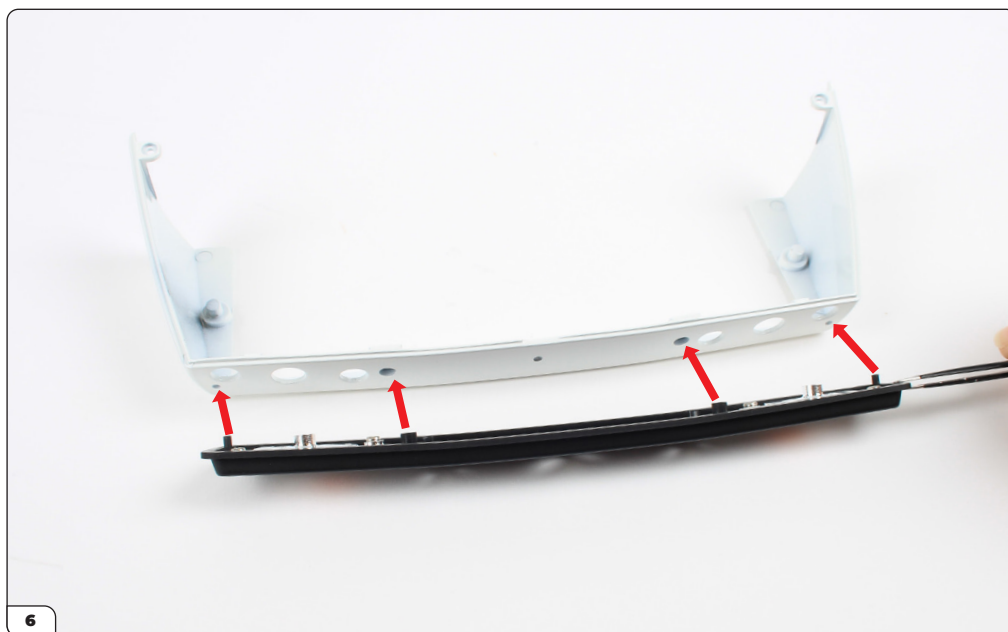
## Stage 002: Building the Front Wings and Bumper



Fit the left lens (2-F) into the left side of the panel (marked 'L').



Fit the left reflector then fix with 2x PS02 screws.



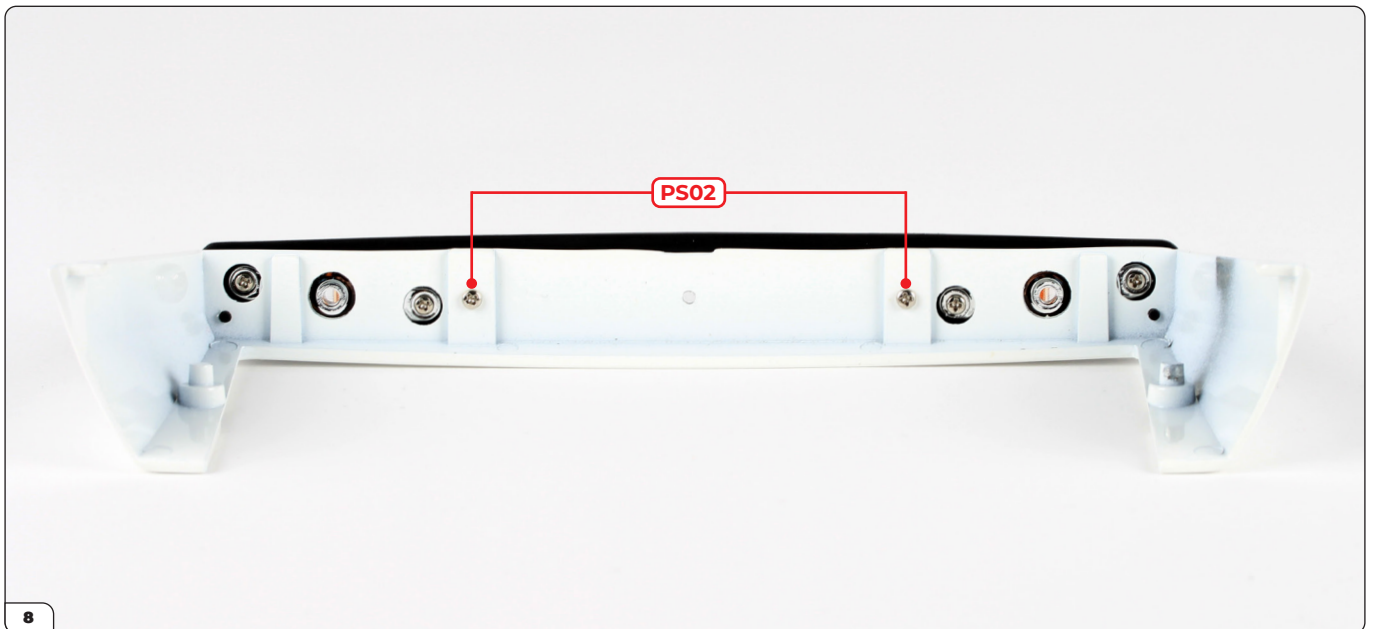
Align the panel with the front wings (2-A) using the pins and screw posts as a guide.



## Stage 002: Building the Front Wings and Bumper



Fit the panel in place.



Drive 2x PS02 screws from inside the bumper to secure together.

## Stage 002: Building the Front Wings and Bumper

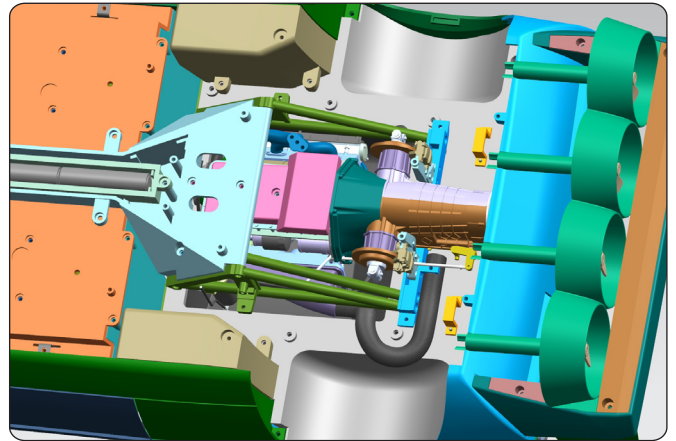
---

STAGE COMPLETE



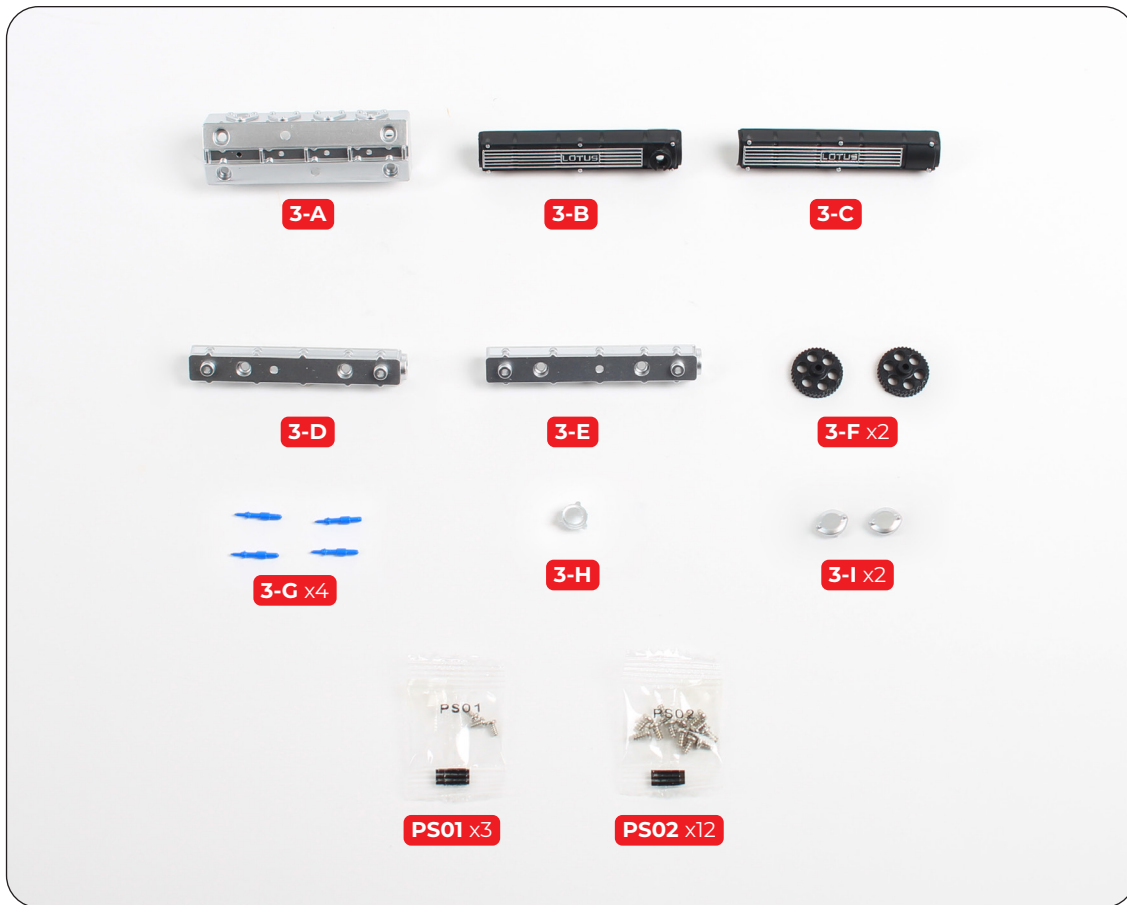
# Stage 003: Constructing the Engine Cylinder Head

In this stage you'll start building the engine block. After assembling the cam covers, you'll fit them in place and install the spark plugs.

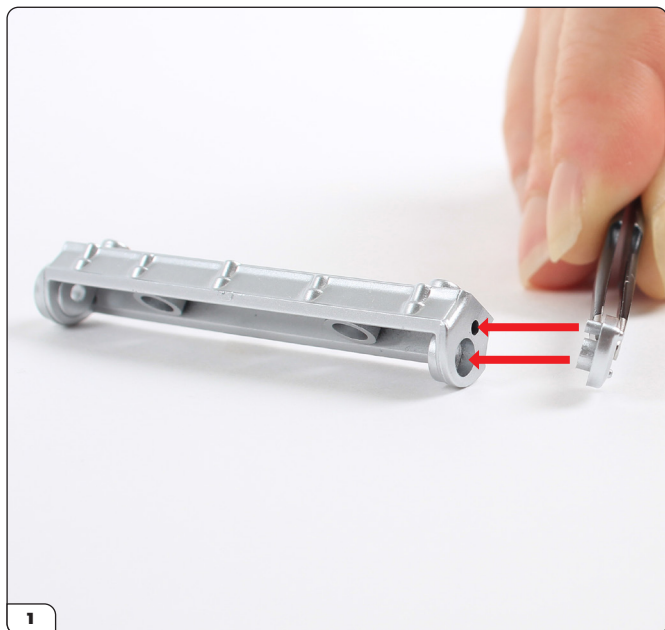


## STAGE 003 PARTS LIST

Name	
3-A Engine cylinder head	3-G Spark plug x4
3-B Right cam cover top	3-H Oil cap
3-C Left cam cover top	3-I Cam cover cap x2
3-D Left cam cover bottom	PS01 screws x3
3-E Right cam cover bottom	PS02 screws x12
3-F Gear x2	



## Stage 003: Constructing the Engine Cylinder Head



1  
Align one of the cam cover caps (3-I) with the end of a cam cover bottom as shown.



2  
Press the cap in place.



3  
Secure the cap with a PS01 screw.

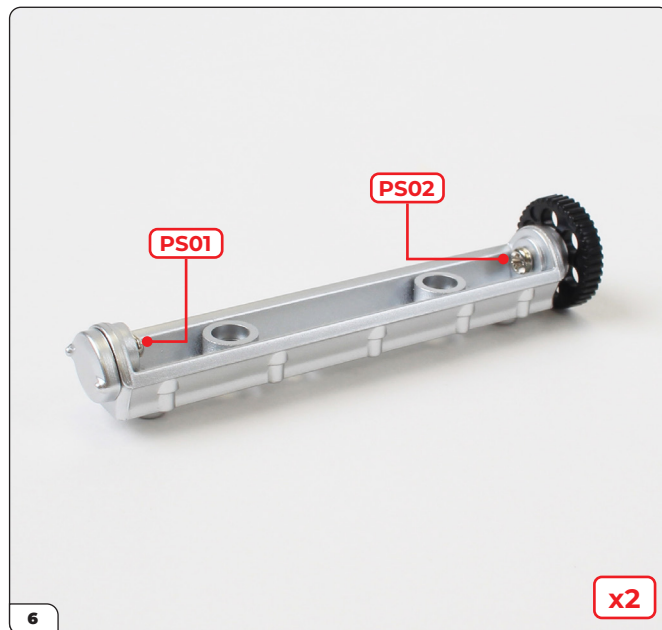


4  
Fit one of the gears (3-F) into the opposite end of the cam cover.

## Stage 003: Constructing the Engine Cylinder Head



Secure the gear with a PS02 screw.



Repeat steps 1 to 5 with the other cam cover bottom, securing the remaining cap and gear with a PS01 and PS02 screw as shown.



Fit the oil cap (3-H) into the shaped recess on the right cam cover top (3-B).



Secure using a PS02 screw.



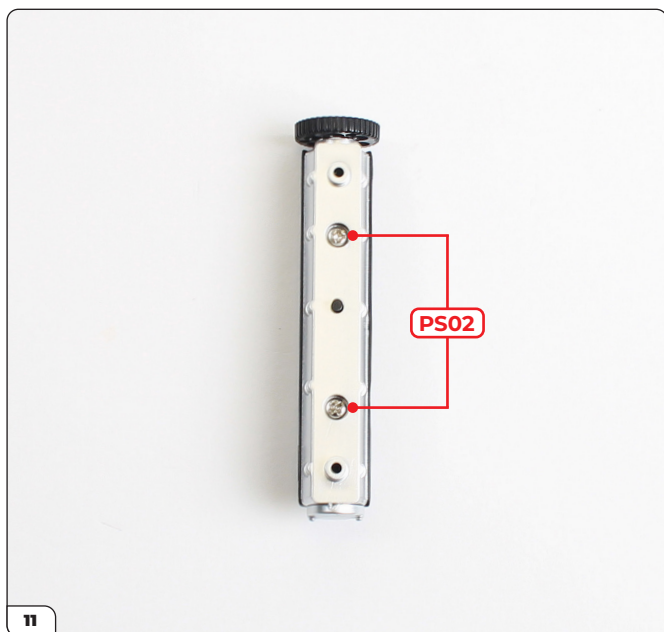
## Stage 003: Constructing the Engine Cylinder Head



Align the right cam cover top and bottom as shown. Both parts are marked with 'R' (circled).



Fit the top onto the bottom.

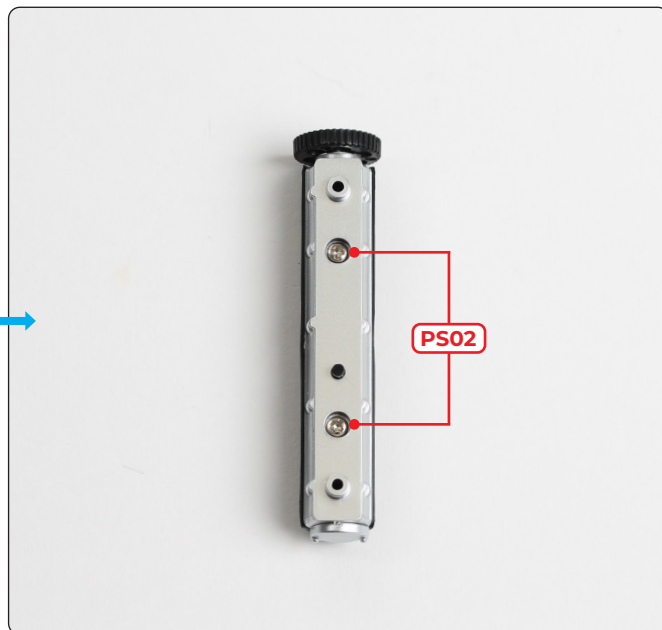
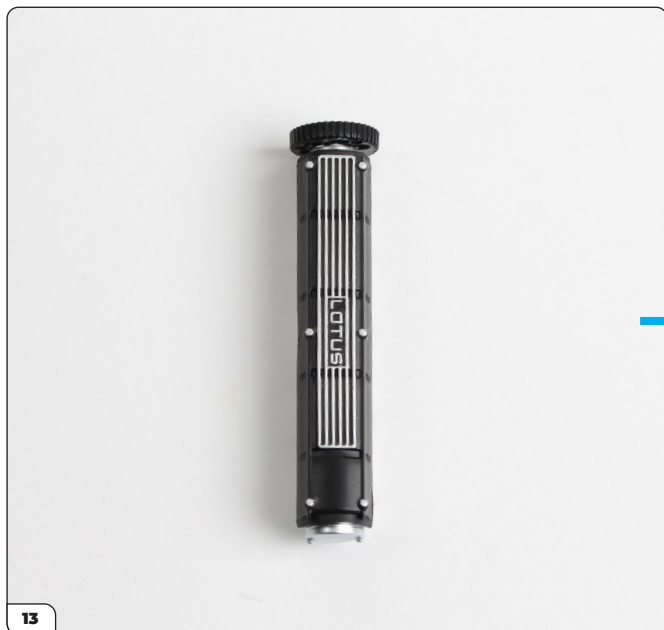


Secure together with 2x PS02 screws.

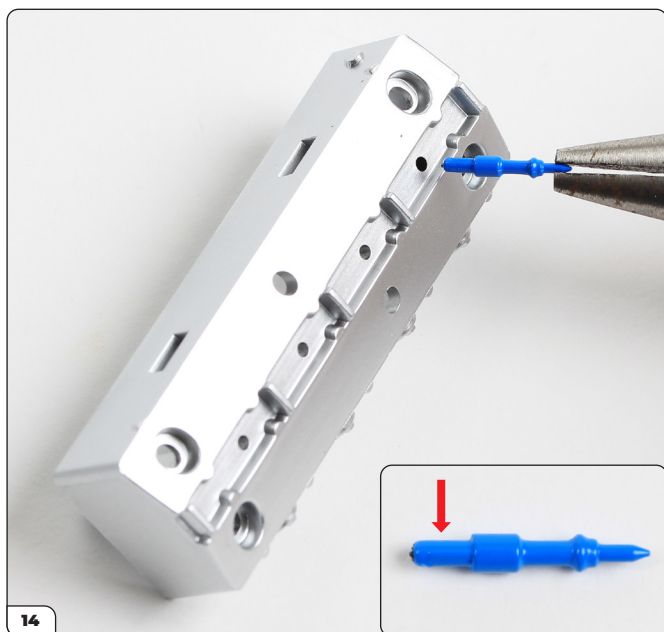


Align the left cam cover top and bottom (both marked with 'L') as shown.

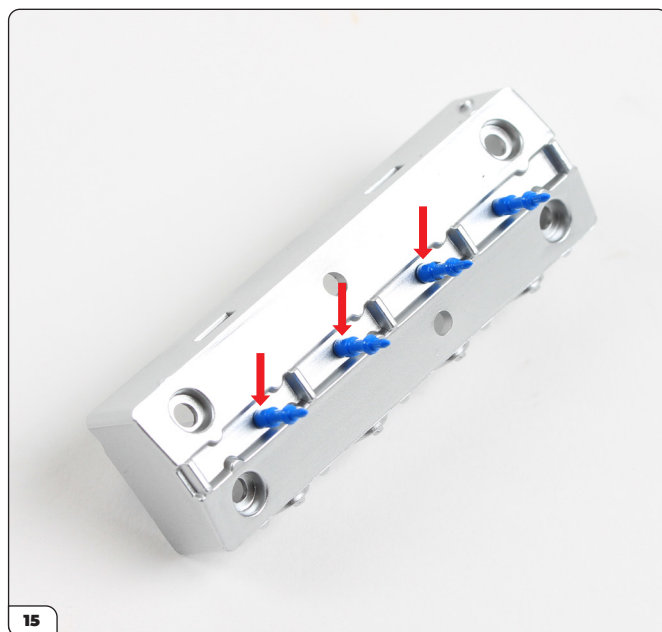
## Stage 003: Constructing the Engine Cylinder Head



Fit the parts together and secure with 2x PS02 screws.

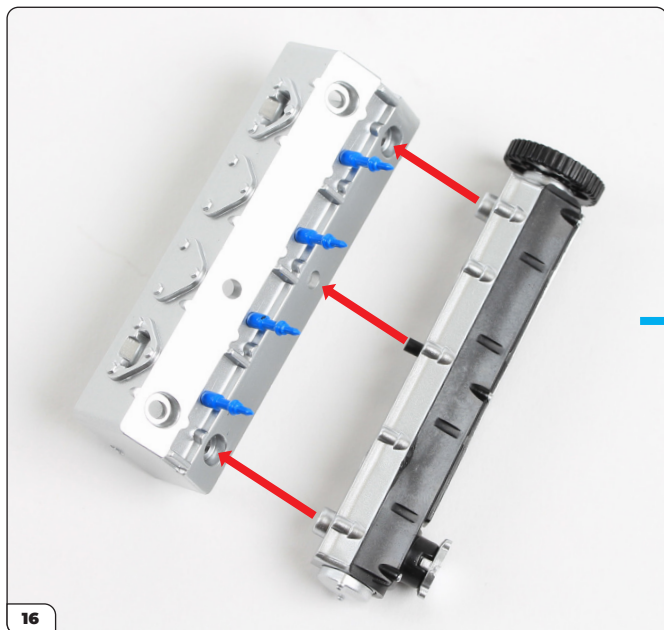


Take a spark plug (3-G) and push the thicker end (inset) into one of the holes in the engine cylinder head (3-A).

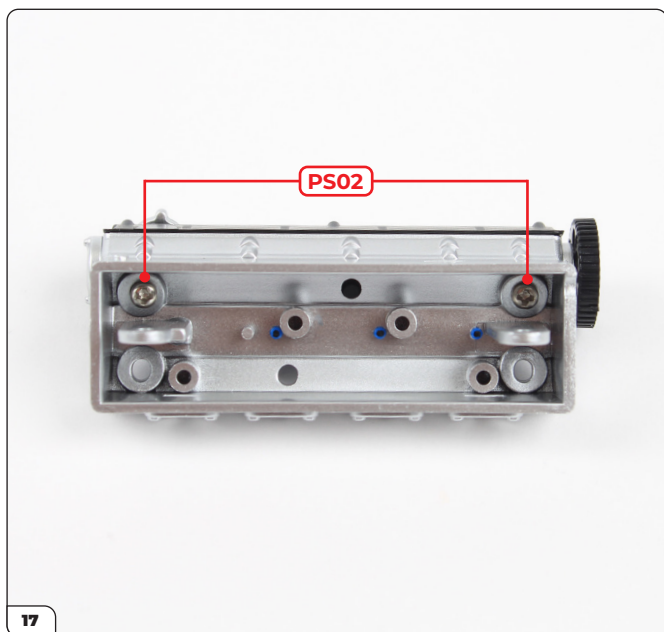


Fit the remaining spark plugs into the engine cylinder head as shown.

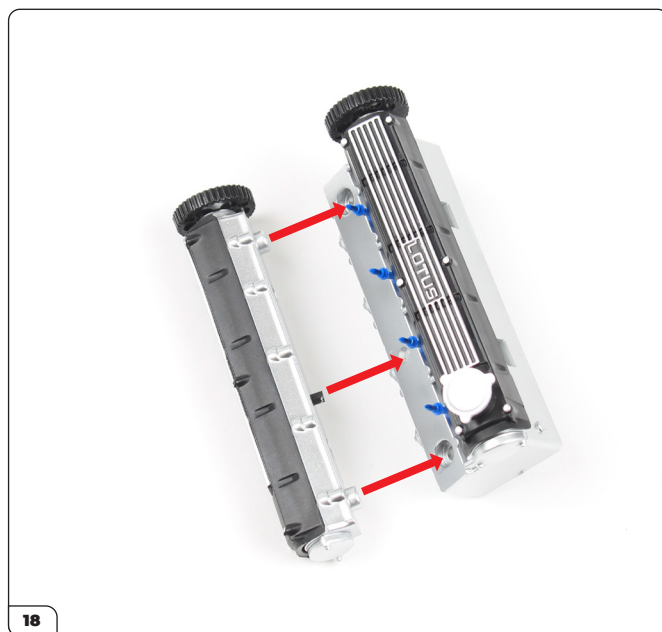
## Stage 003: Constructing the Engine Cylinder Head



Align the right cam cover (with the oil cap) and the engine cylinder head as shown, then fit the cover in place. The position of the black pin means there is only one way the parts can fit together.



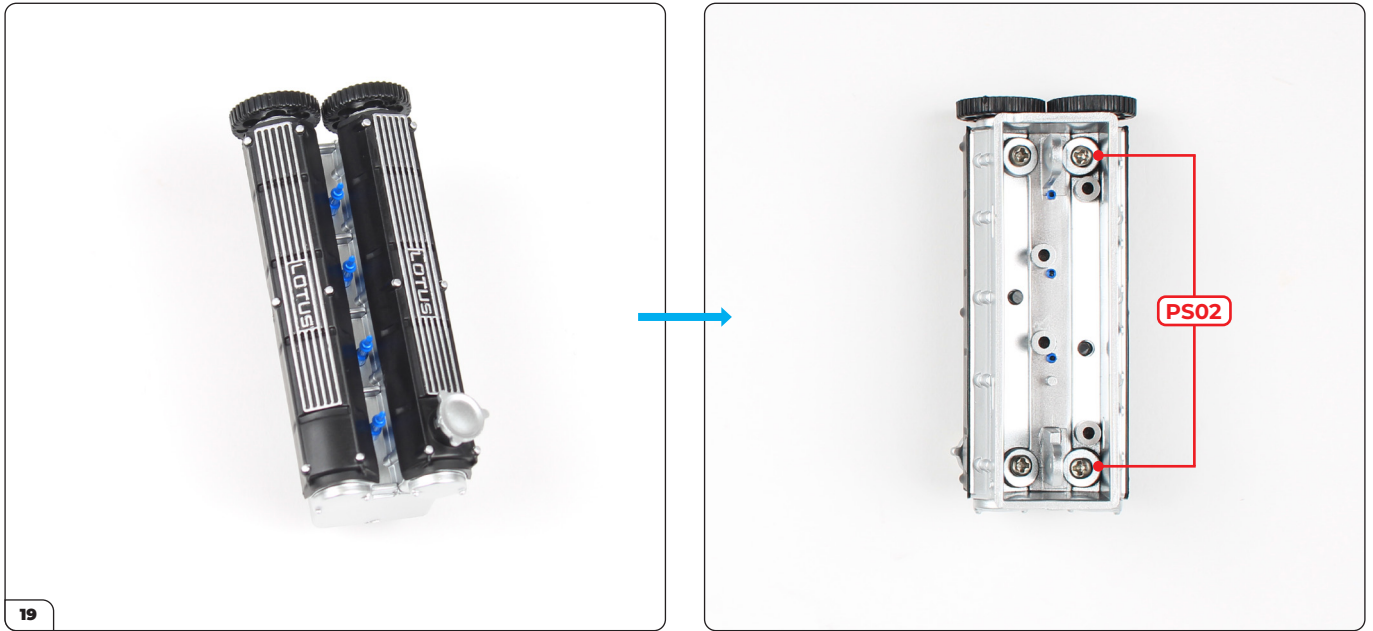
Secure with 2x PS02 screws.



Align the left cam cover and the cylinder head.

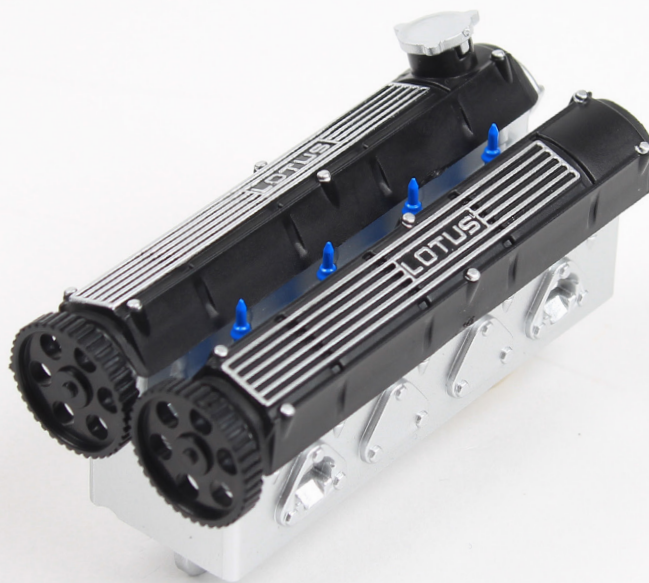


## Stage 003: Constructing the Engine Cylinder Head



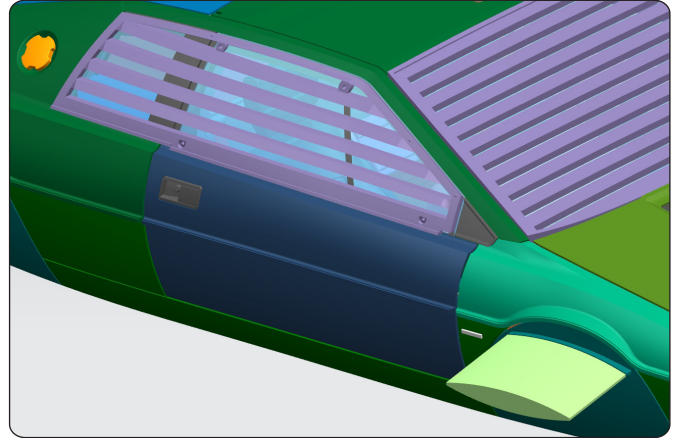
Fit the cover in place then secure using 2x PS02 screws.

**STAGE COMPLETE**



# Stage 004: Fitting the Right Door Handle, Lock Mechanism, Hinge, and Window

Over the next three stages you'll assemble the right door. First you'll fit the door handle, build the lock mechanism, fix the hinge, then attach the window.



## STAGE 004 PARTS LIST

Name	Name
4-A Right door	4-G Spring
4-B Right window	4-H Door lock bracket (thick)
4-C Door hinge plate	4-I Door lock bracket (thin)
4-D Door hinge mount	PS02 screws x2
4-E Right door handle	DS05 screws x4
4-F Door lock	DS23 screws x5





## Stage 004: Fitting the Right Door Handle, Lock Mechanism, Hinge, and Window

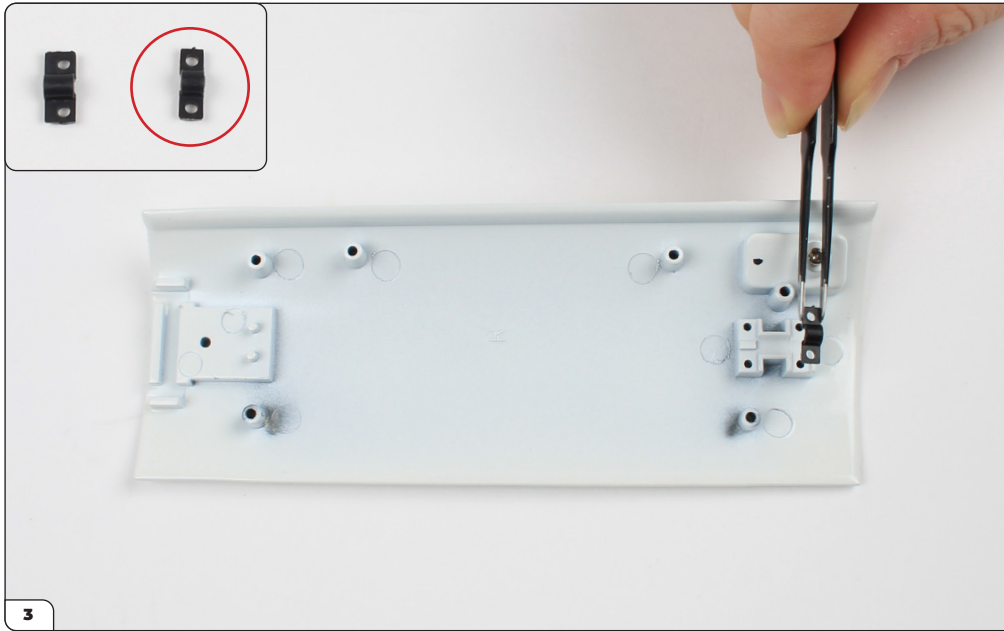


Take the right door (4-A) and fit the handle (4-E) into the recess.



Secure with a PS02 screw.

## Stage 004: Fitting the Right Door Handle, Lock Mechanism, Hinge, and Window

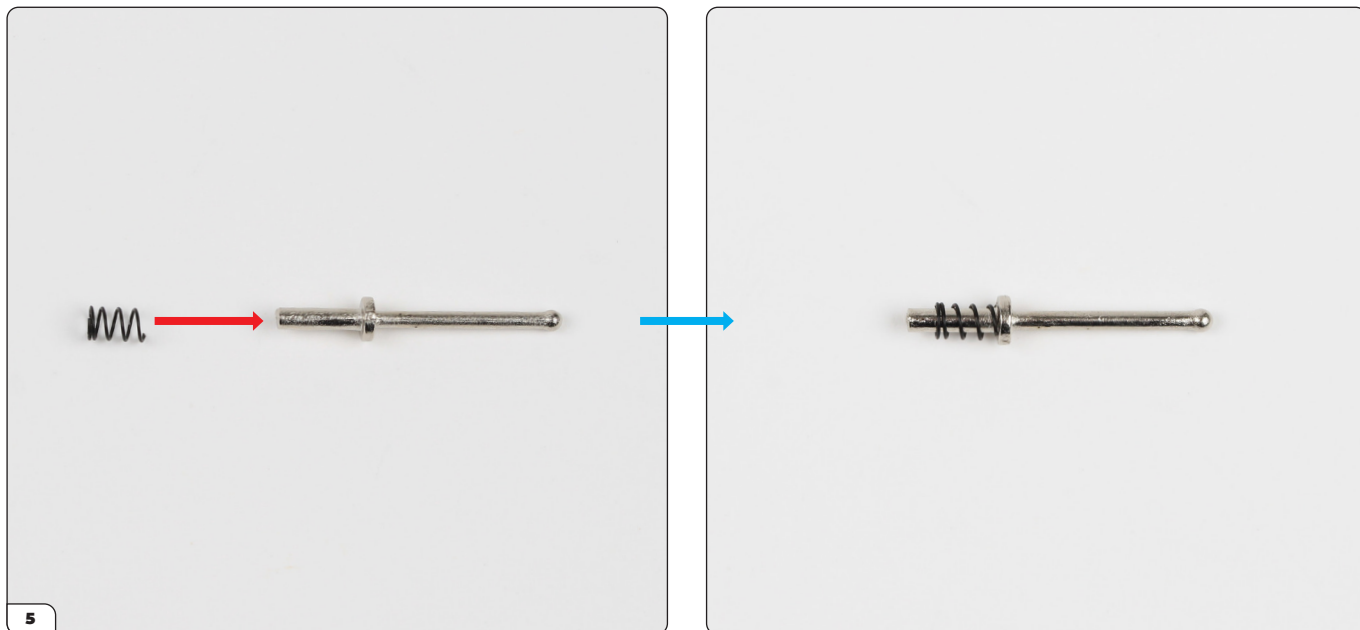


Fit the thin door lock bracket (4-I, circled) in place as shown.

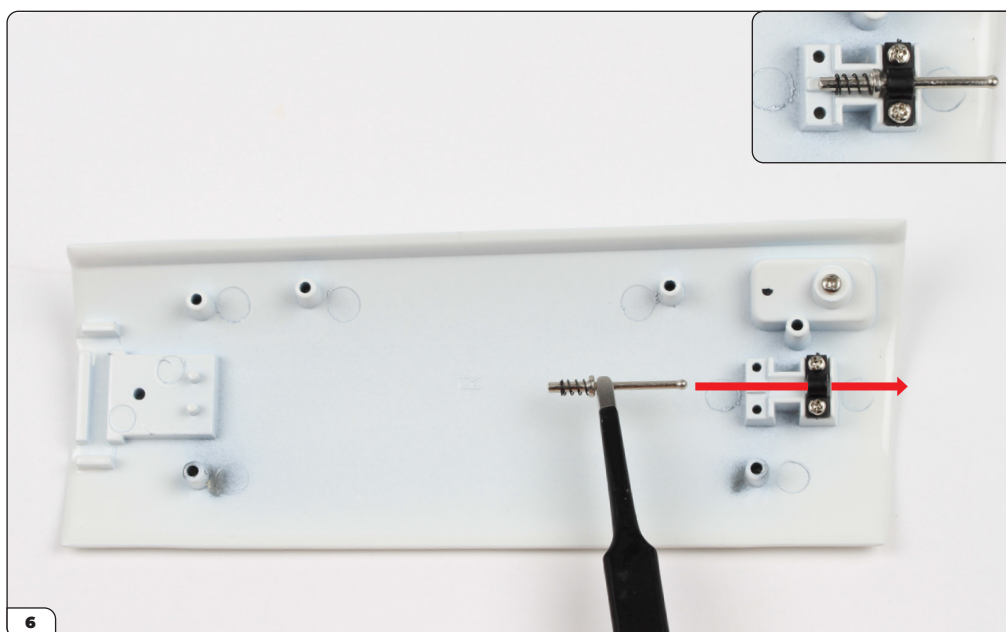


Secure with 2x DS23 screws.

## Stage 004: Fitting the Right Door Handle, Lock Mechanism, Hinge, and Window

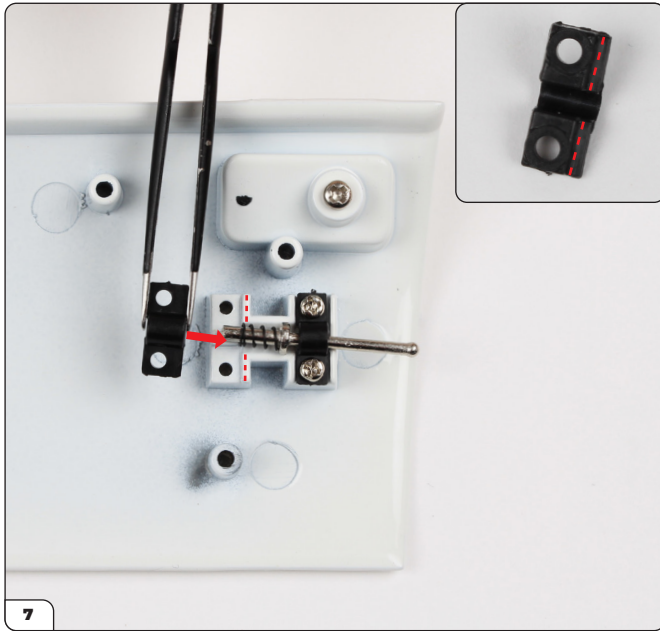


Fit the spring (4-G) onto the thicker end of the door lock (4-F).

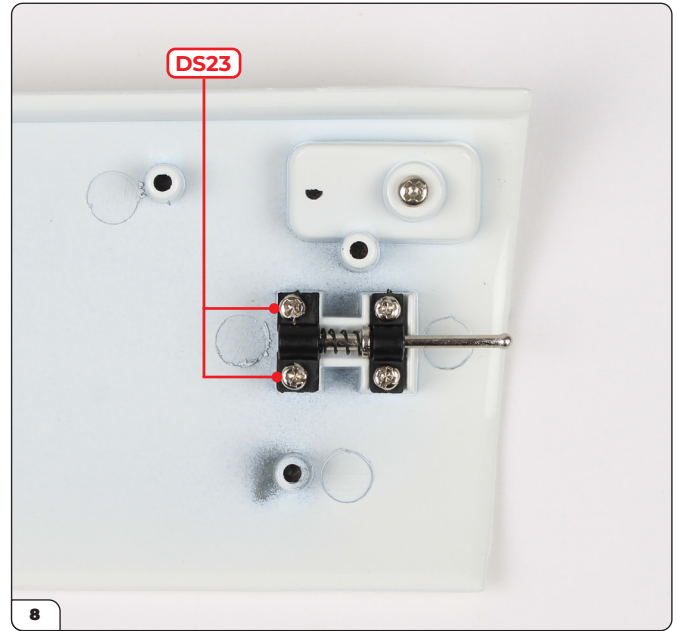


Fit the ball end of the lock through the thin bracket.

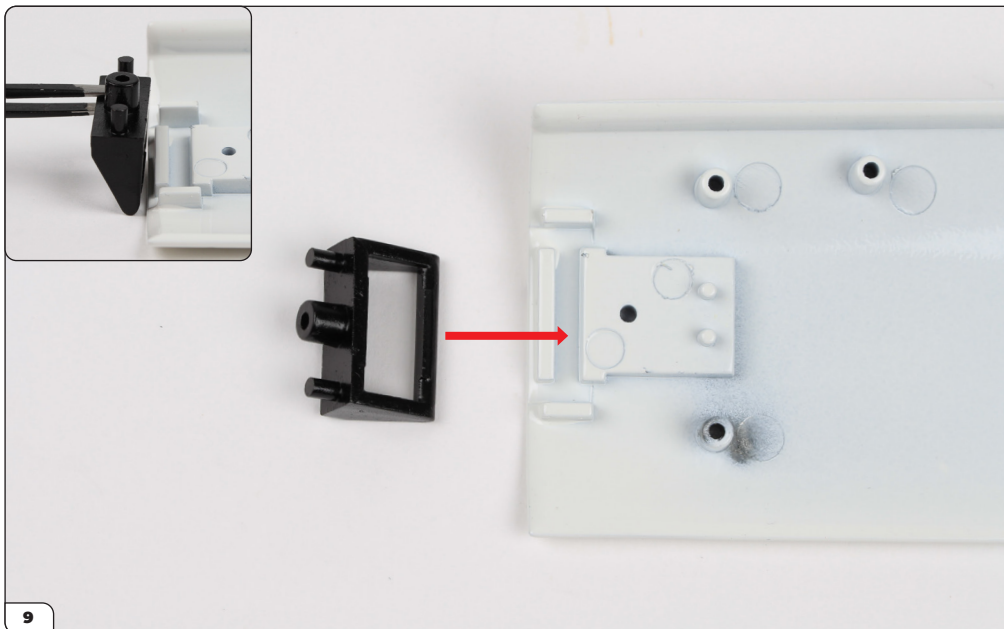
## Stage 004: Fitting the Right Door Handle, Lock Mechanism, Hinge, and Window



Fit the thick bracket over the door lock. Note there is a recess on the bracket that fits over the ridge of the door as indicated by the dashed lines.



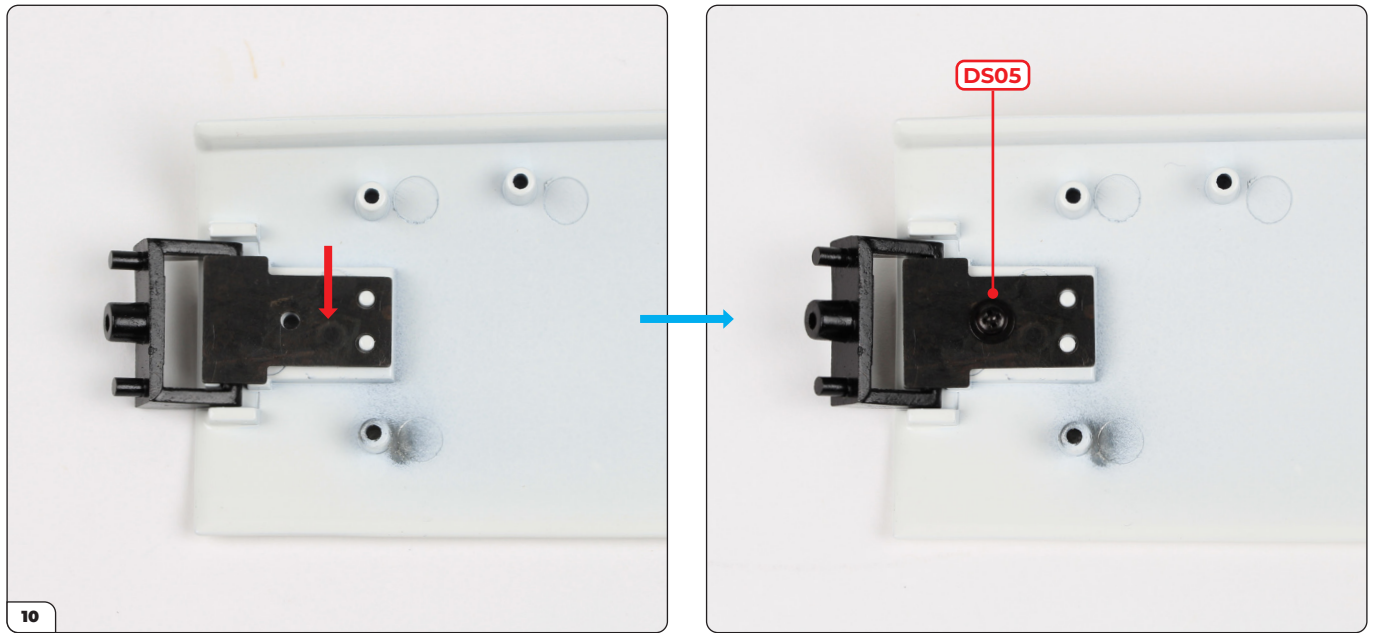
Secure with 2x DS23 screws.



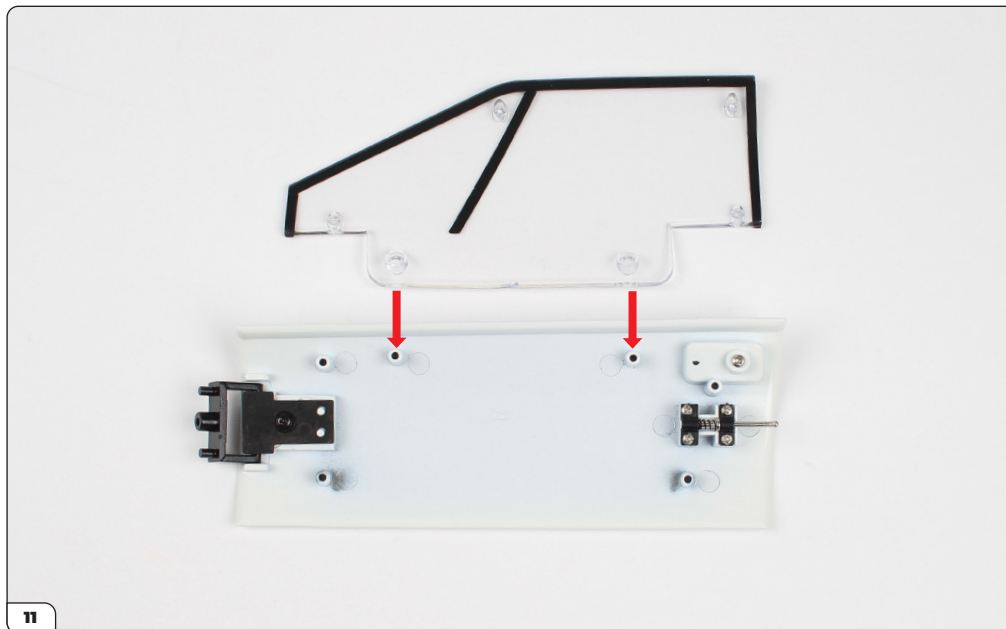
Fit the door hinge mount (4-D) into the recess as shown. Make sure the mount is oriented as shown in the inset image.



## Stage 004: Fitting the Right Door Handle, Lock Mechanism, Hinge, and Window



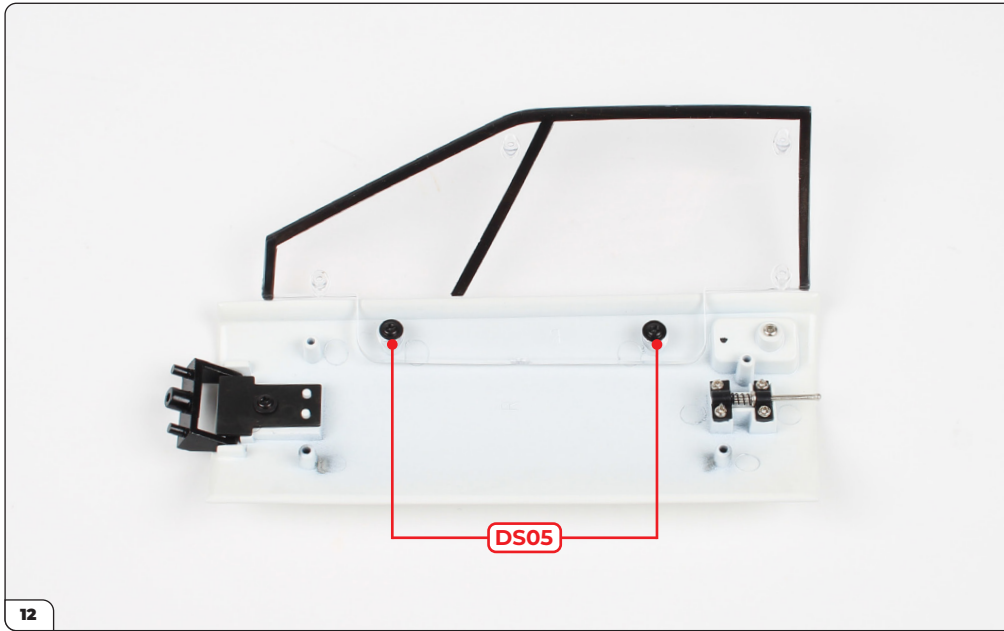
Fit the door hinge plate over the mount then secure in place using a DS05 screw.



Align the right window with the assembly as shown.



## Stage 004: Fitting the Right Door Handle, Lock Mechanism, Hinge, and Window

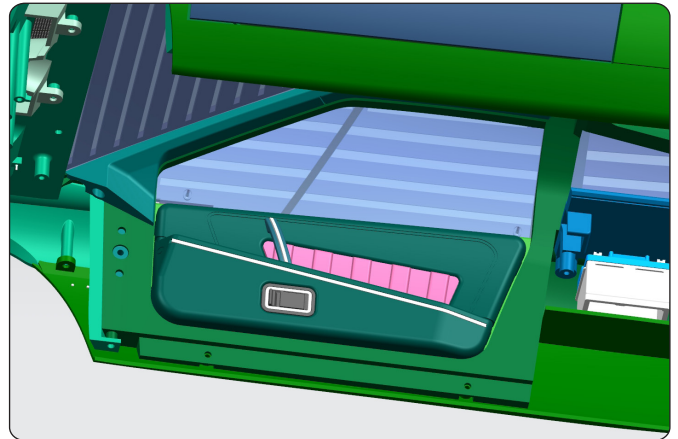


Fit the window and secure using 2x DS05 screws.



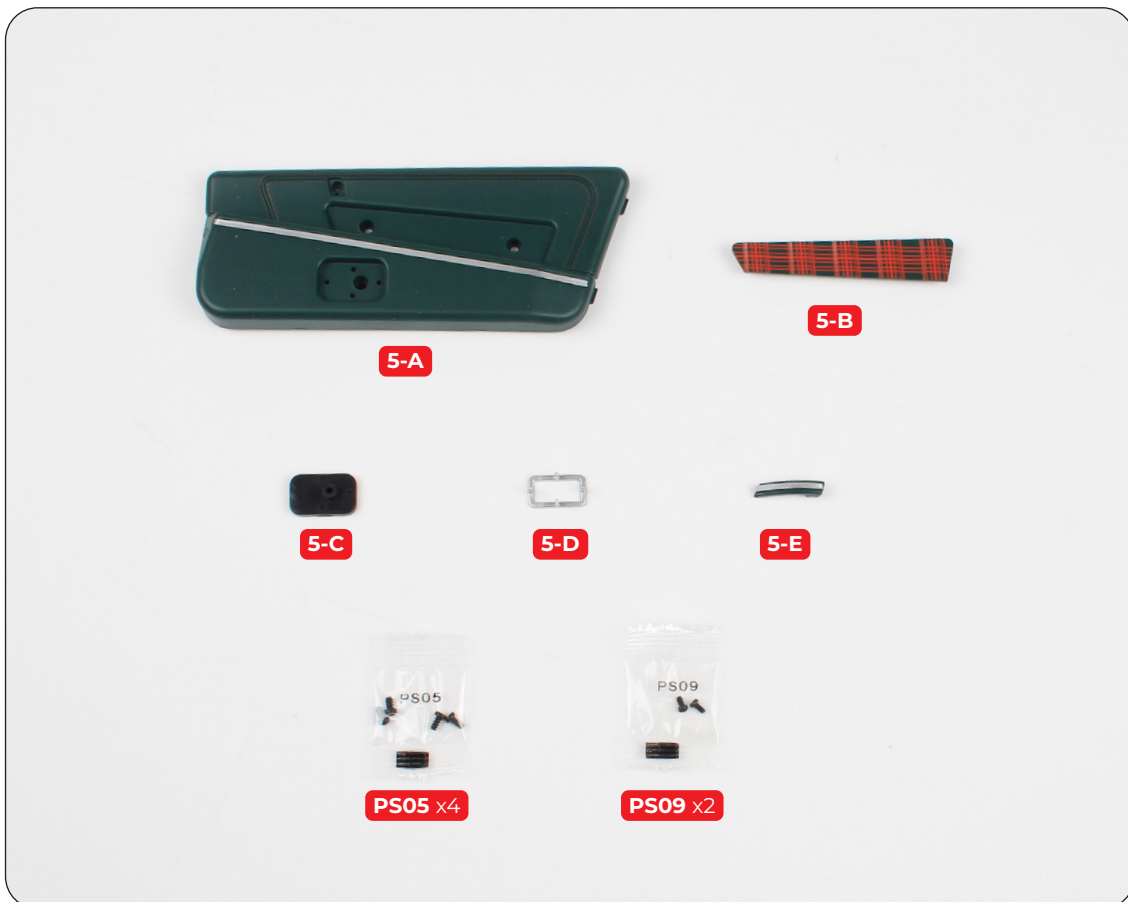
# Stage 005: Building the Right Door Interior Panel

In this stage you'll assemble the interior panel for the door by fixing the frame and handles in place.

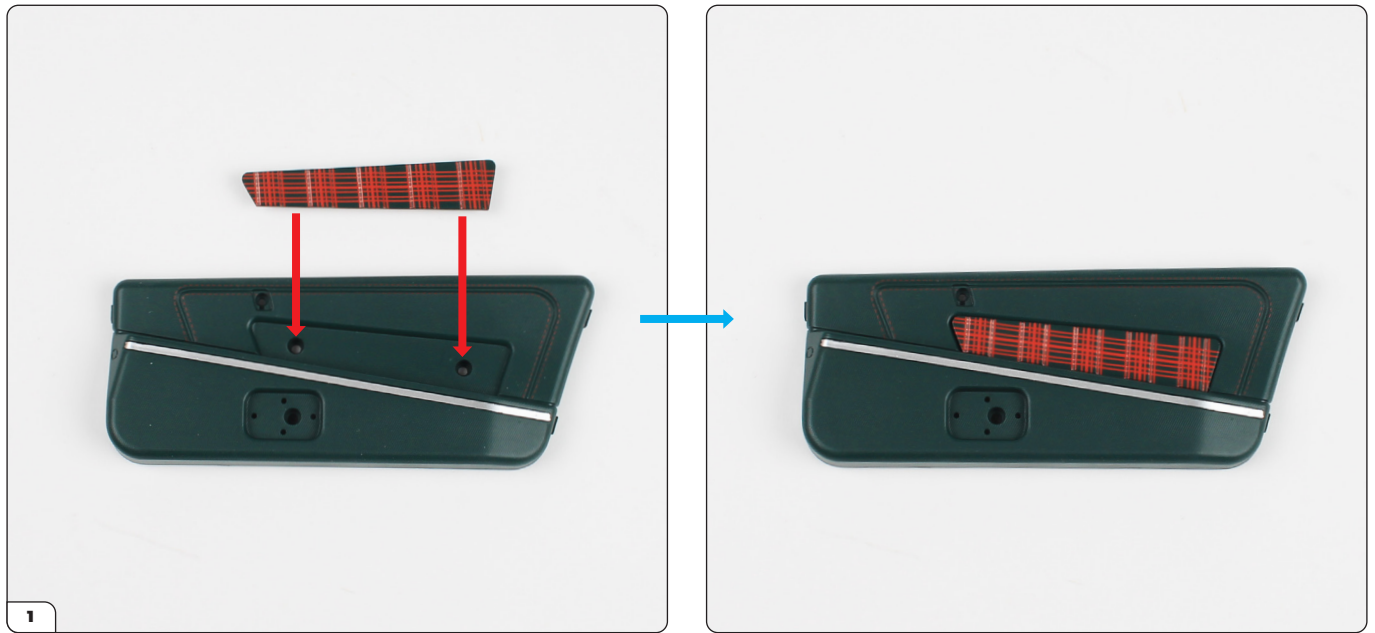


## STAGE 005 PARTS LIST

Name	Name
5-A Right interior panel	5-E Right door pull handle
5-B Right trim panel	PS05 screws x4
5-C Right door handle	PS09 screws x2
5-D Right door handle frame	



## Stage 005: Building the Right Door Interior Panel

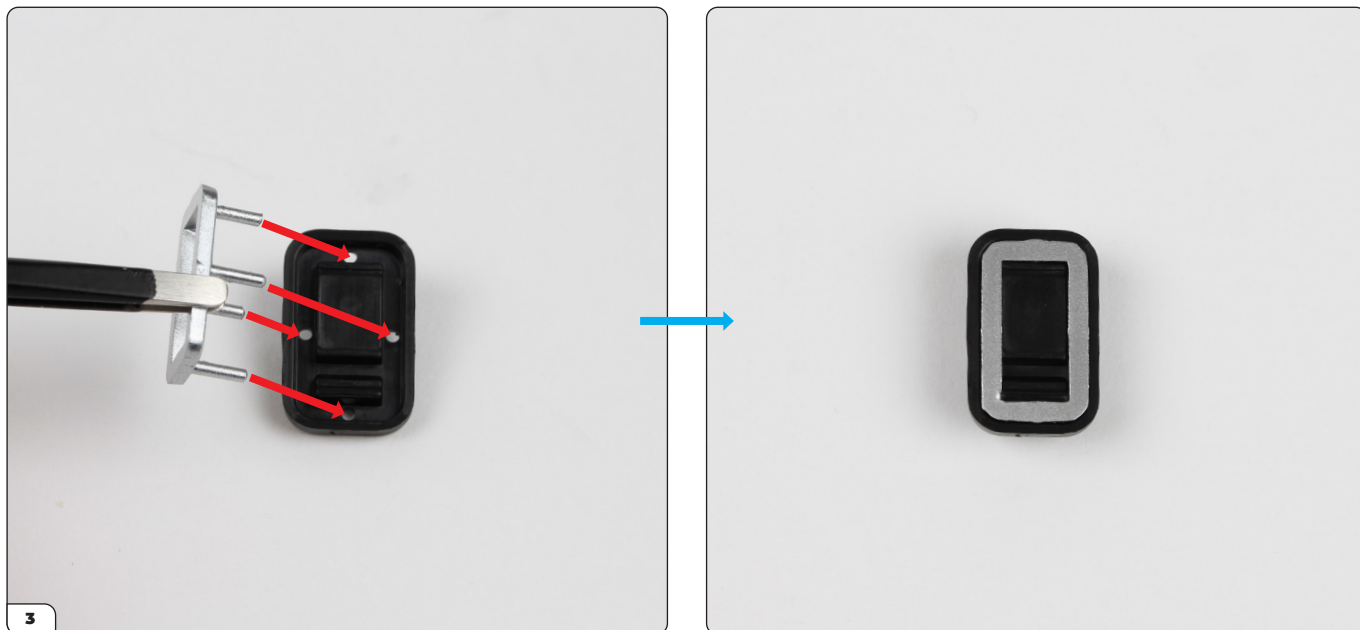


Take the right interior panel (5-A) and fit the right trim panel (5-B) in place.



Secure with 2x PS05 screws.

## Stage 005: Building the Right Door Interior Panel



Fit the right door handle (5-C) and frame (5-D) together by pushing the pins into the holes. Press firmly until the frame is flush inside the recess.



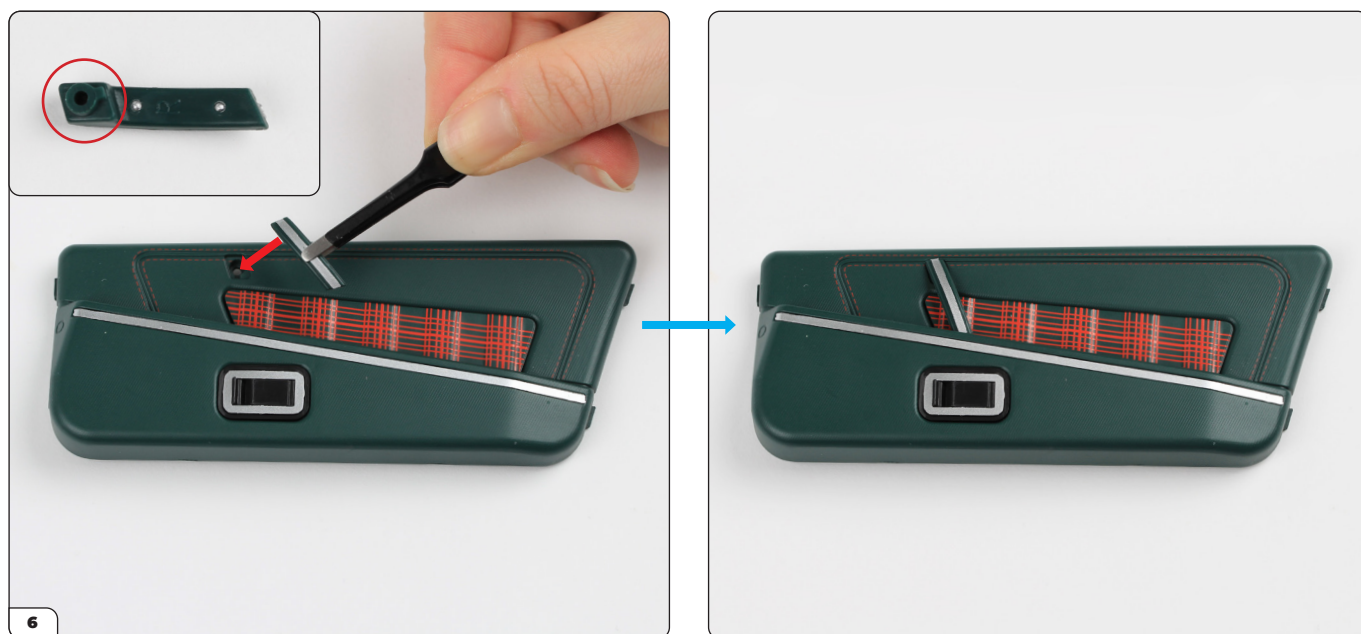
Fit the door handle into the interior panel as shown.



## Stage 005: Building the Right Door Interior Panel



Secure using a PS05 screw.



Fit the right pull handle (5-E) in place using its shaped plug (circled) as a guide.

## Stage 005: Building the Right Door Interior Panel

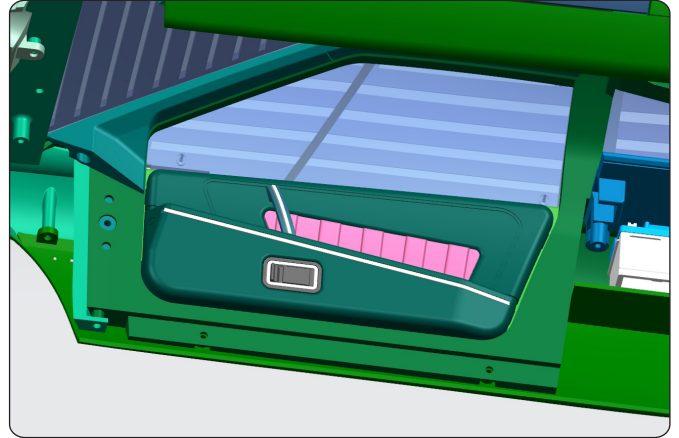


Secure using a PS09 screw.



## Stage 006: Assembling the Right Door

To finish building the right door, you'll fix the interior frame and door lock receiver, then attach the assemblies from stages 004 and 005.

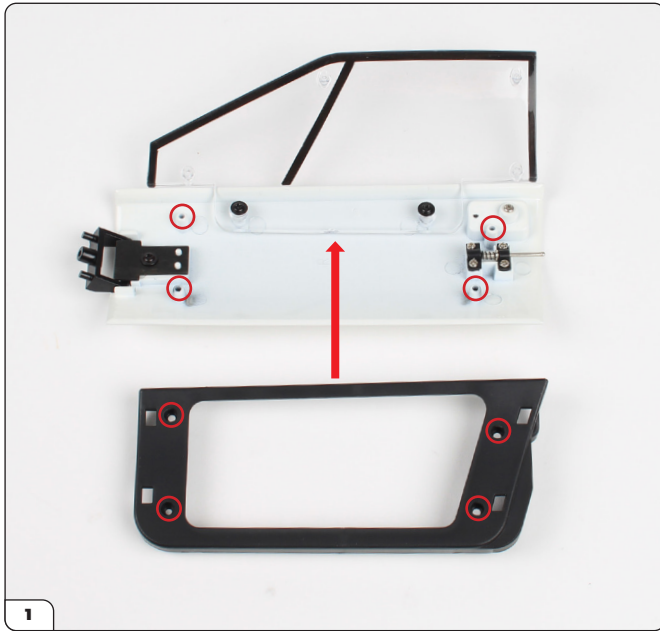


### STAGE 006 PARTS LIST

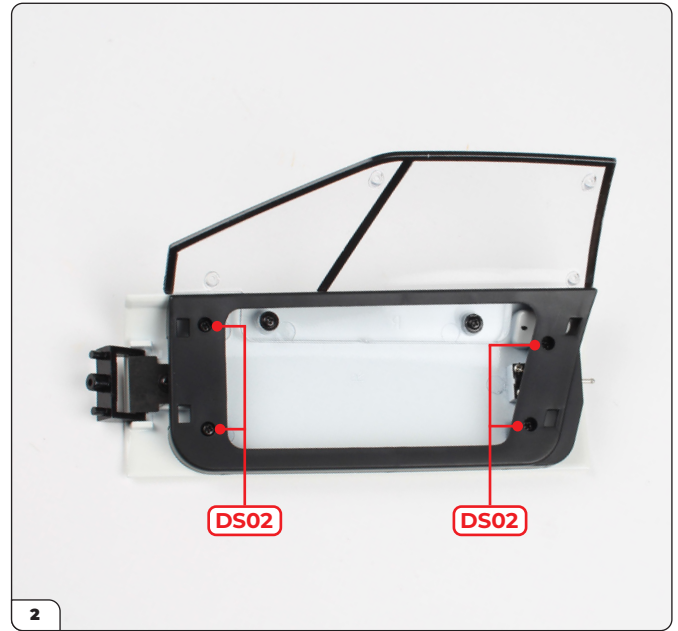
Name
6-A Right door interior frame
6-B Right door lock
PS01 screws x2
DS02 screws x5



## Stage 006: Assembling the Right Door



Take the door assembly from Stage 004 and align the right door interior frame (6-A) with it, then fit the screw holes over the posts (circled).



Secure with 4x DS02 screws.



Position the right door lock (6-B) in place, pressing its pins into the holes. At the same time, fit the U-shaped opening under the protruding pin (circled).



Secure using a PS01 screw.



## Stage 006: Assembling the Right Door



Attach the interior panel (stage 005) to the frame by fitting the tabs into the slots then pressing firmly on the opposite end until it clicks in place.

