

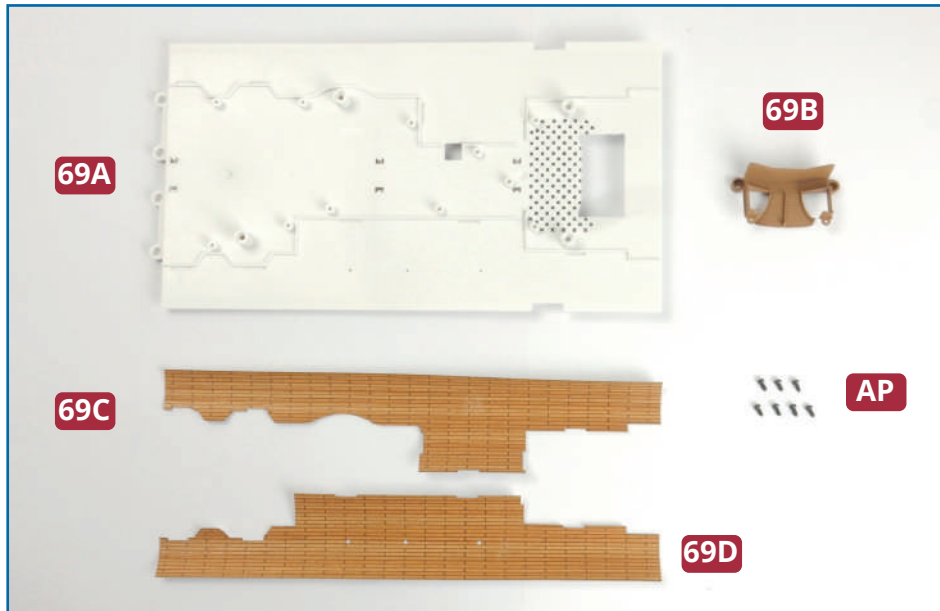
# TITANIC

THE SHIP • THE LEGEND

Pack 13

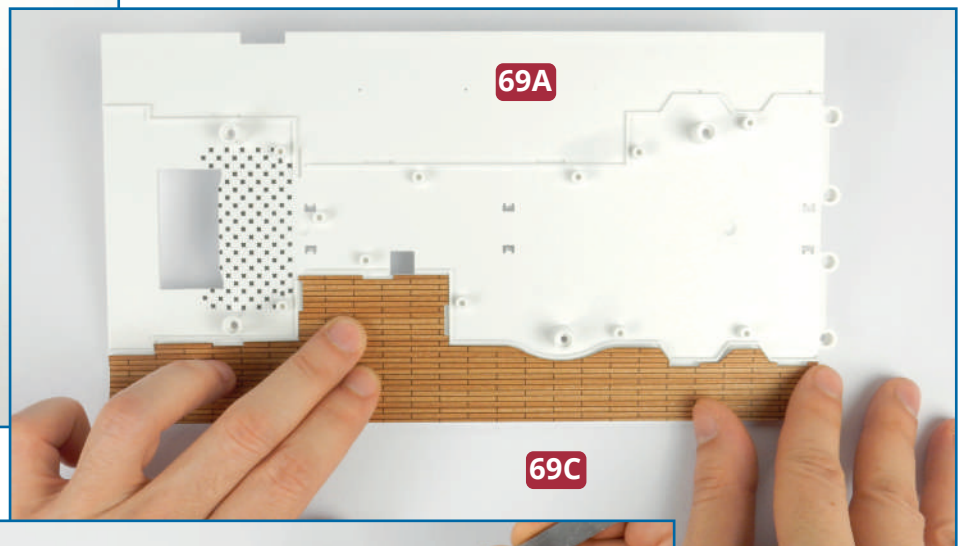
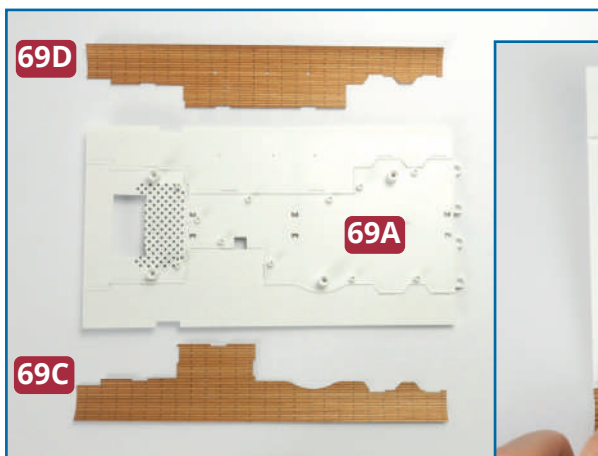


# SECOND SECTION OF THE PROMENADE DECK

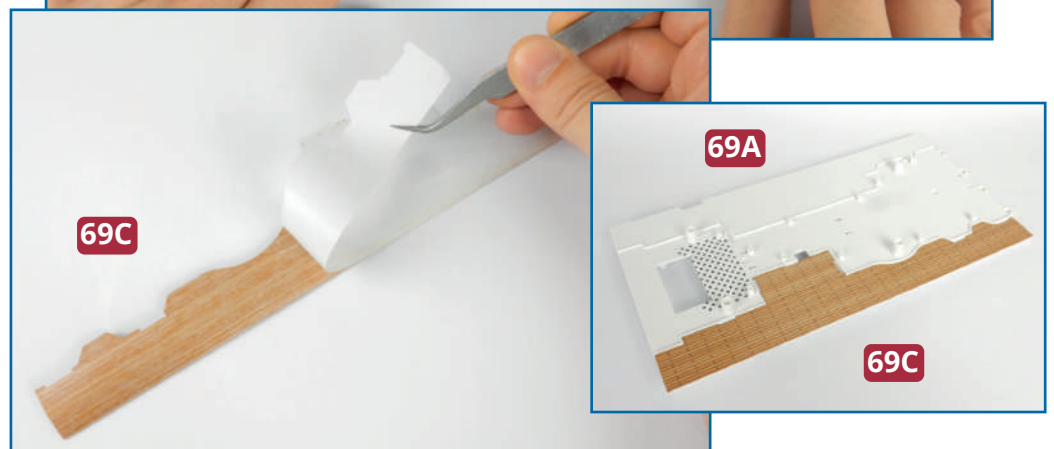


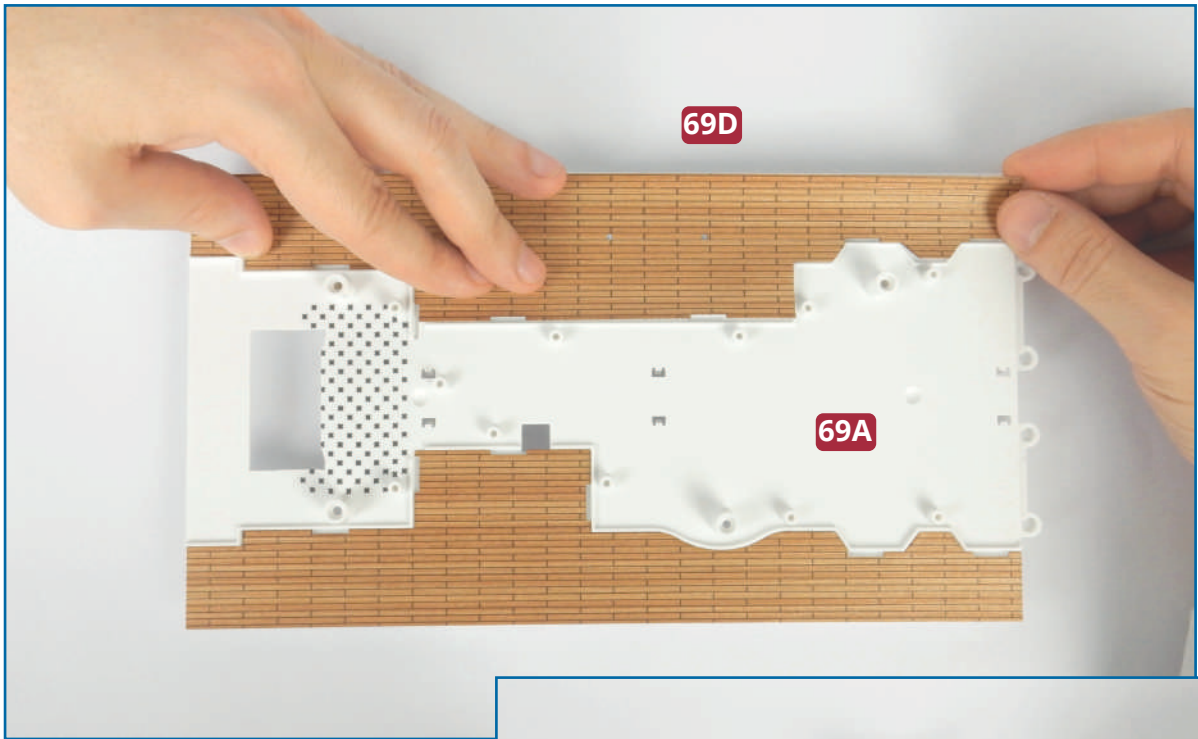
## PARTS IN THIS ISSUE

- 69A** Second section of the promenade deck
- 69B** First-class staircase
- 69C** Decking for port side
- 69D** Decking for starboard side
- AP** Seven 2.3 x 5mm PB screws (1 spare)

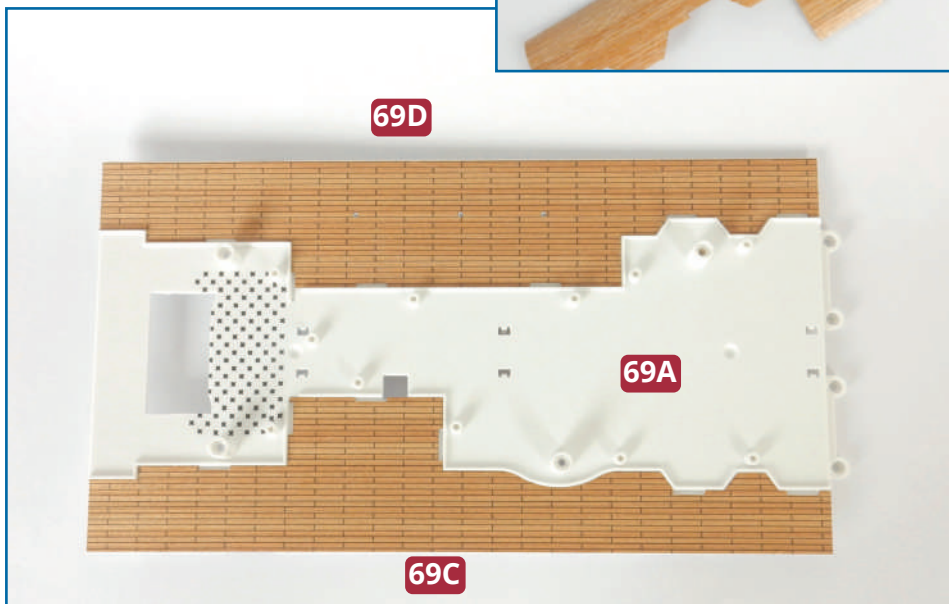


**1** Take the section of the promenade deck **69A** and the two decking panels **69C** and **69D**. Check how the port decking **69C** fits on the deck **69A**, then remove the protective backing and fix the decking in place, ensuring all the features are aligned. Smooth the decking down using a soft cloth.

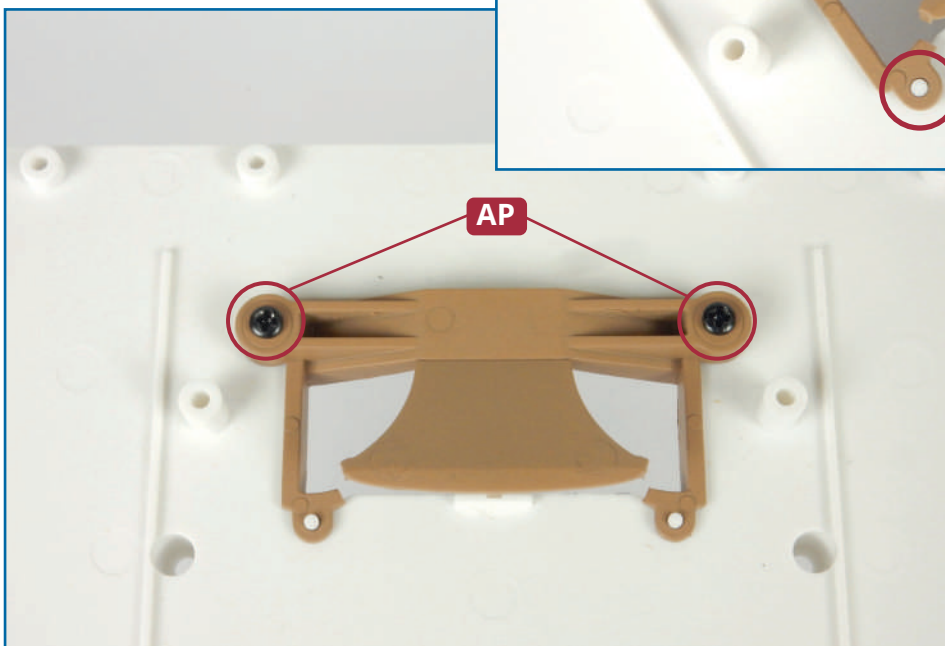
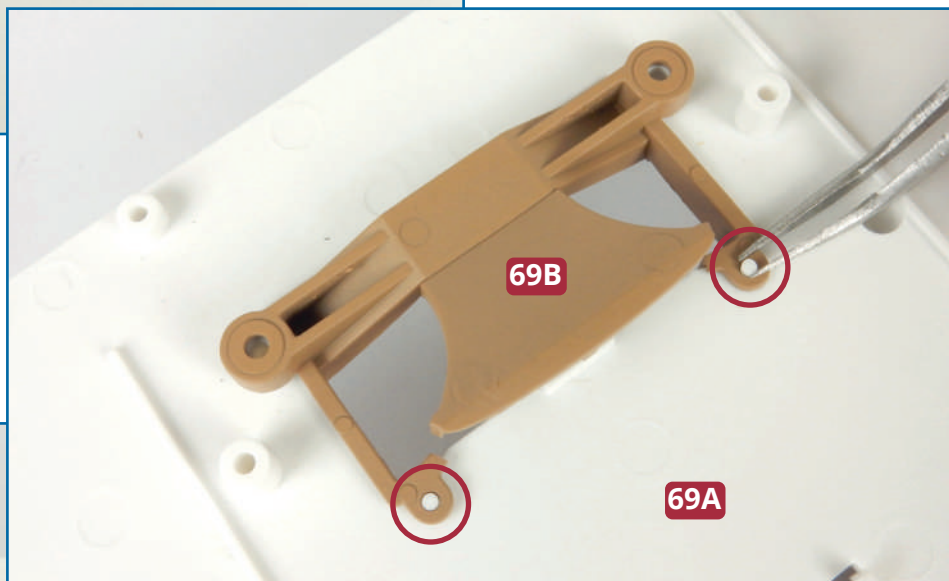
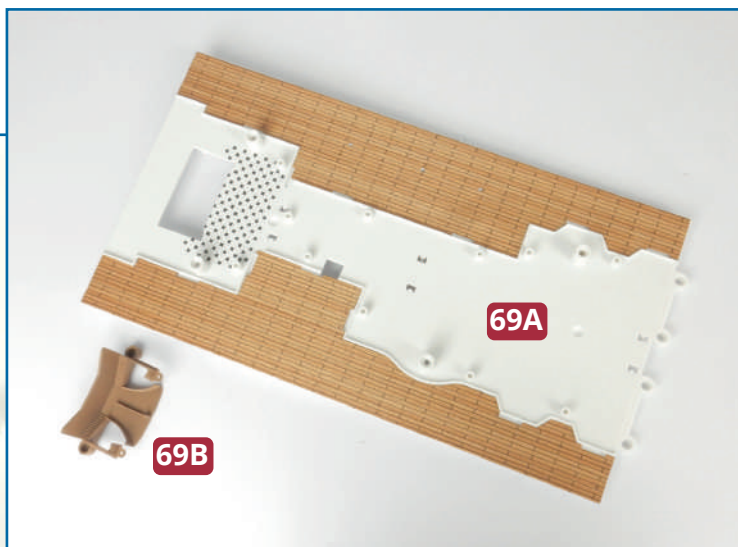
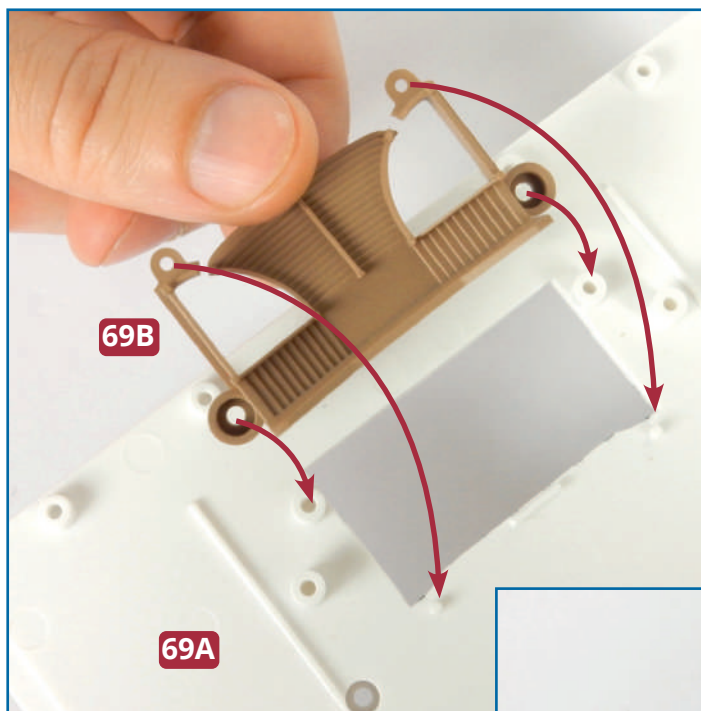




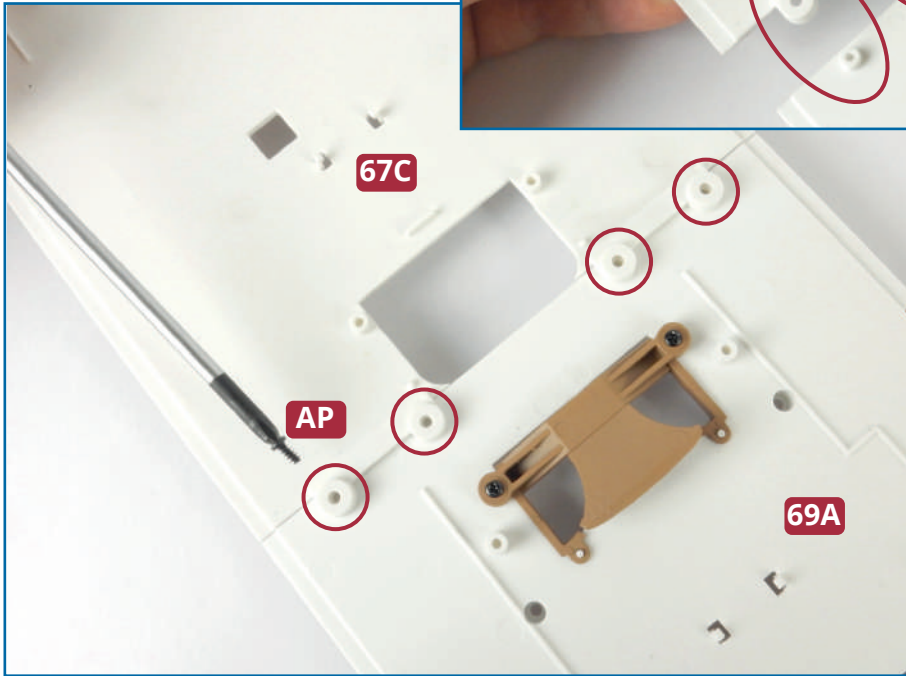
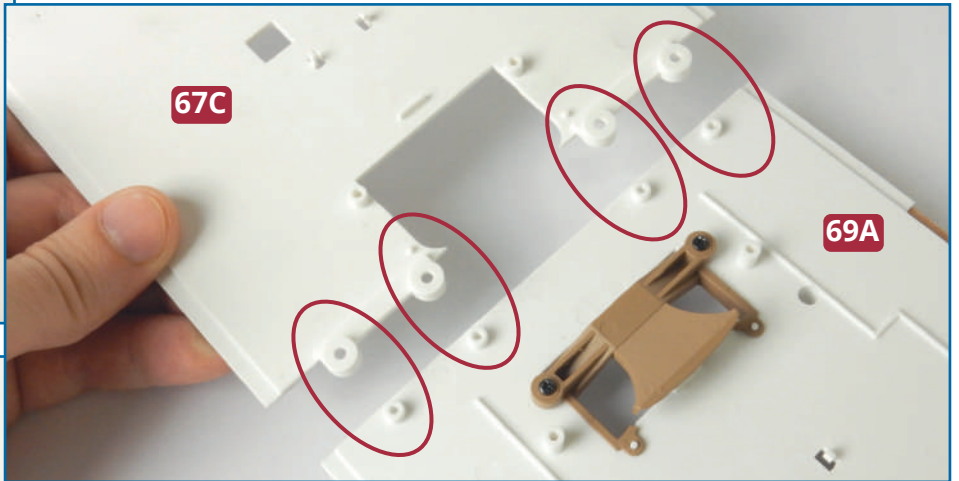
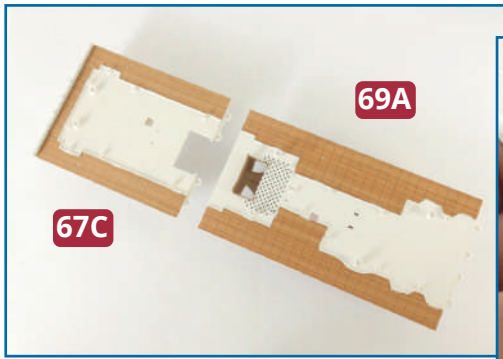
**2** Take the starboard decking **69D**. Check how it fits on the deck **69A**, then remove the protective backing and fix it in place ensuring all the holes are aligned. Smooth the decking down flat using a soft cloth.



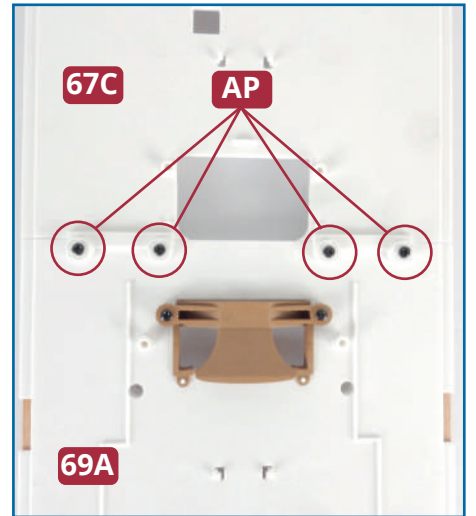
## ★ STEP-BY-STEP INSTRUCTIONS ★



**3** Turn the deck section **69A** over and position the staircase **69B** over the opening, as indicated (top, left). Screw holes in the staircase fit over raised screw sockets, and pegs on the underside of the deck fit into holes in the staircase structure (circled, above). Fix the staircase in place with two **AP** screws as indicated, left.

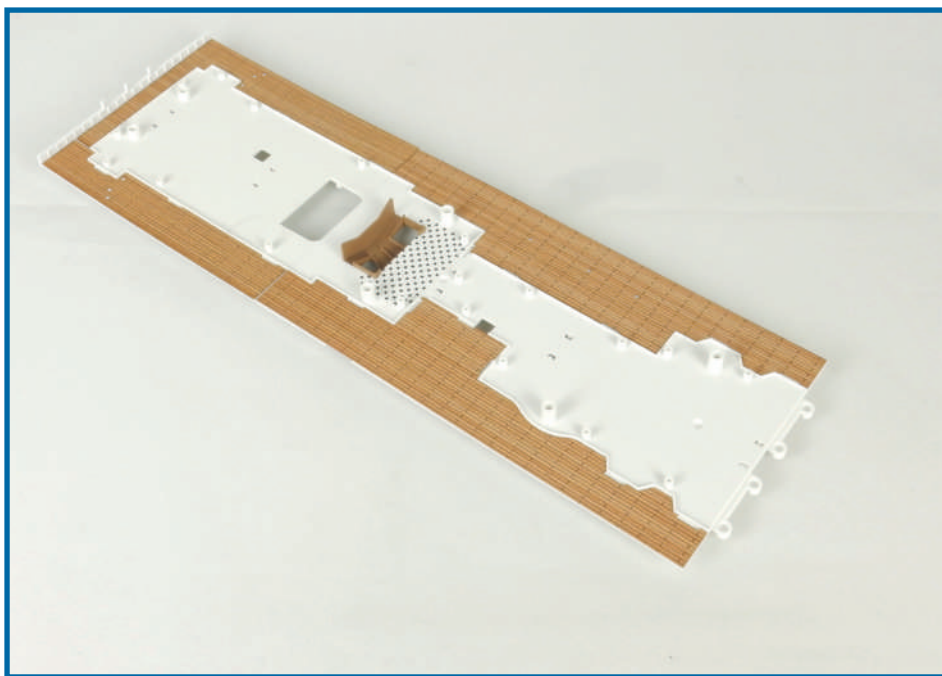


**4** Take the two sections of the promenade deck **67C** and **69A** and check how they fit together: four screw holes on part **67C** fit over raised screw sockets on part **69A**. Fix the parts together with four **AP** screws.



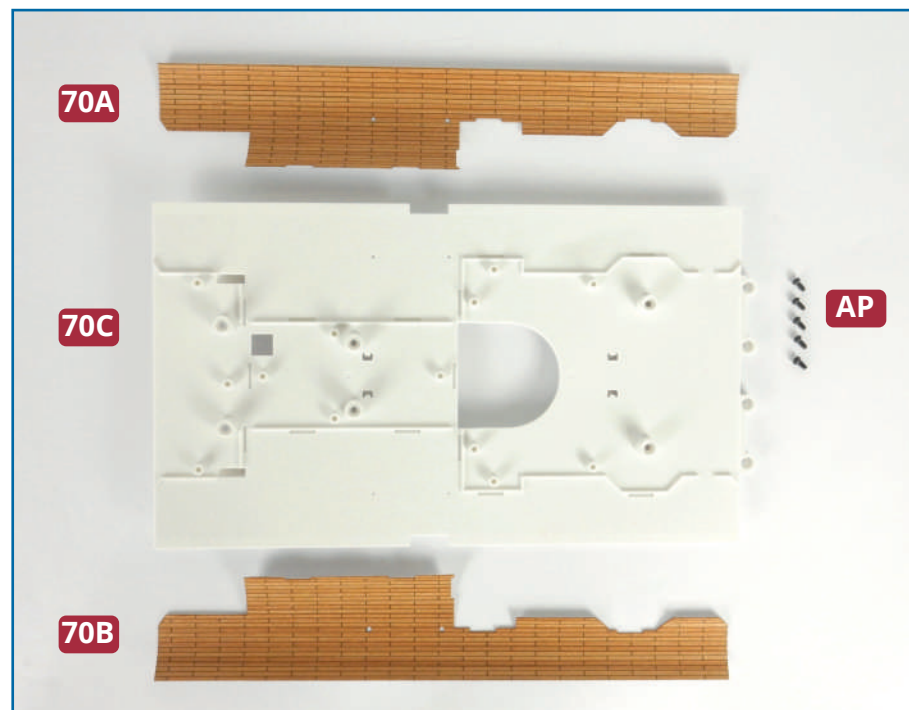
### Completed work

More decking and a staircase have been fitted to the second section of the promenade deck, and the two sections of deck have been joined together.





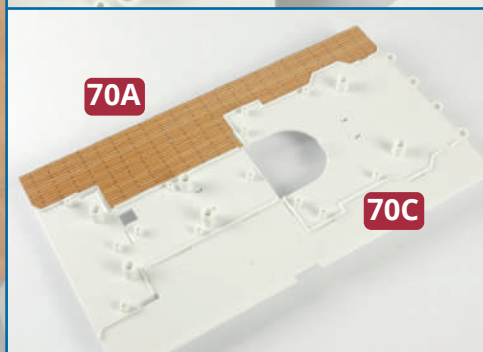
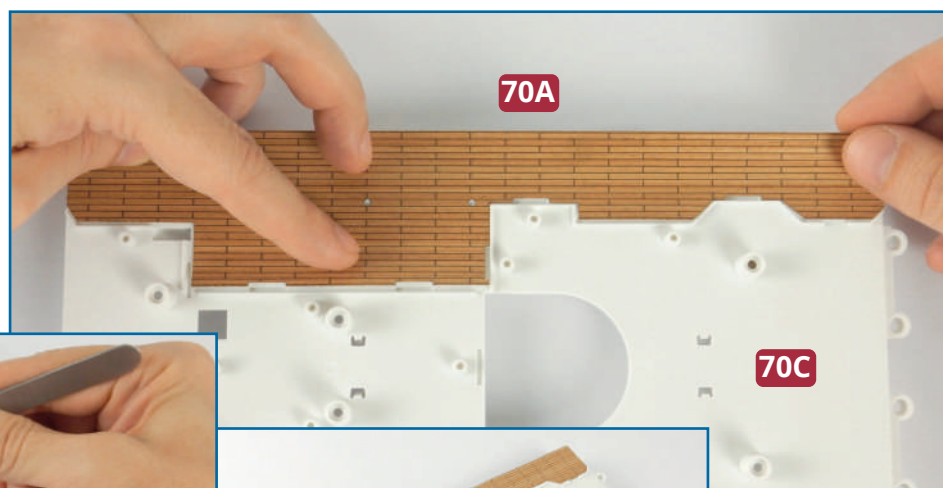
# THIRD SECTION OF THE PROMENADE DECK

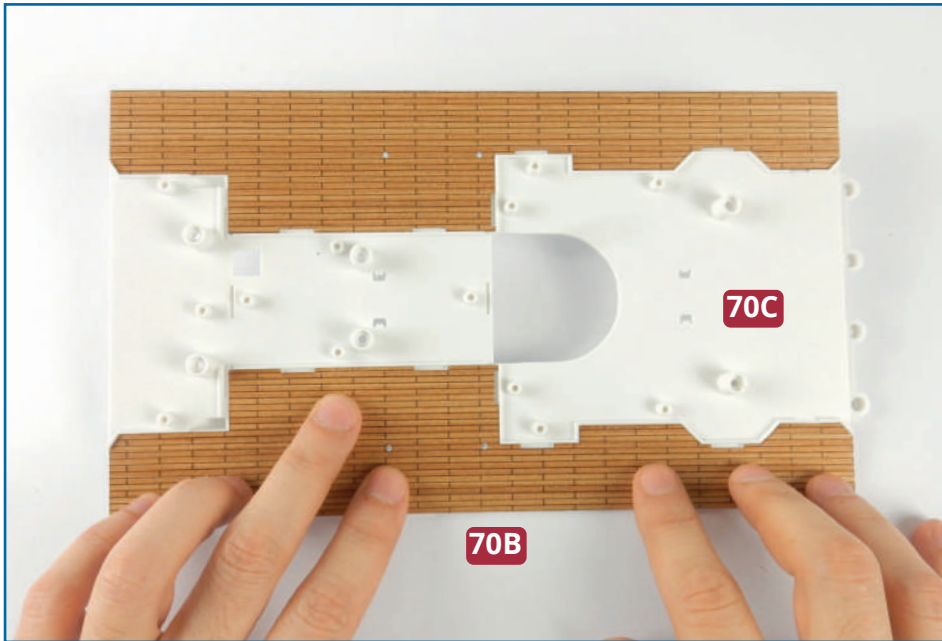


## PARTS IN THIS ISSUE

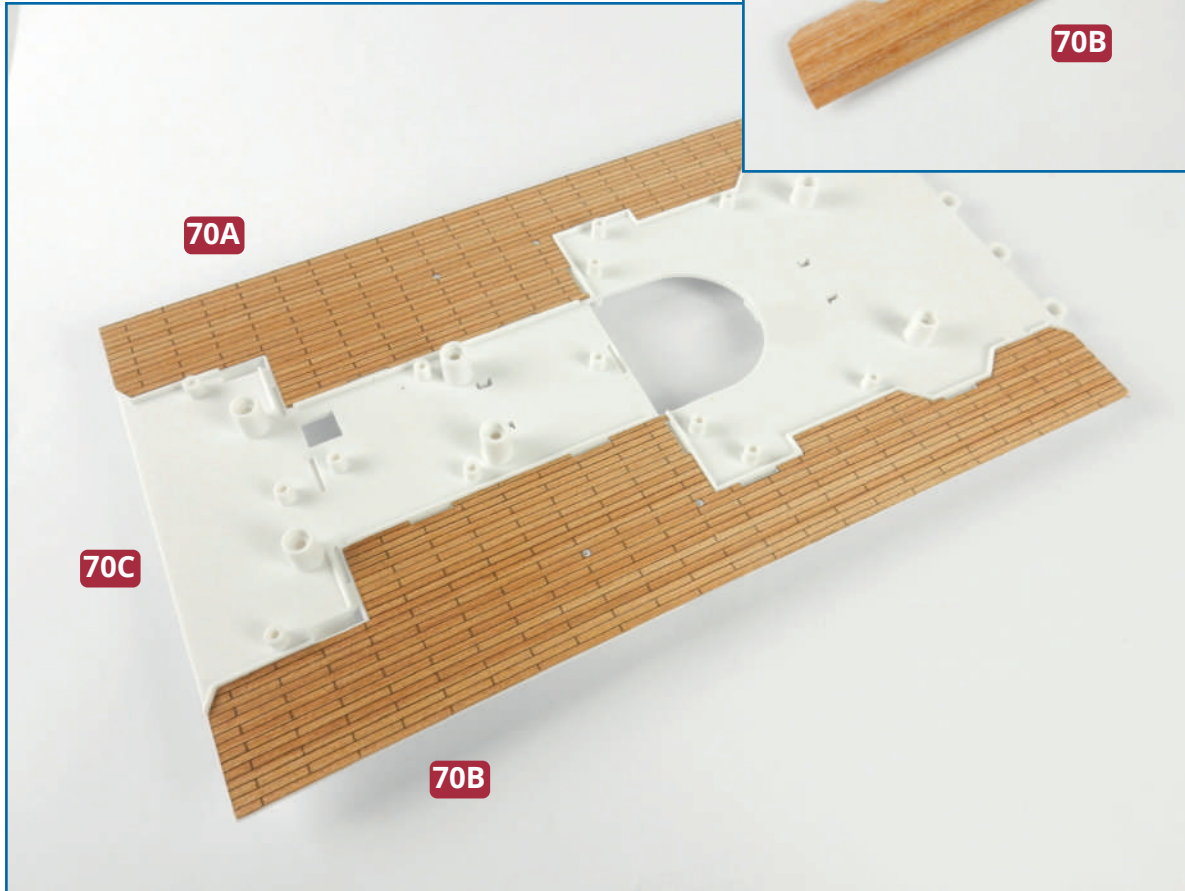
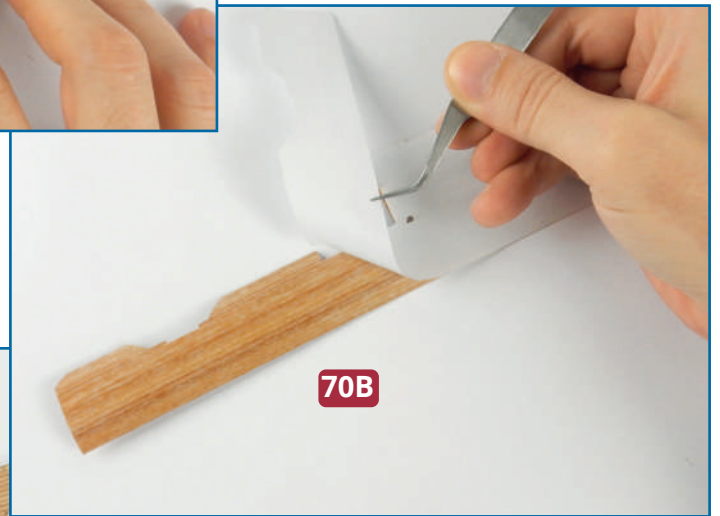
- 70A** Decking for starboard side
- 70B** Decking for port side
- 70C** Third section of promenade deck
- AP** Five 2.3 x 5mm PB screws (1 spare)

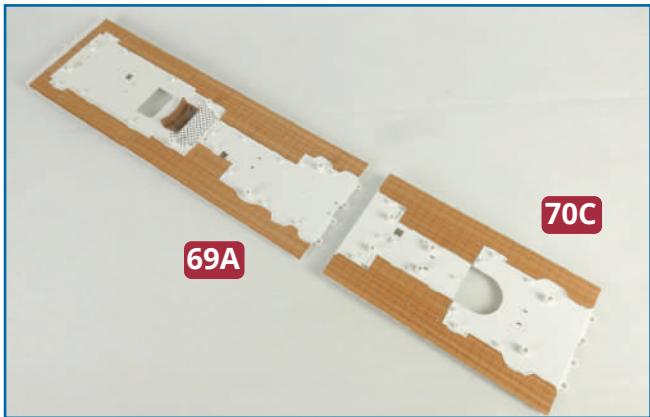
**1** Take the third section of the promenade deck **70C** and the starboard decking **70A**. Check how the decking fits on the deck, then remove the protective backing and fix the decking in place, ensuring that all the features are aligned.



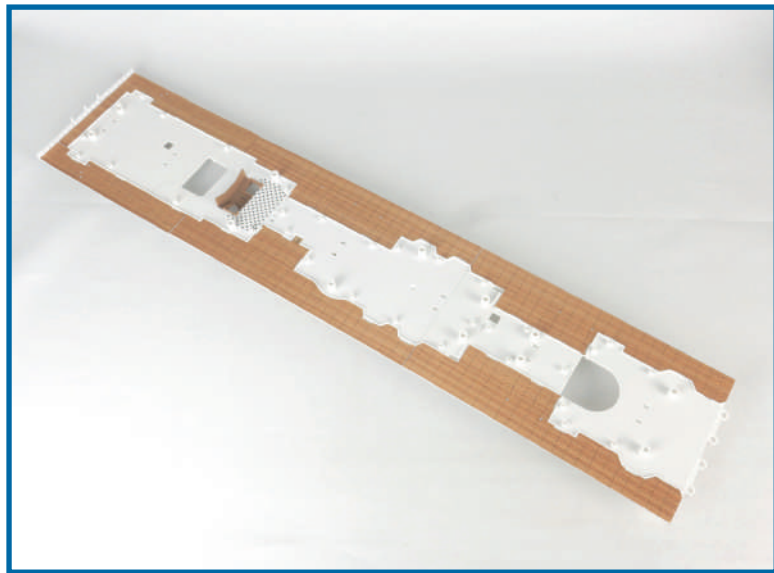
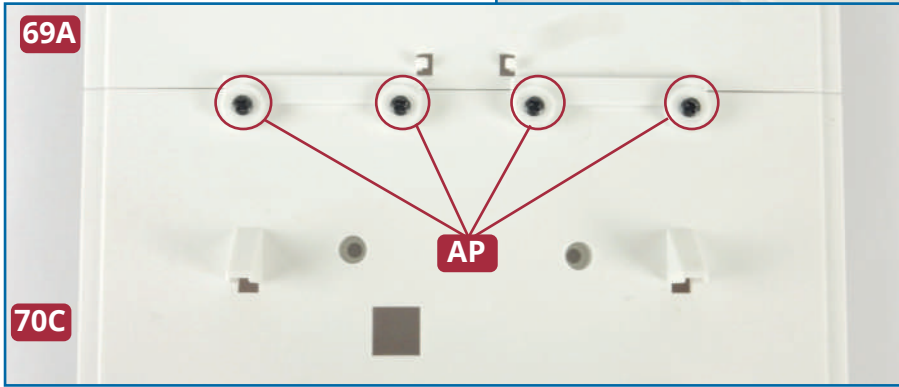
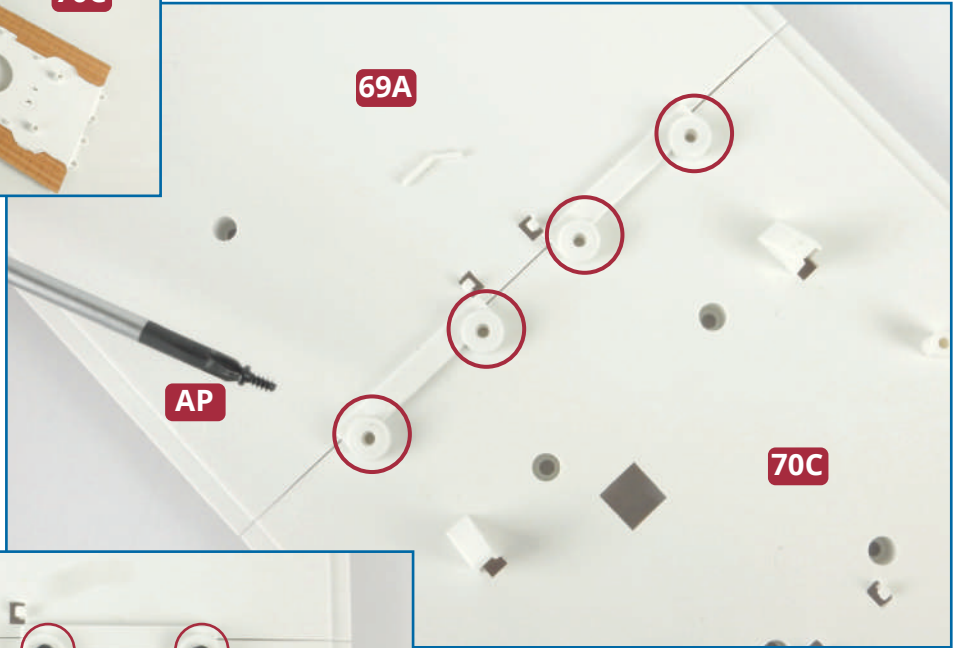


**2** Take the port decking **70B** and check how it fits on the deck **70C**. Then remove the protective backing and fix the decking in place, ensuring all the features are aligned. Smooth the decking panels down with a soft cloth.





**3** Take the promenade deck assembly from the previous issue and check how the third section of the deck **70C** fits against the aft of the second section **69A**. Turn the assembly over and with the screw holes aligned, fix it in place with four **AP** screws.

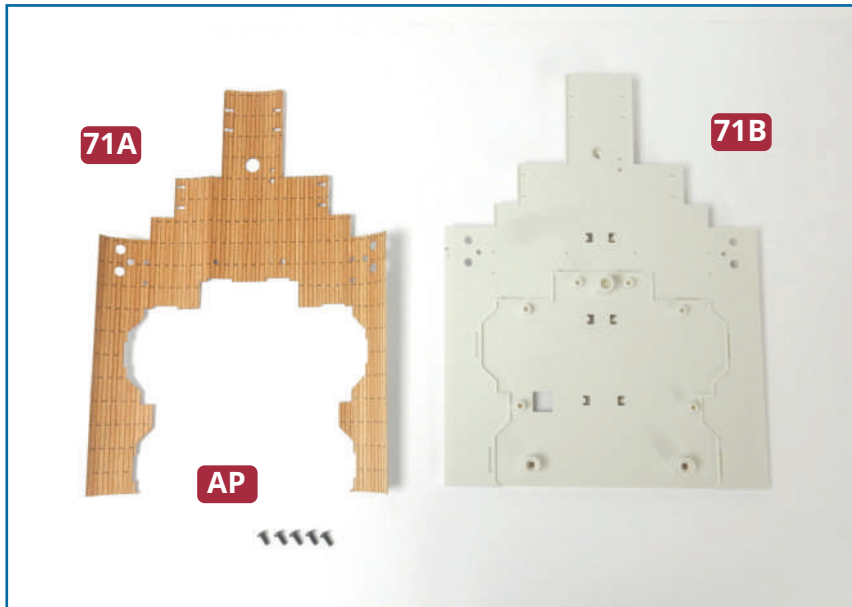


### Completed work

Three sections of the promenade deck have now been assembled.



# FOURTH SECTION OF THE PROMENADE DECK

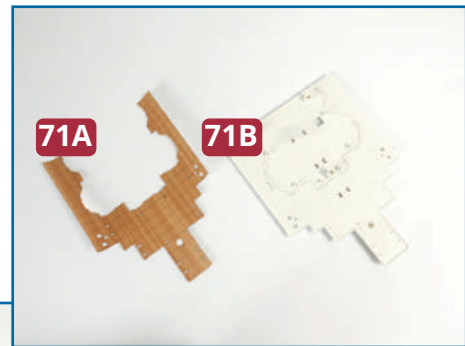


## PARTS IN THIS ISSUE

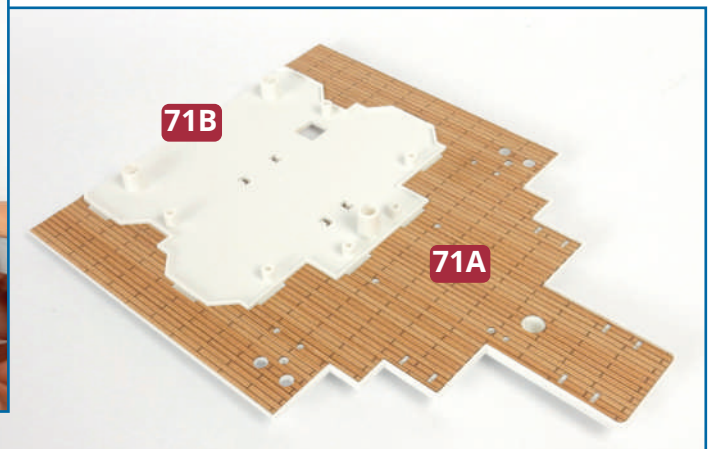
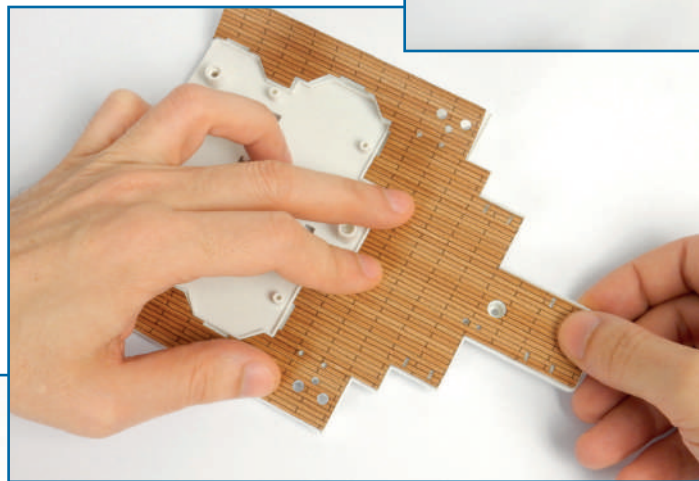
**71A** Decking

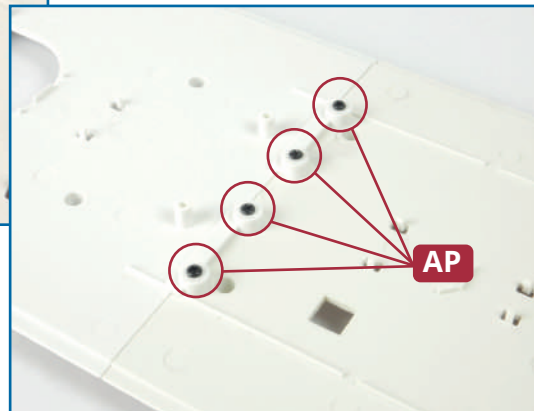
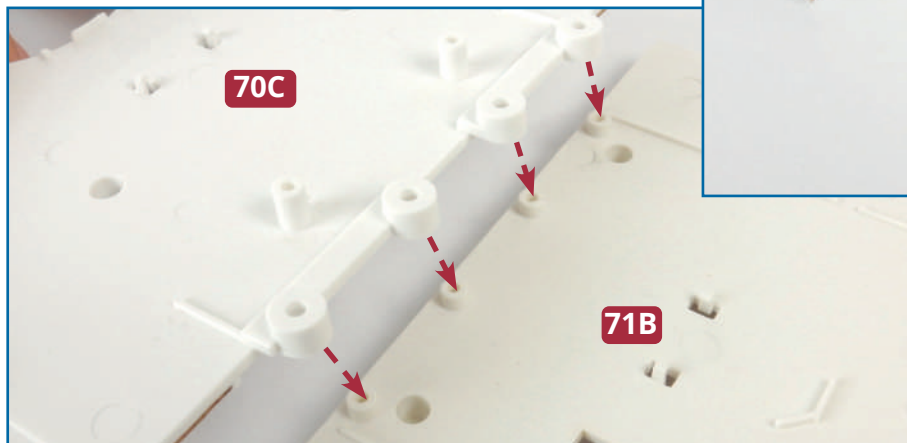
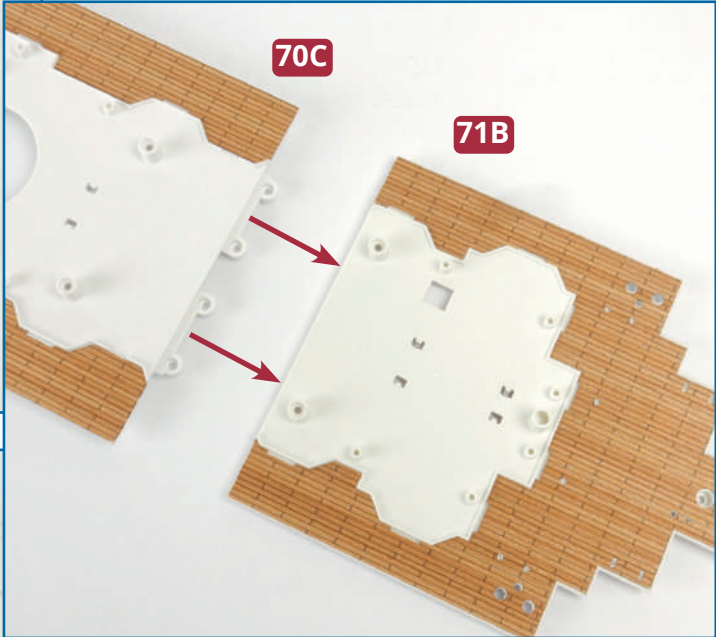
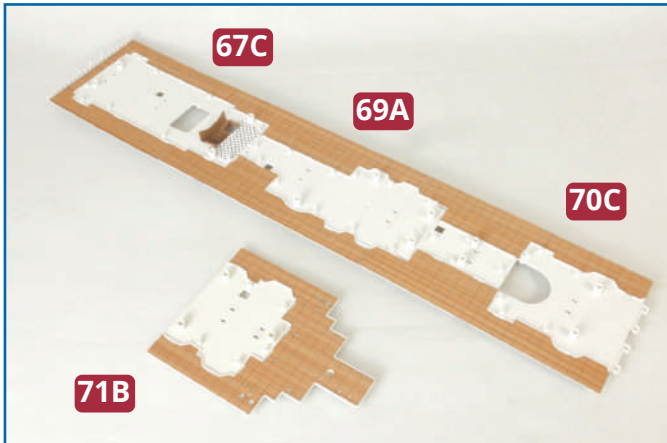
**71B** Aft section of the promenade deck

**AP** Five 2.3 x 5mm PB screws (1 spare)

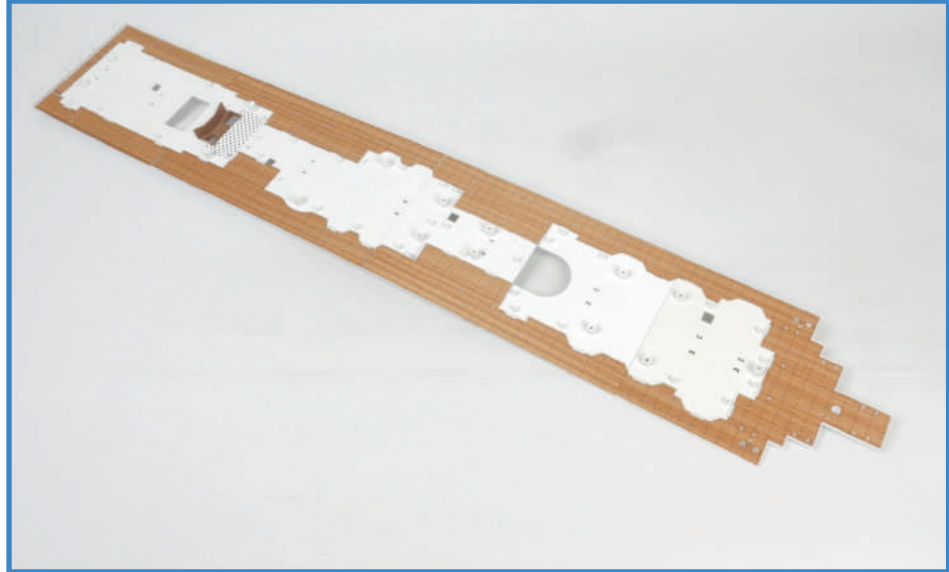


**1** Take the aft section of the promenade deck **71B** and the decking **71A**. Check how the decking fits on the deck, then remove the backing sheet and stick the decking in place, ensuring that all the holes are aligned. Smooth it down with a soft cloth. If necessary, use a scalpel to gently trim the decking along the outer deck edge.





**2** Take the promenade deck assembly from the previous issues and check how the screw holes at the aft end of the third deck section **70C** align with screw sockets on the underside of part **71B**. Turn the assembly over so that you can fix the fourth section of the promenade deck in place with four **AP** screws.

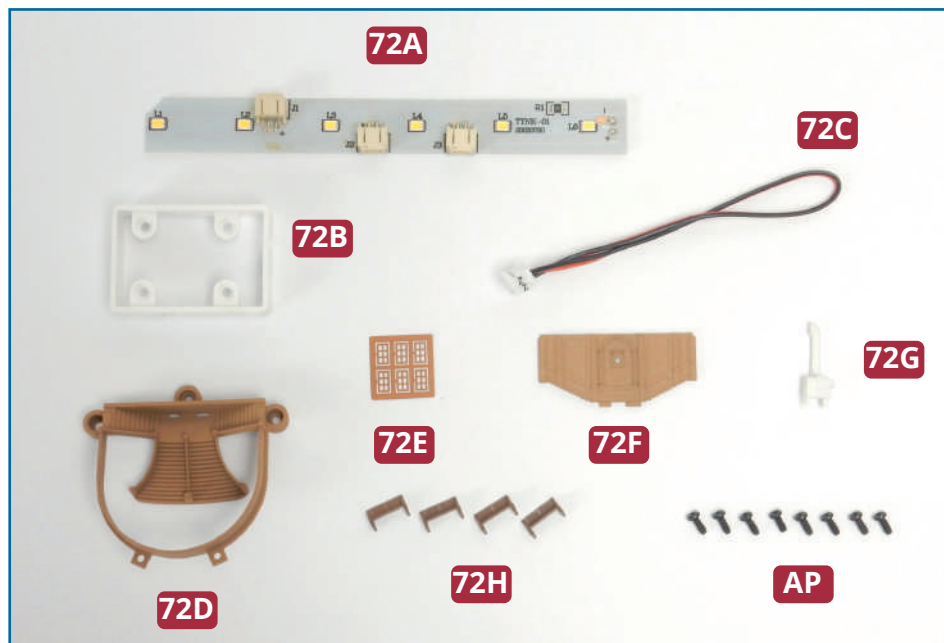


### **Completed work**

All four sections of the promenade deck have been fitted with decking and joined together.



# DETAILS FOR THE PROMENADE DECK



## PARTS IN THIS ISSUE

- 72A** LED strip

---

- 72B** Second-class entrance for boat deck

---

- 72C** LED cable

---

- 72D** First-class staircase

---

- 72E** Windows (x 6)

---

- 72F** Staircase panelling

---

- 72G** Ventilator

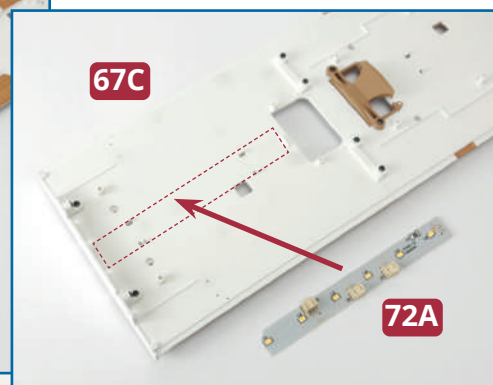
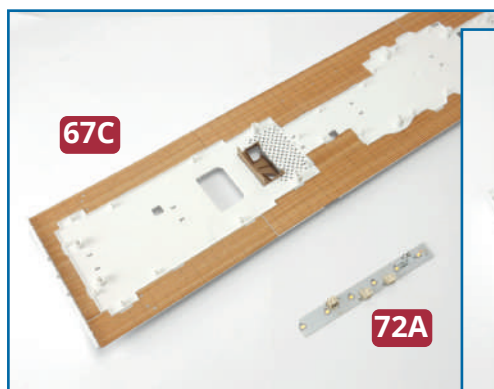
---

- 72H** Benches (x 4)

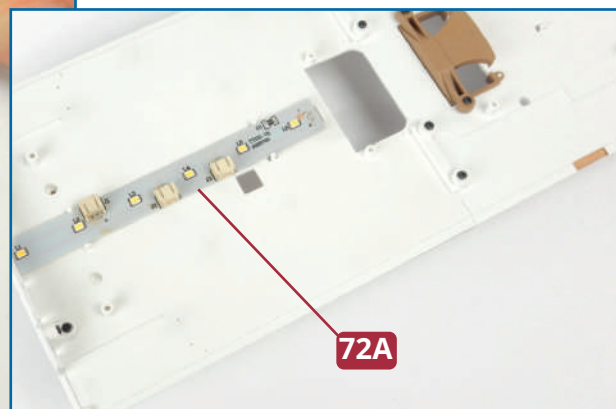
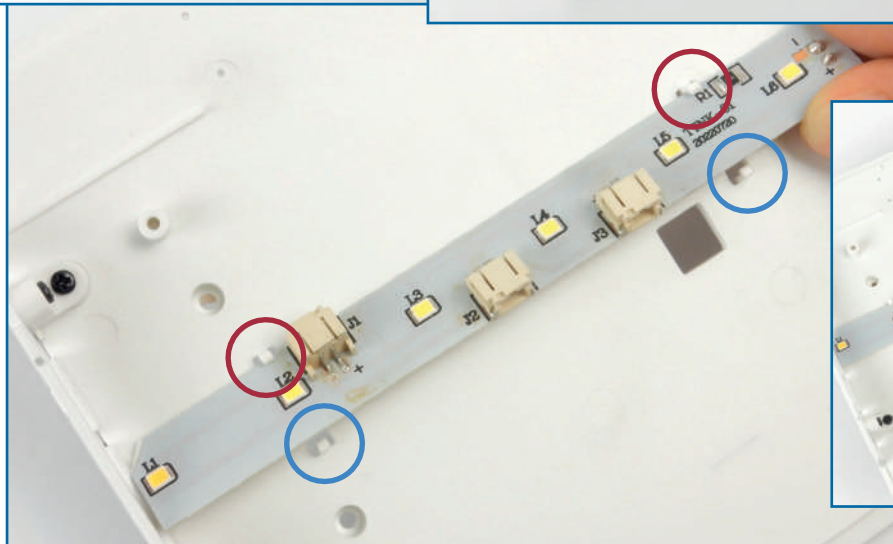
---

- AP** Eight 2.3 x 6mm PB screws (1 spare)

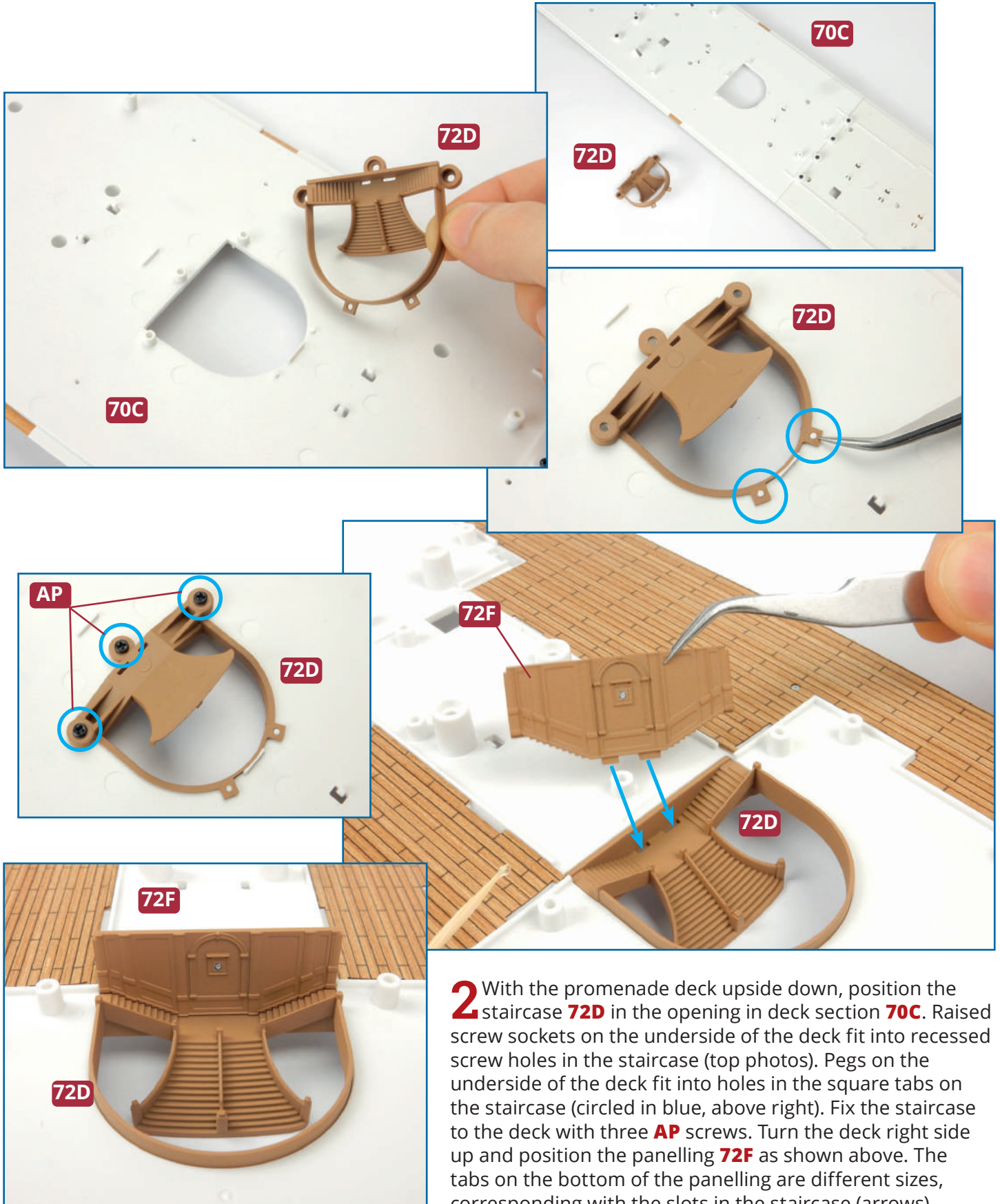
---

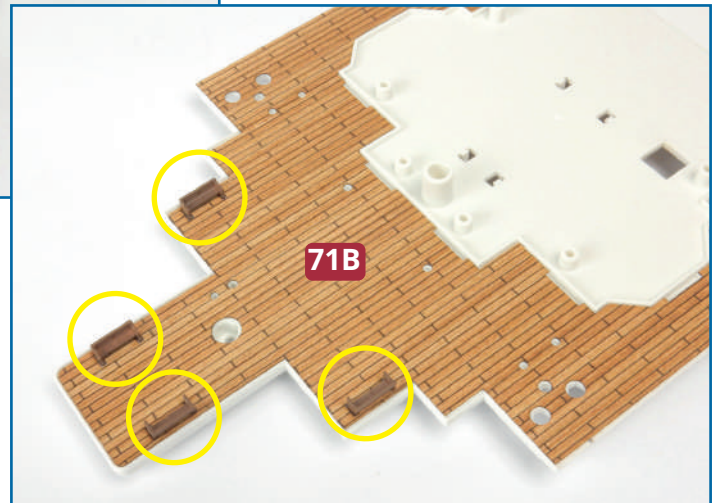
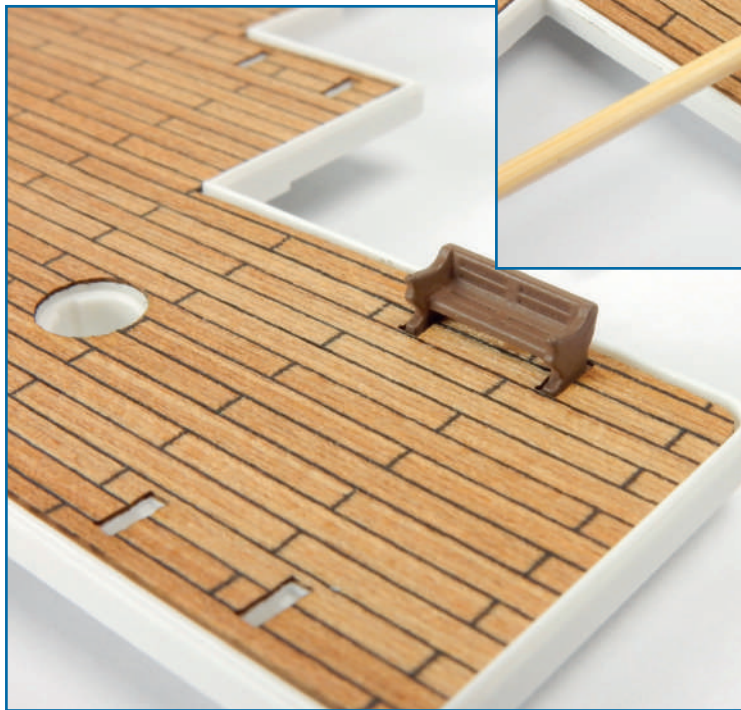
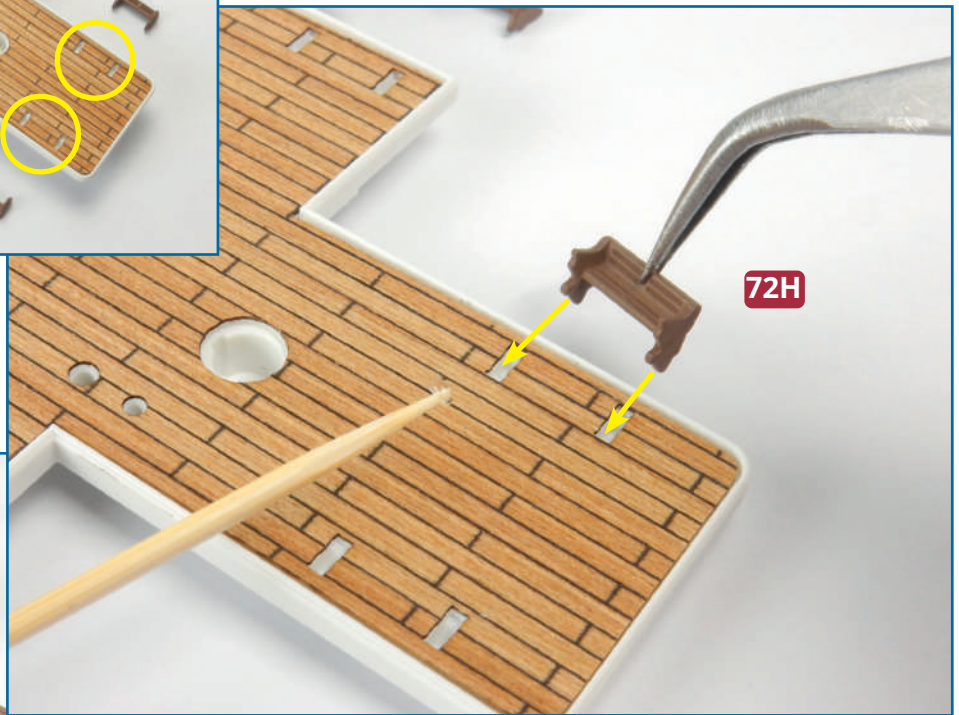
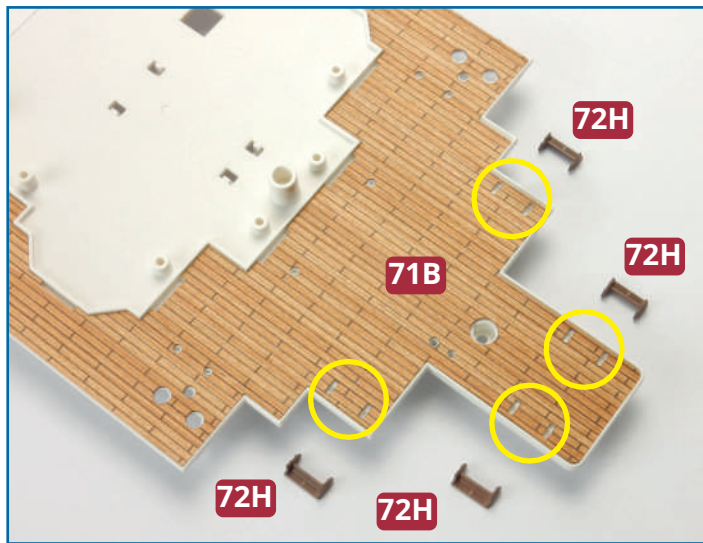
**1** Take the promenade deck from the previous issue and place it upside down on your work surface. Identify the position for the LED strip **72A** on the underside of deck section **67C**. Fit one side of the strip beneath the clips (circled in red, below left) then fit the other side, using a flat screwdriver to ease the clips (circled in blue, below left) in place if necessary.



# ★ STEP-BY-STEP INSTRUCTIONS ★

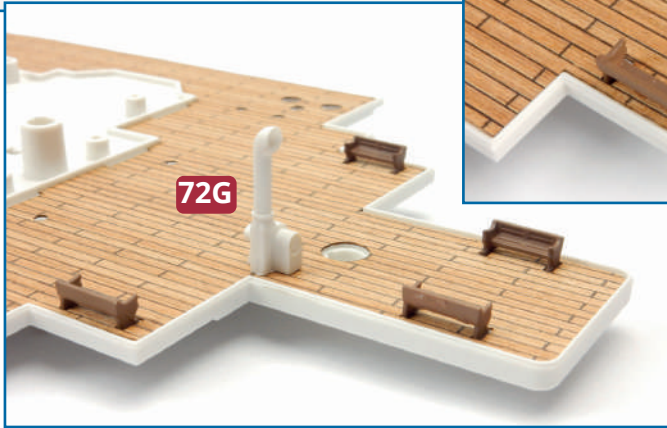
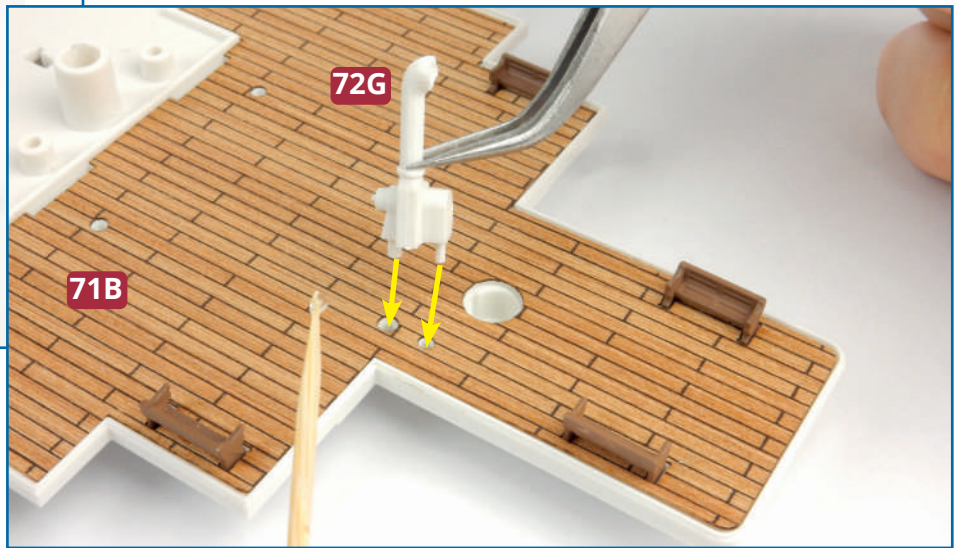
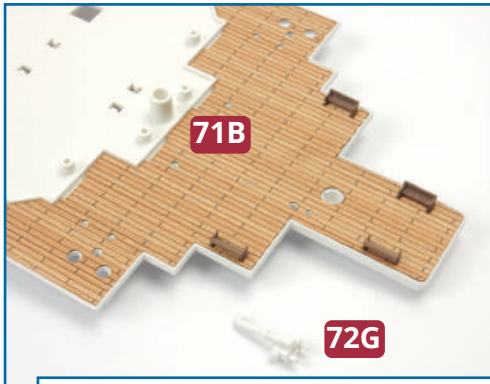


**2** With the promenade deck upside down, position the staircase **72D** in the opening in deck section **70C**. Raised screw sockets on the underside of the deck fit into recessed screw holes in the staircase (top photos). Pegs on the underside of the deck fit into holes in the square tabs on the staircase (circled in blue, above right). Fix the staircase to the deck with three **AP** screws. Turn the deck right side up and position the panelling **72F** as shown above. The tabs on the bottom of the panelling are different sizes, corresponding with the slots in the staircase (arrows).



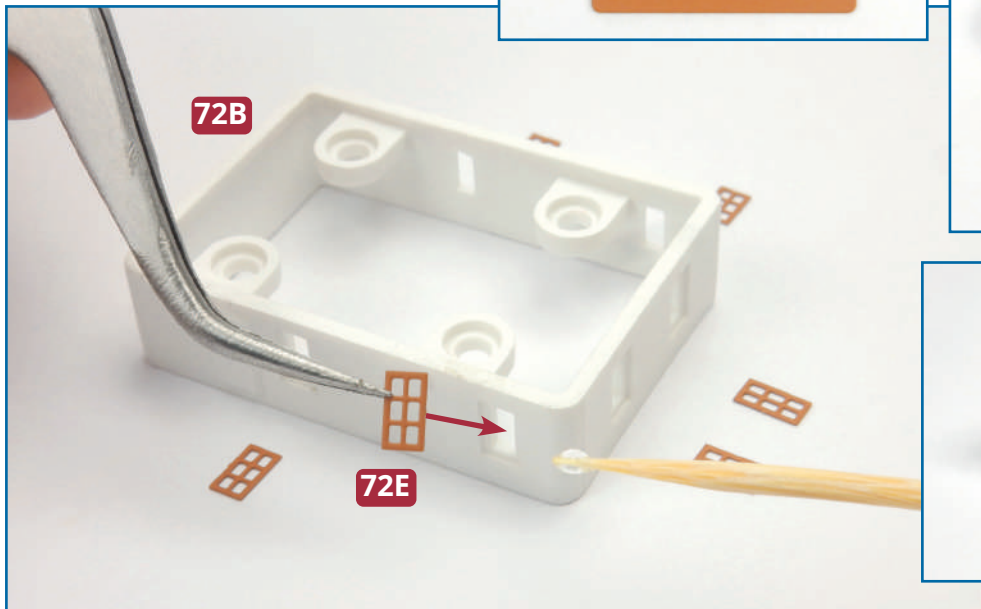
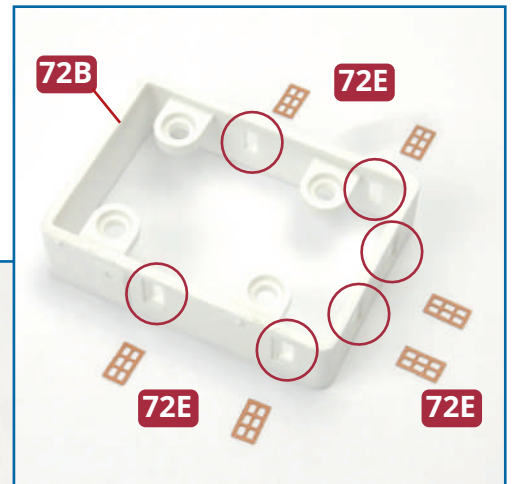
**3** Take the four benches **72H** and identify the slots where they are fitted on the aft section of the deck **71B** (circled in yellow, top). One at a time, apply a little glue to the base of each bench and fix it in place as shown (right).

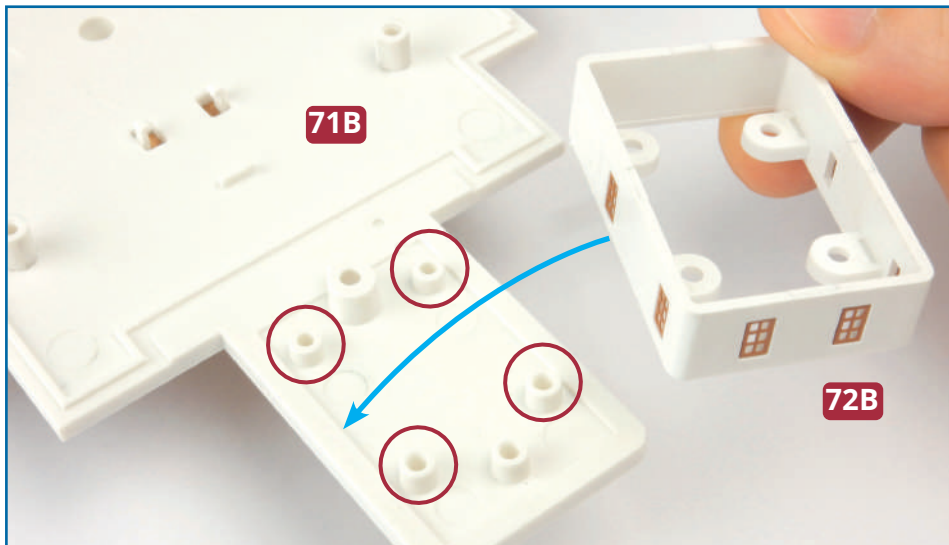
# ★ STEP-BY-STEP INSTRUCTIONS ★



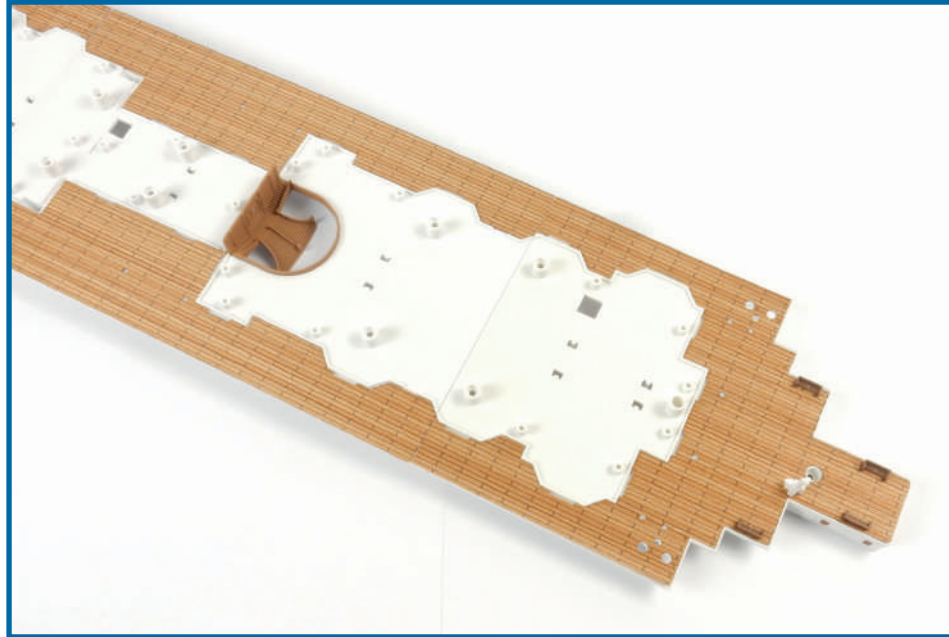
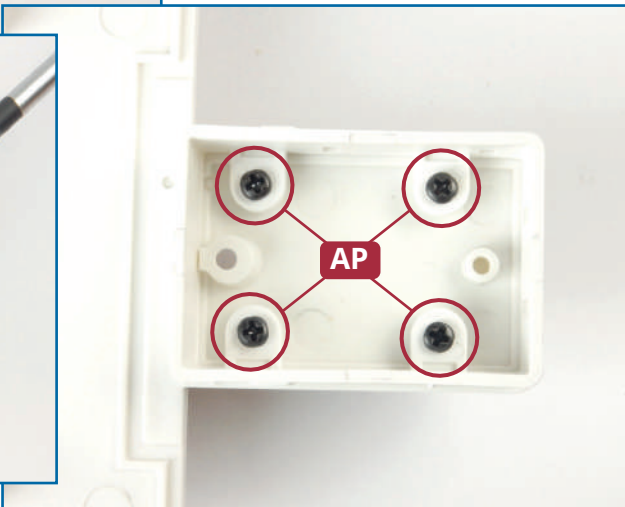
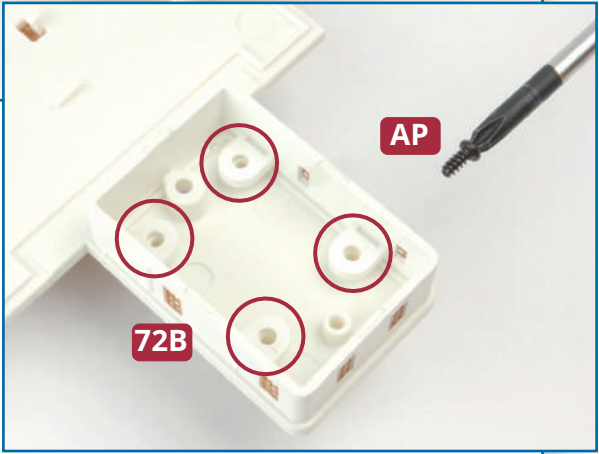
**4** Take the ventilator **72G** and check how it fits on the aft section of the promenade deck **71B**. The pegs on the base of the ventilator are different sizes to ensure you fit it the right way round. Glue in place as shown.

**5** Carefully remove the six windows from the frame **72E**. Take the second-class entrance **72B** and glue one of the windows into each of the openings (circled, far right). You may find it helpful to use a pair of tweezers.





**6** With the promenade deck upside down, position the second class entrance **72B** on the rectangle at the aft end of section **71B**. Fix part **72B** in place with four **AP** screws.

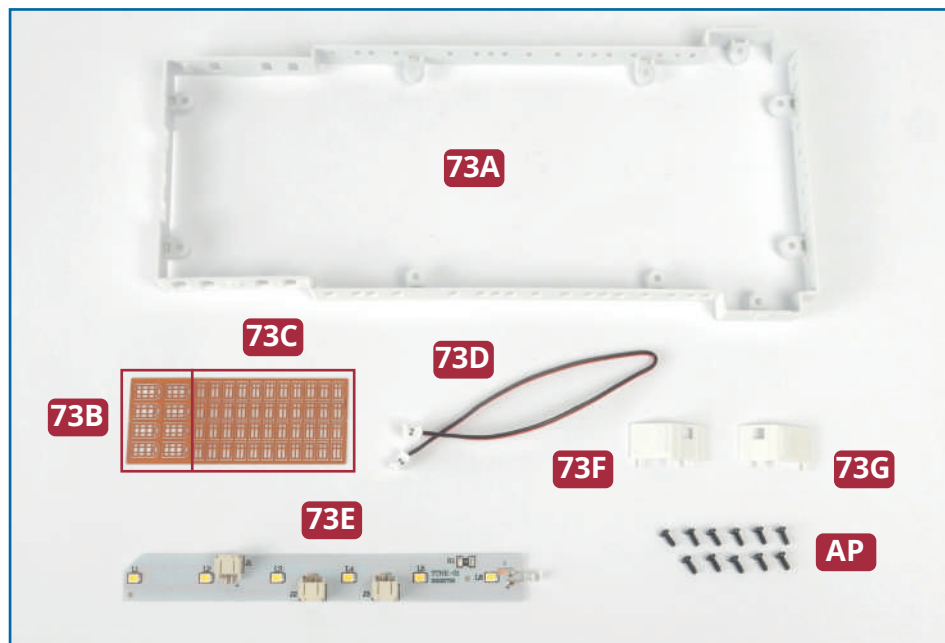


**Completed work**

The first-class staircase, second-class entrance and other details have been fitted to the promenade deck. The cable **72C** will be connected in a future issue.

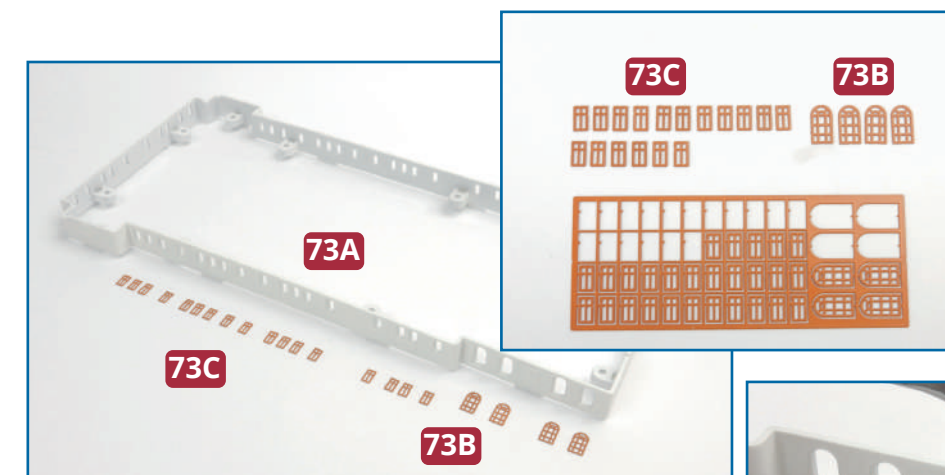


# FIRST-CLASS ENTRANCE AND CABINS

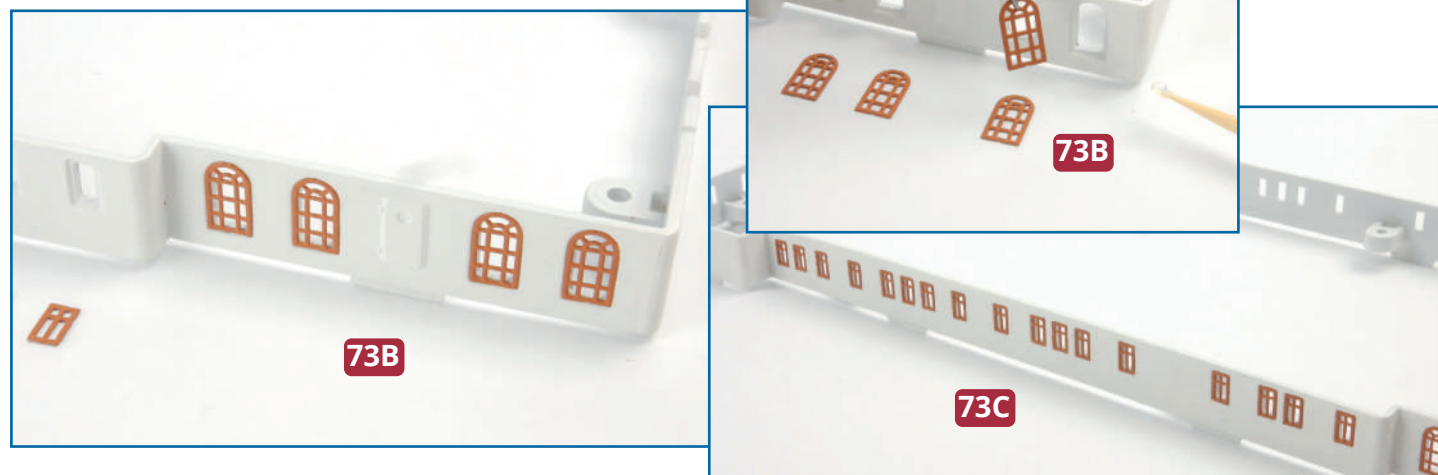


## PARTS IN THIS ISSUE

- 73A** First-class entrance and cabins
- 73B** Large windows (8)
- 73C** Small windows (44)
- 73D** LED cable
- 73E** LED strip
- 73F** Starboard partition bulkhead
- 73G** Port partition bulkhead
- AP** Eleven 2.3 x 5mm PB screws (1 spare)

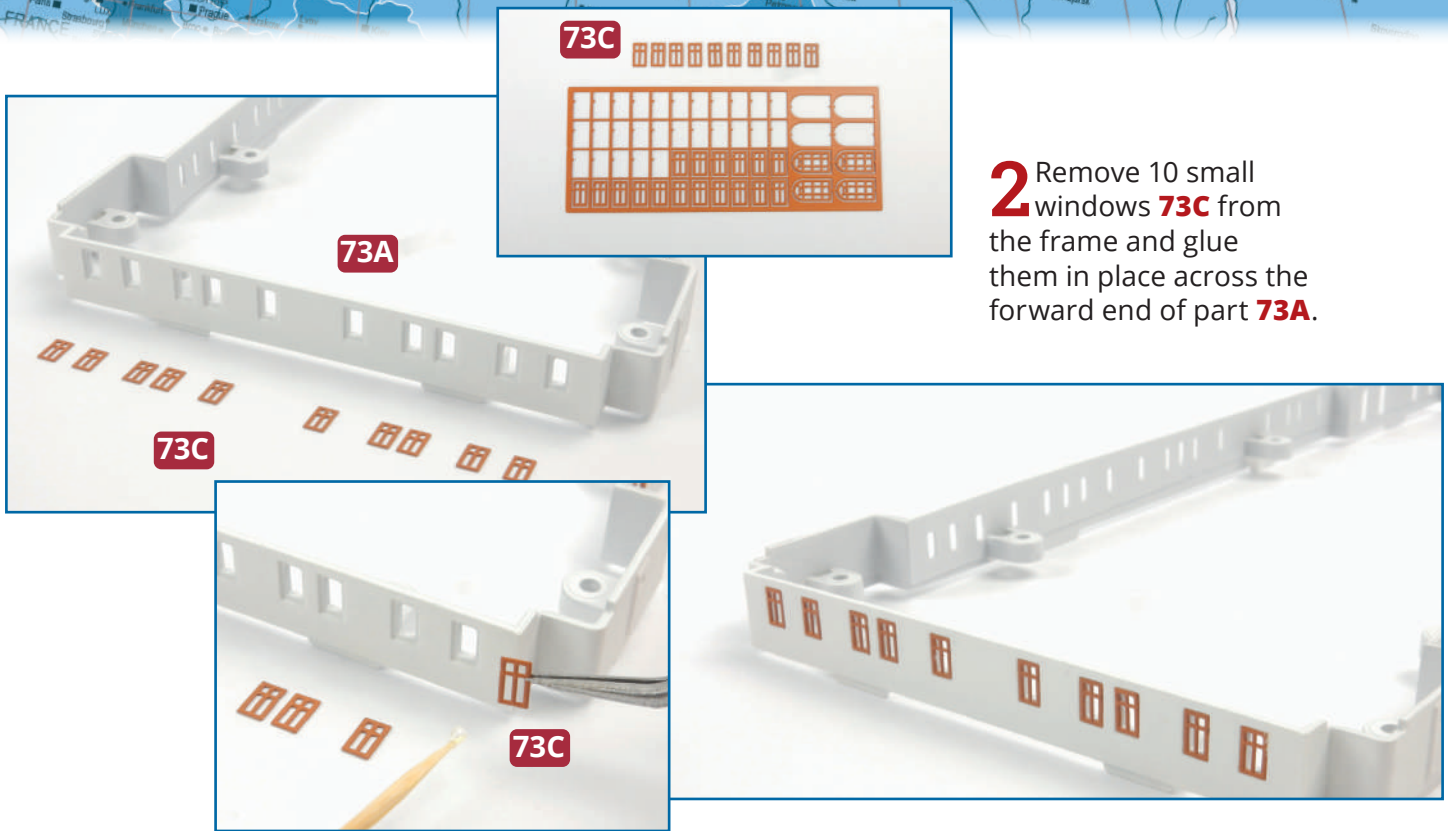


**1** Remove 4 large windows **73B** and 17 small windows **73C** from the frame. Working from the aft end (the right in these photos) glue the windows in the openings on the port side of the first-class entrance and cabins **73A**, as shown, ensuring that the horizontal mullions are at the top.

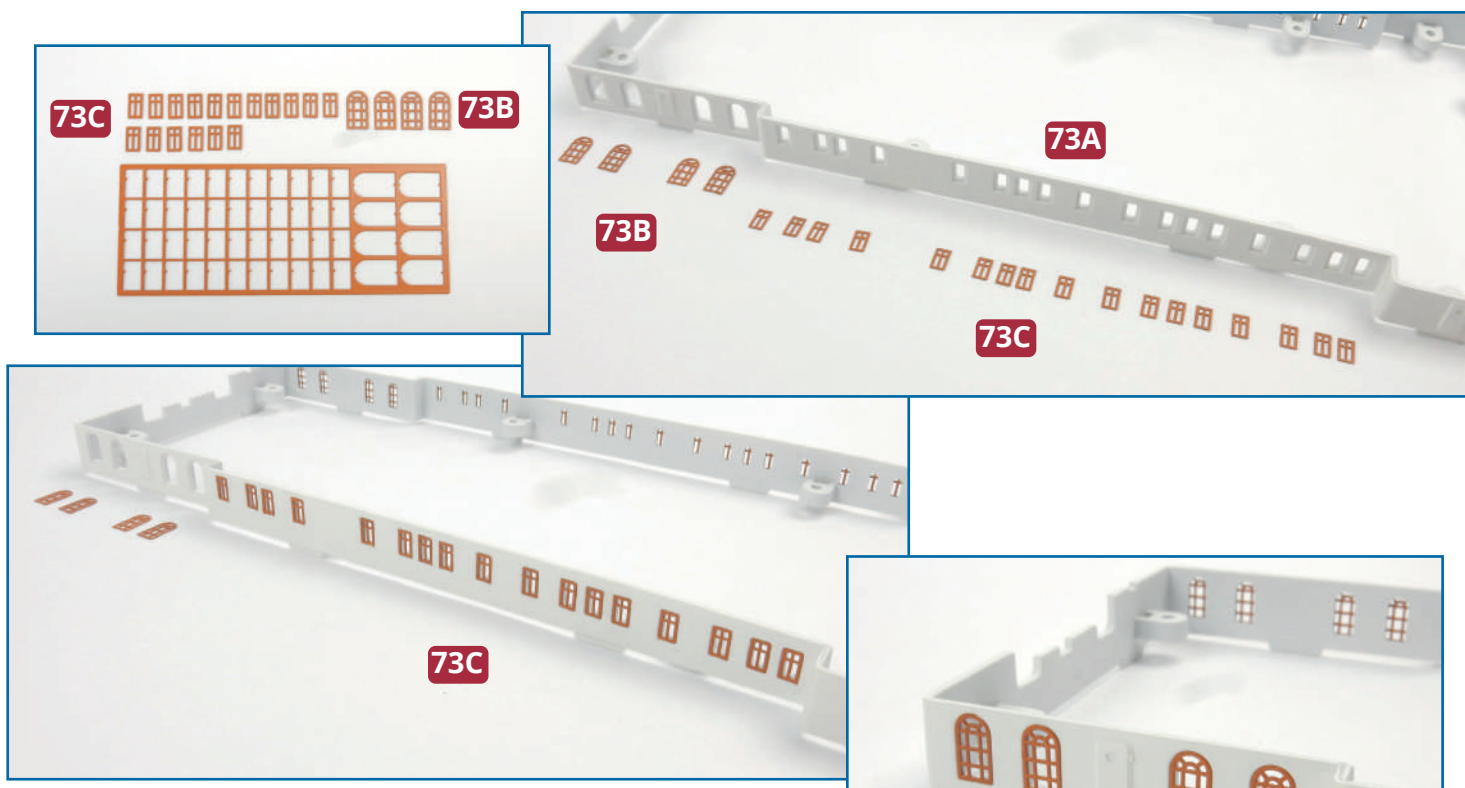




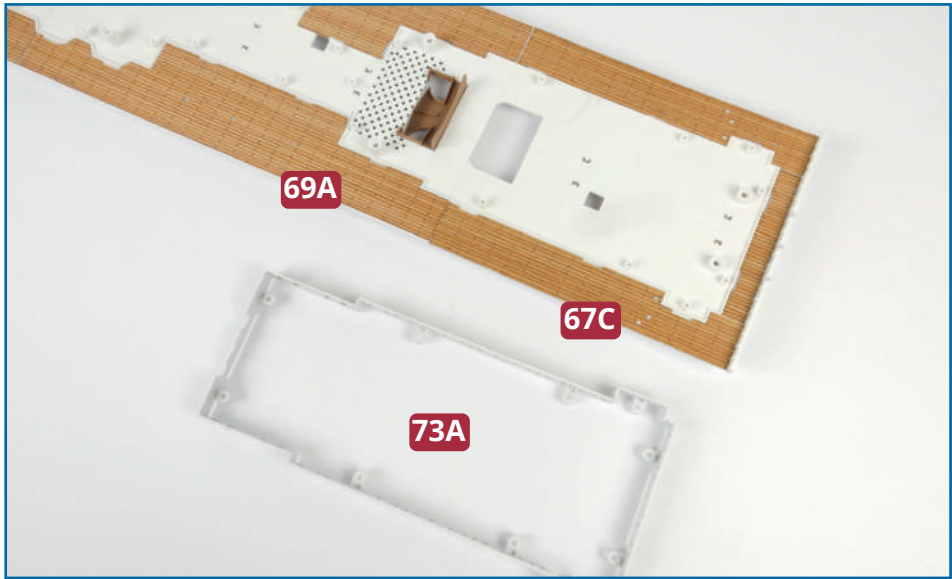
★ **STEP-BY-STEP INSTRUCTIONS** ★



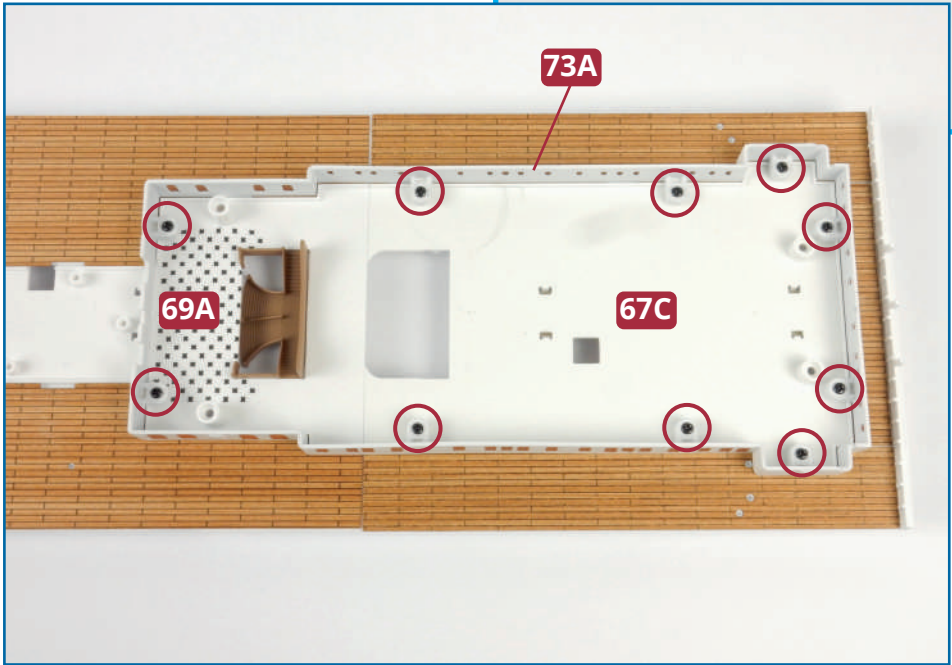
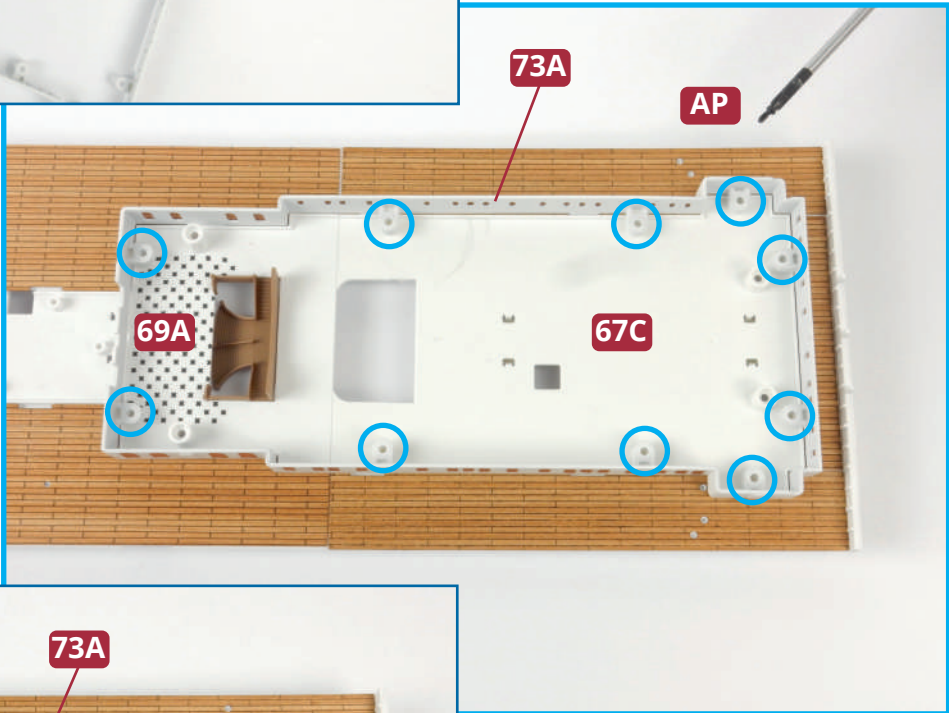
**2** Remove 10 small windows **73C** from the frame and glue them in place across the forward end of part **73A**.



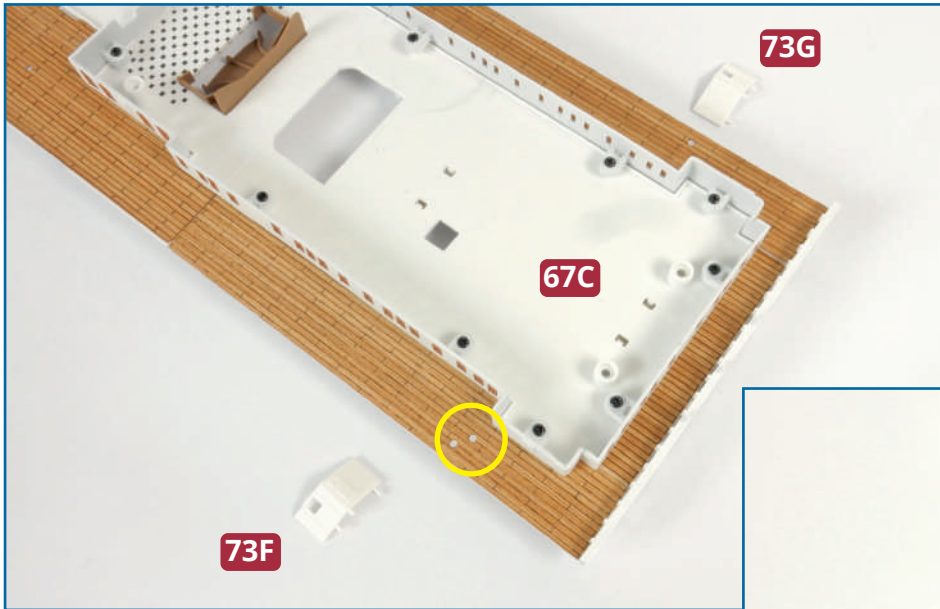
**3** Remove the remaining windows from the frame. These are fixed in place on the starboard side of part **73A**: 17 small windows **73C** are for the cabins and 4 large windows **73B** are for the first-class entrance.



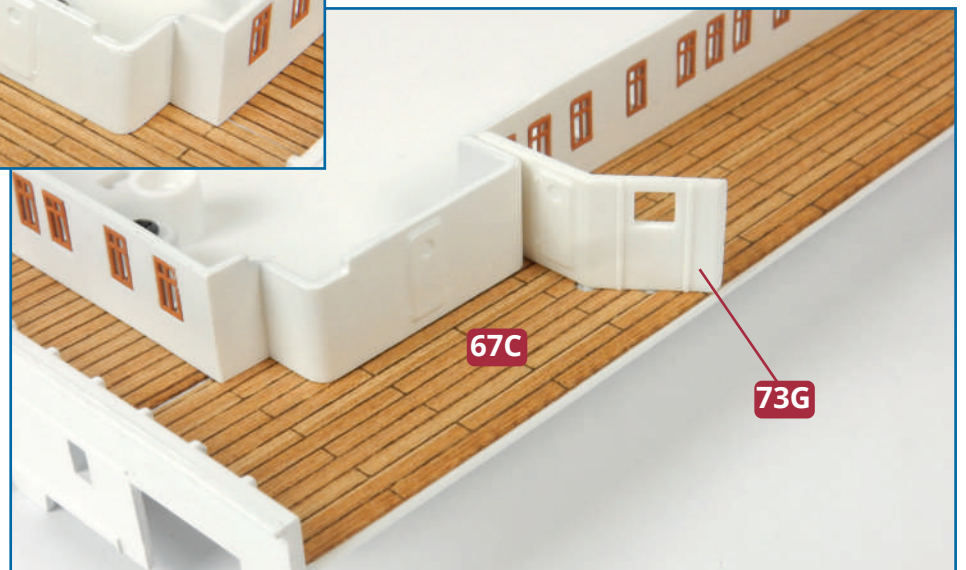
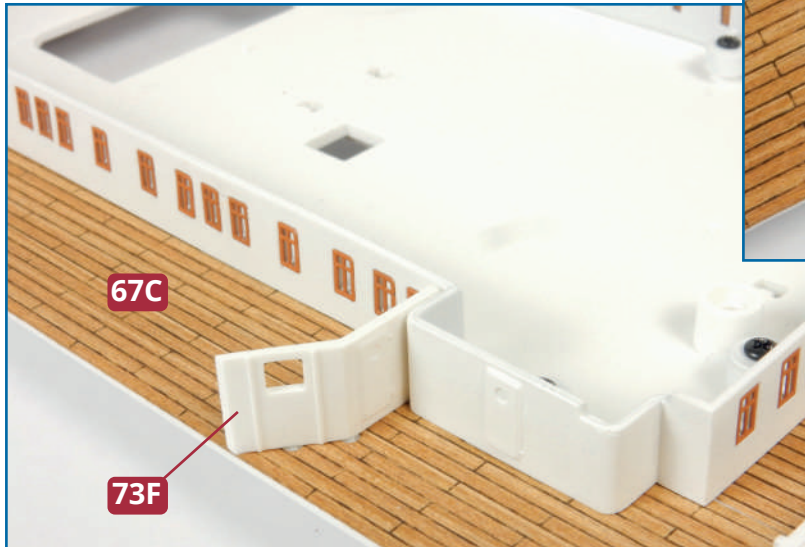
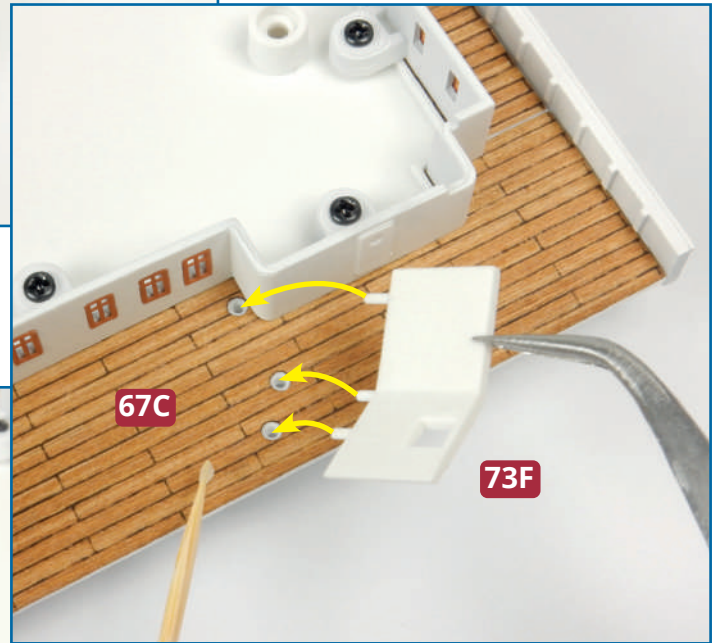
**4** Position the first-class entrance and cabins **73A** on the forward section of the promenade deck **67C** and **69A**. 10 tabs with screw holes on part **73A** (circled in blue, right), fit over the screw sockets on the deck sections. Fix in place with 10 **AP** screws (circled, below).



★ STEP-BY-STEP INSTRUCTIONS ★

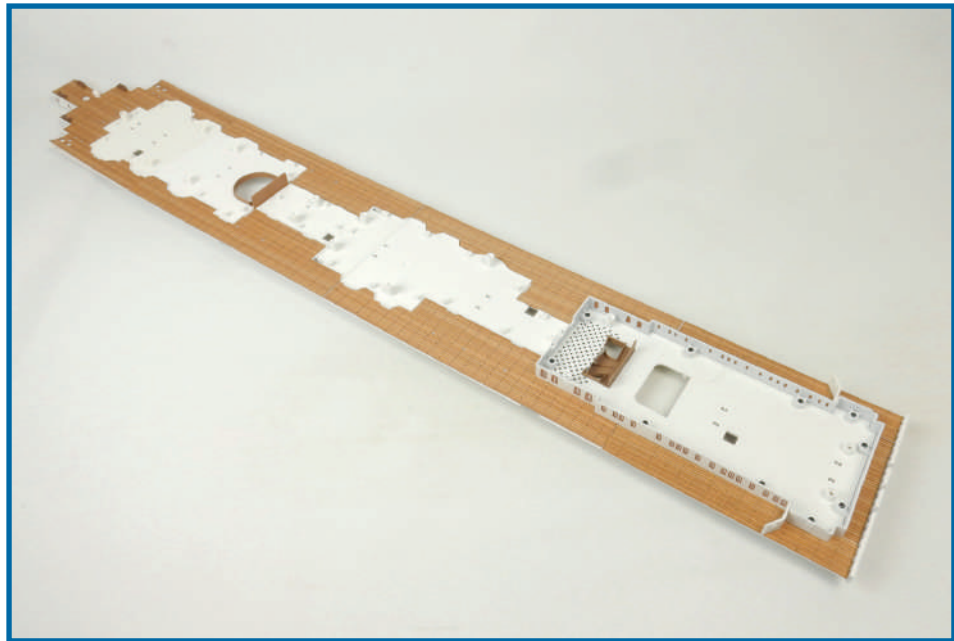
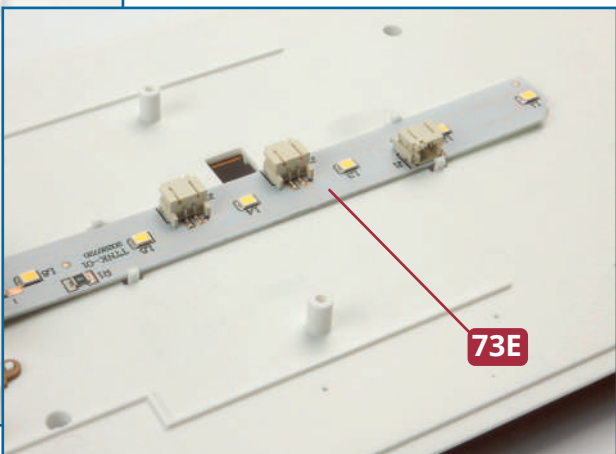
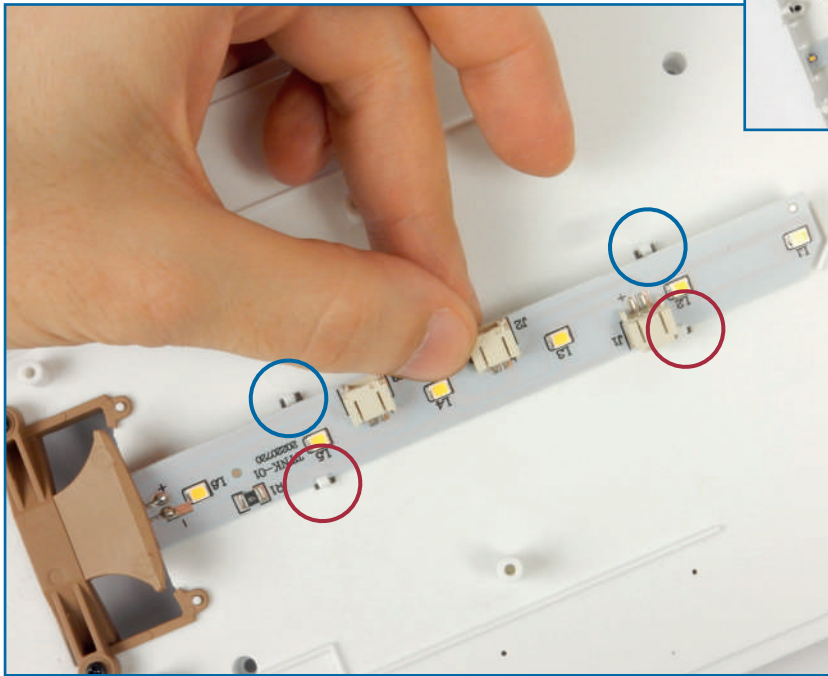
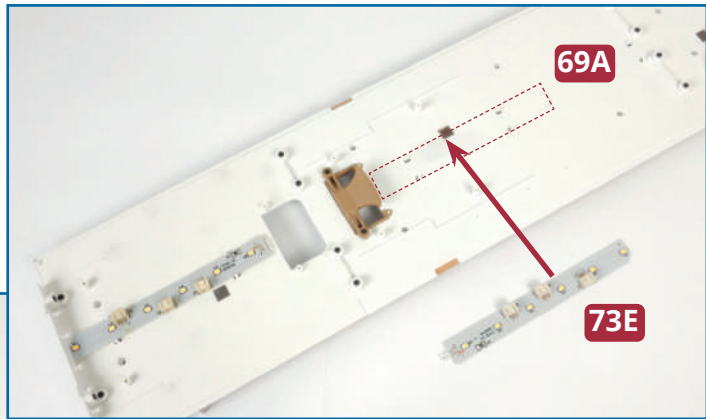


**5** Take the two partition bulkheads **73F** and **73G**. Fit the starboard partition **73F** in the position indicated on the promenade deck **67C** and glue it in place. Glue partition **73G** in place on the port side of the deck **67C** as shown.





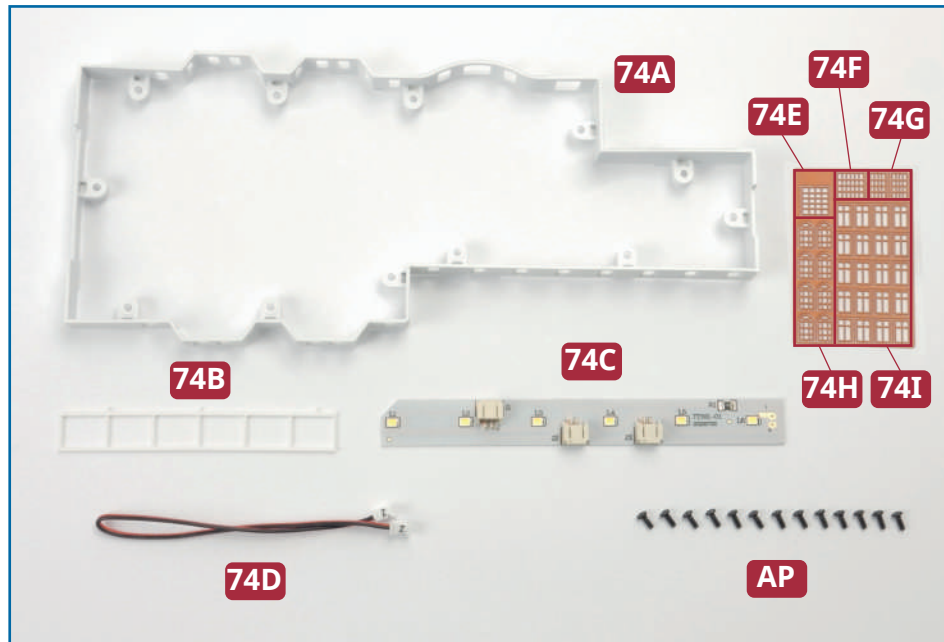
**6** Turn the promenade deck upside down and identify the fixing position for the LED strip **73E** on the underside of deck section **69A**. Fit one side of the strip beneath the clips circled in red, below, and the other side under the clips circled in blue, using a flat screwdriver to ease the LED in place if necessary.



### **Completed work**

The first-class entrance and cabins have been fixed to the promenade deck, along with two partitions. The cable **73D** will be connected in a future issue.

# FIRST-CLASS LOUNGE



## PARTS IN THIS ISSUE

**74A** First-class lounge

**74B** Support stucture

**74C** LED strip

**74D** LED cable

**74E** Large window A (x 1)

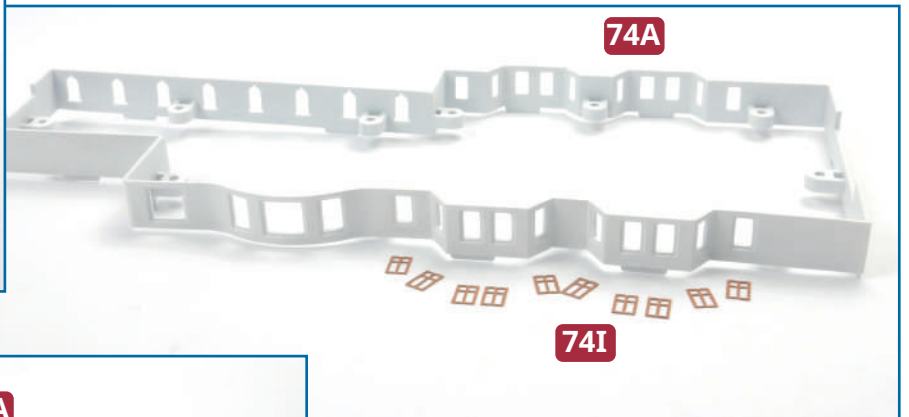
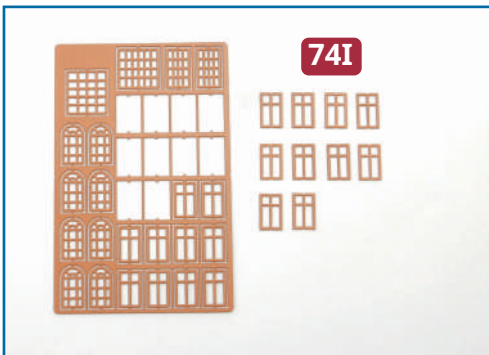
**74F** Large window B (x 1)

**74G** Large windows C (x 2)

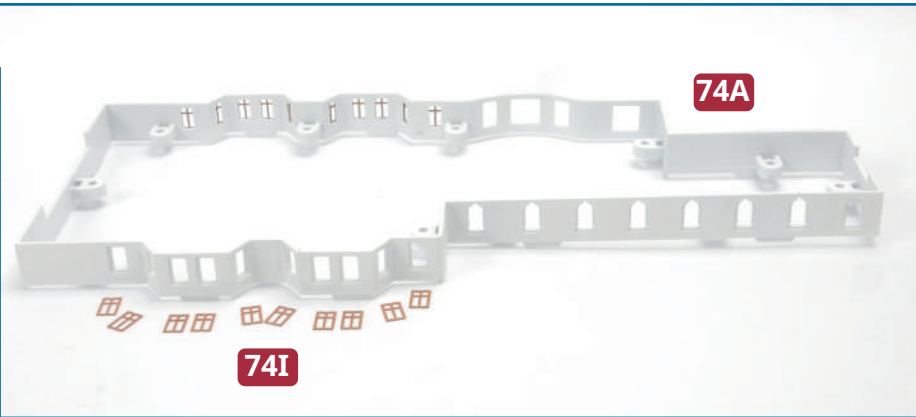
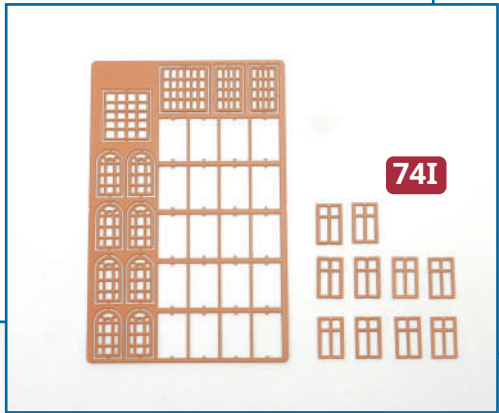
**74H** Small windows D (x 8)

**74I** Small windows E (x 20)

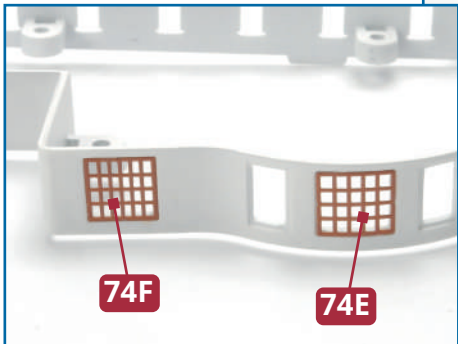
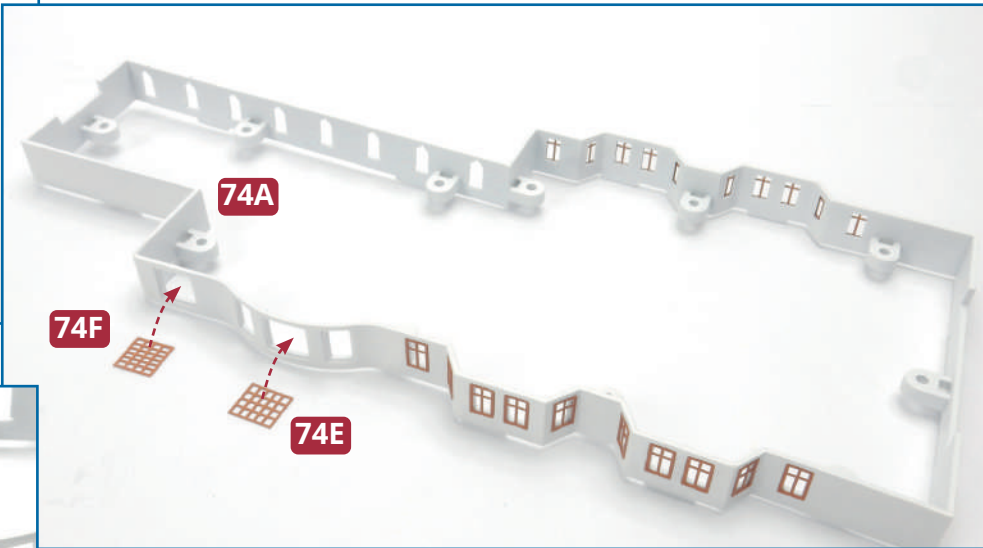
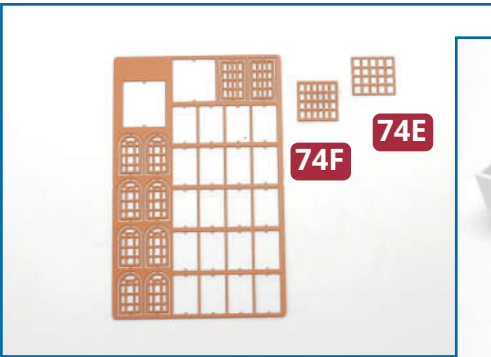
**AP** Thirteen 2.3 x 5mm PB screws (1 spare)



**1** Remove 10 small windows **74I** from the frame. Glue them in place on the port wall of the first-class lounge **74A**, as shown, ensuring that the horizontal mullions are at the top.

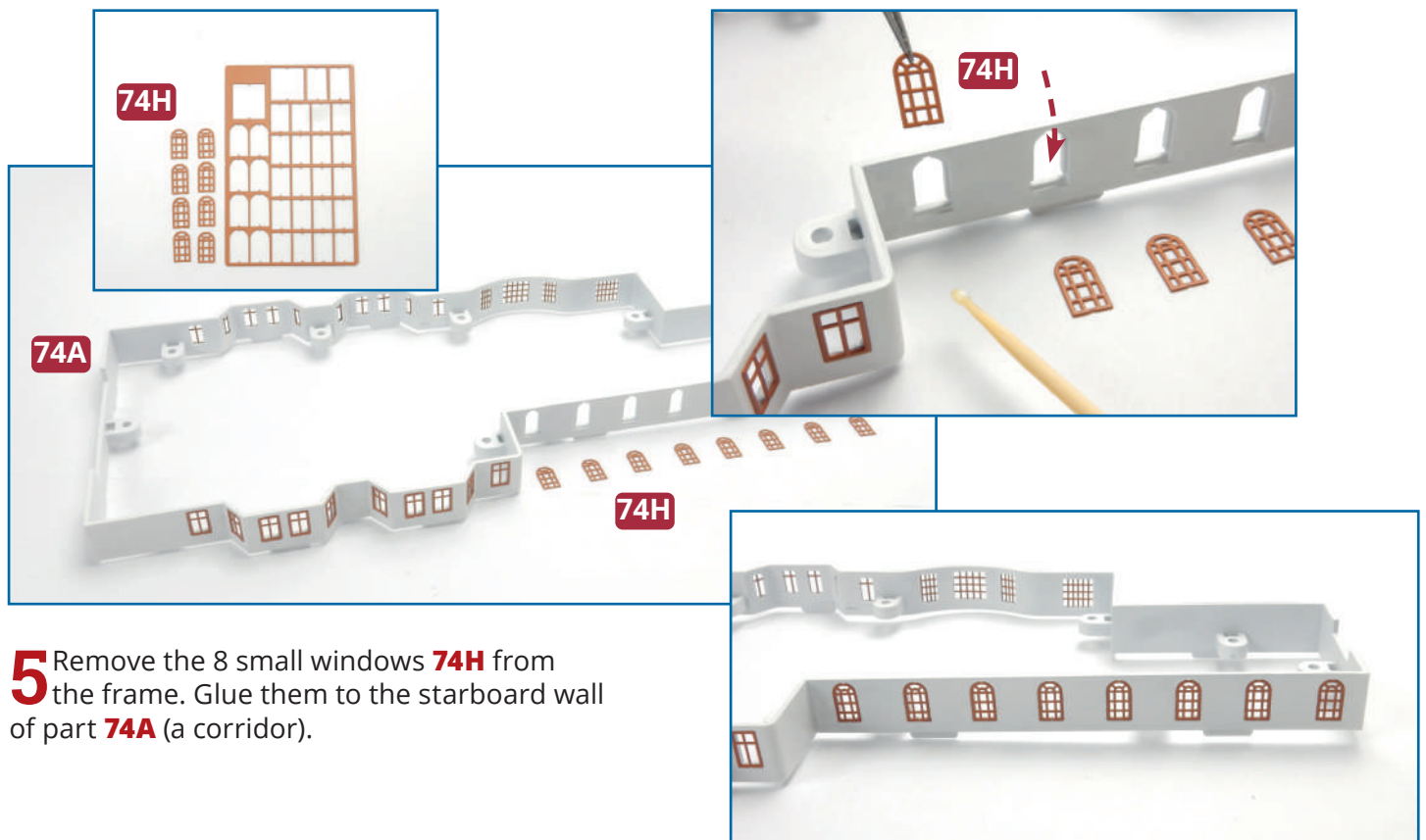
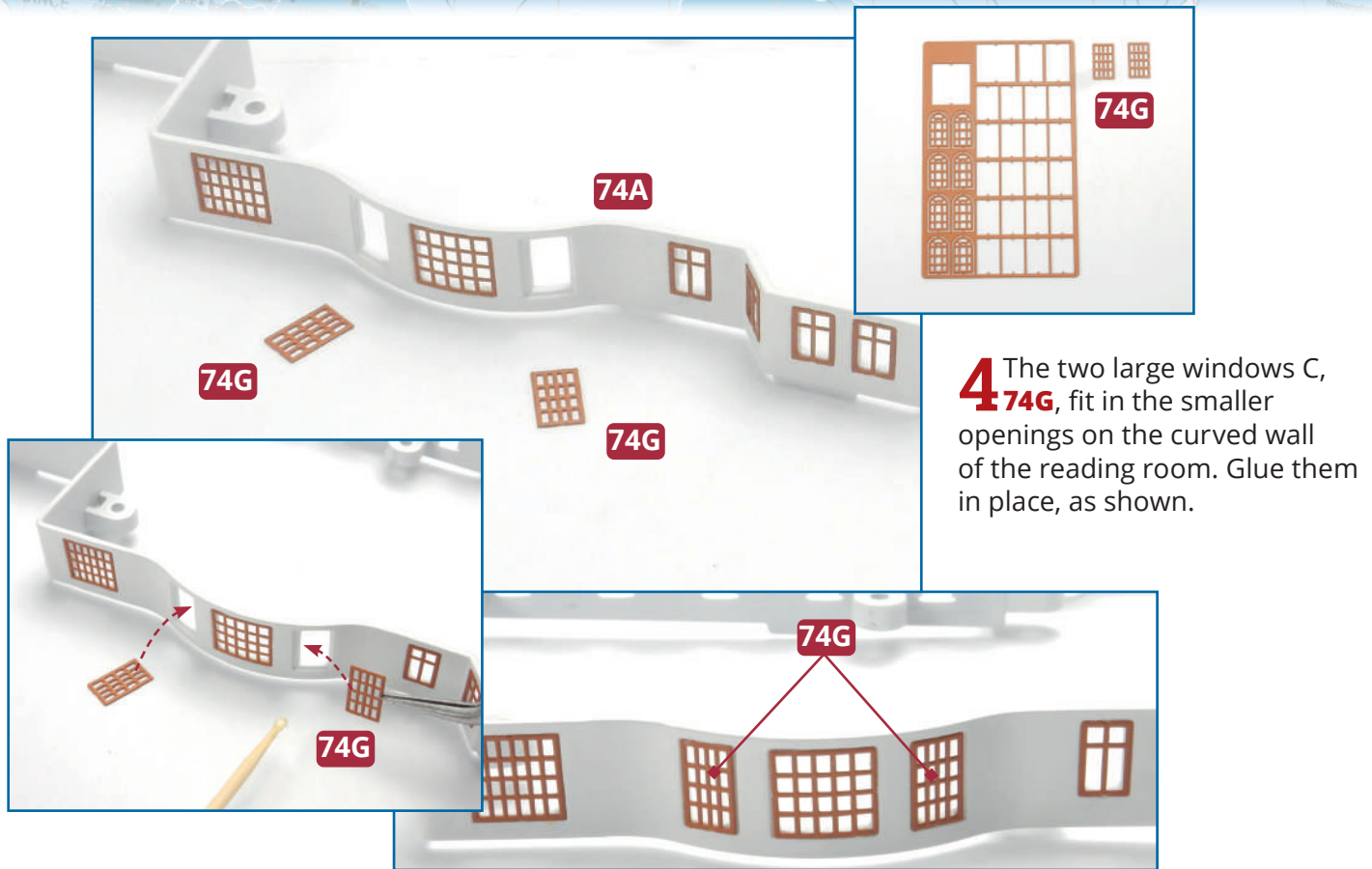


**2** Remove 10 more small windows **74I** from the frame. Glue them in place on the starboard wall of the first-class lounge **74A**, as shown.



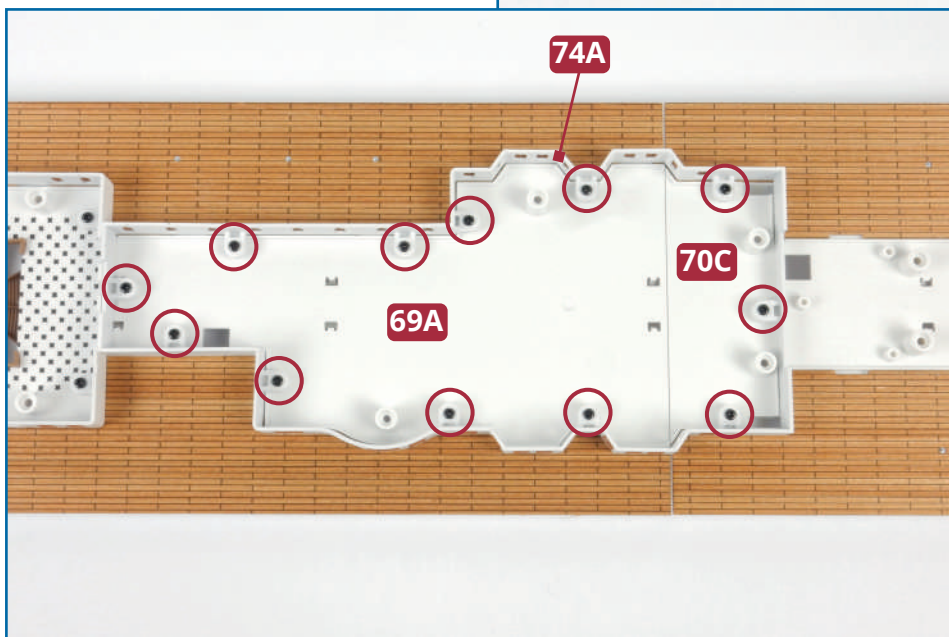
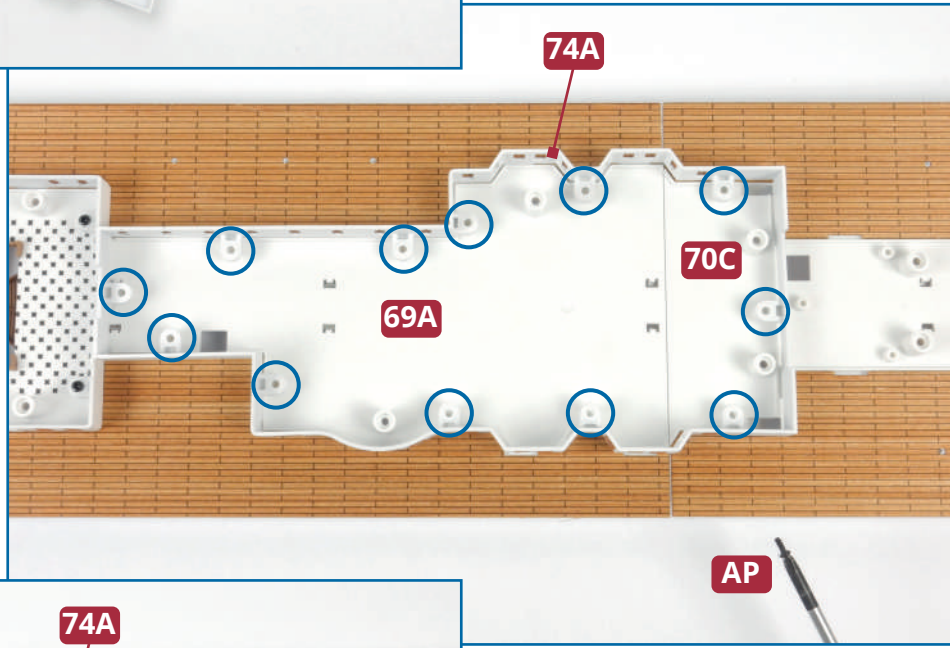
**3** Remove the large windows **74E** and **74F** from the frame. These windows are for the first-class reading room at the forward end of the first-class lounge. Bend them very gently to curve them slightly, then glue the windows in place on the port wall of part **74A**, as shown.

## ★ STEP-BY-STEP INSTRUCTIONS ★

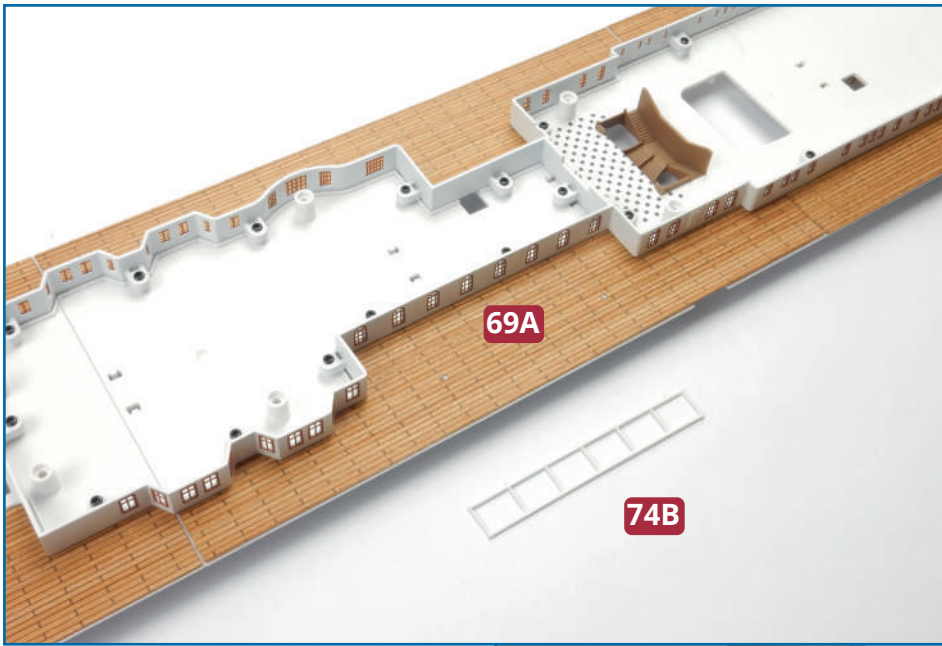




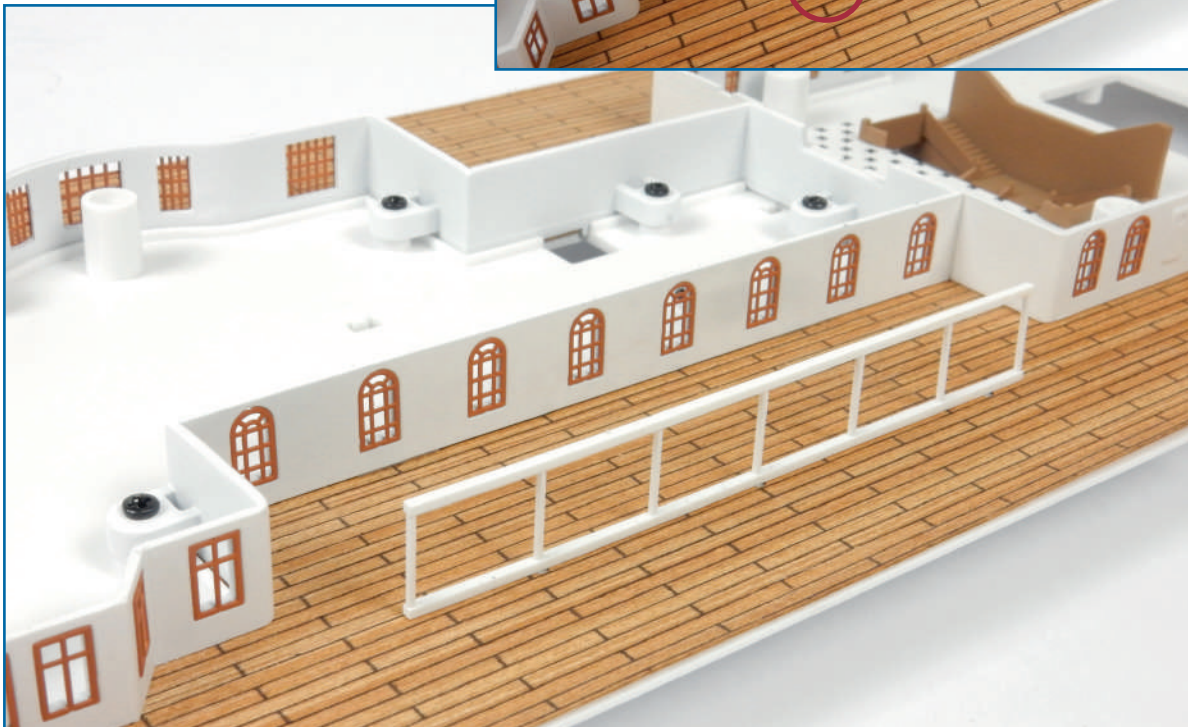
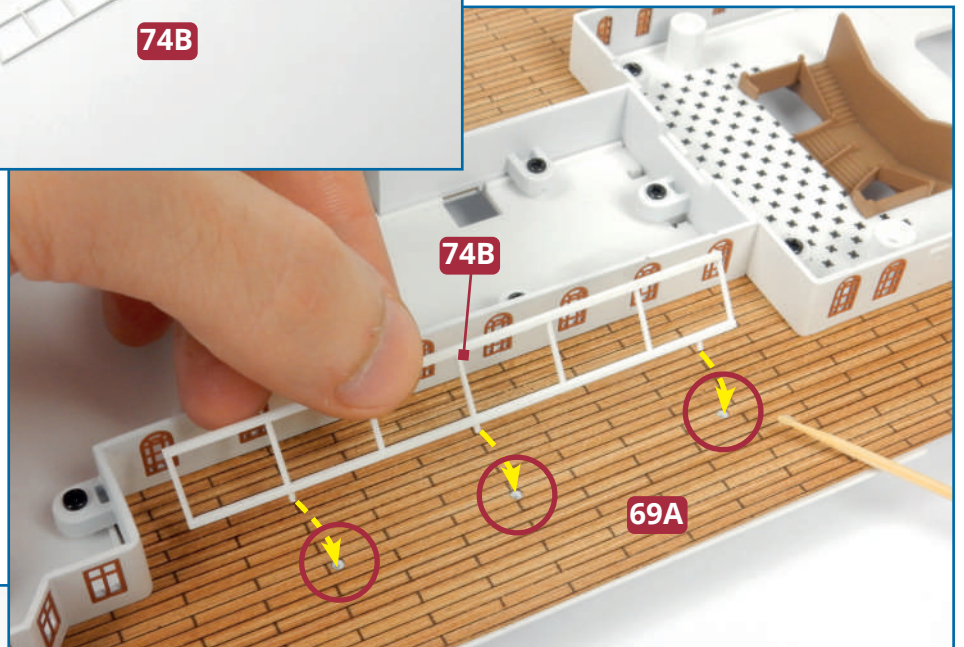
**6** Fit part **74A** in place on the middle section of the promenade deck (**69A** and **70C**). Ensure that the screw holes (circled in blue, below) are aligned and fix them in place with 12 **AP** screws (circled in red, bottom).

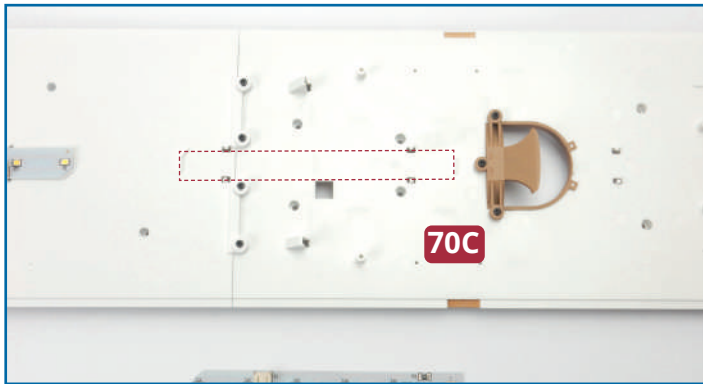




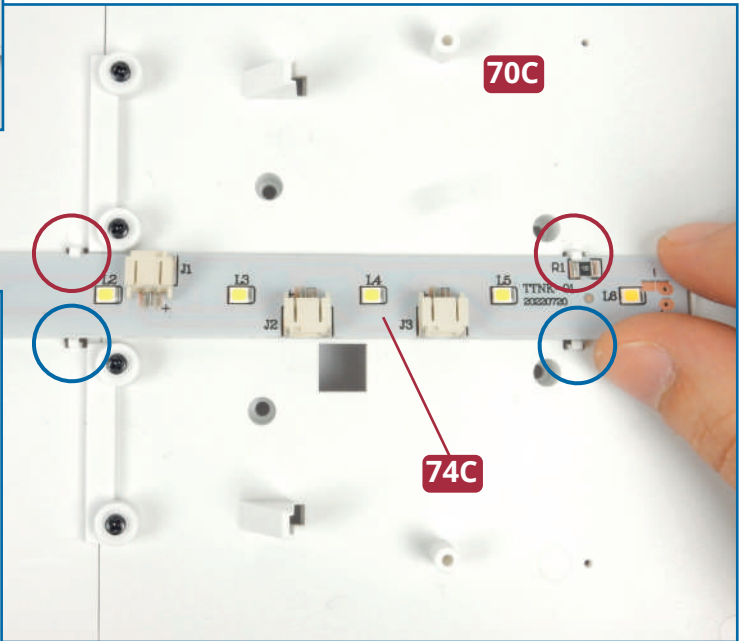
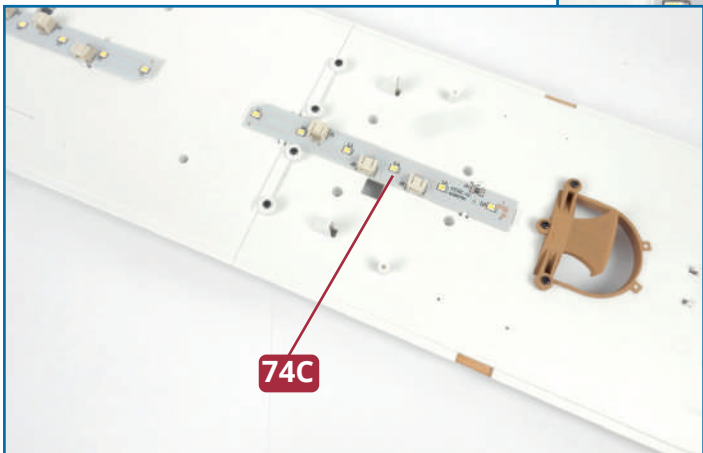


**7** Take the support structure **74B** and check how it fits on the starboard side of deck A (section **69A**). Pegs on the base of the support structure fit into holes in the deck (circled in red, right). Glue the pegs of the support structure in place.





**8** Carefully turn the promenade deck over and identify the fixing point (indicated left) for the LED strip **74C** on the underside of deck section **70C**. Fit one side of the strip under the clips (circled in red, below) and the other side under the clips (circled in blue) using a flat screwdriver to ease the LED into place, if necessary.



## Completed work

The first-class cabin and reading room, with windows, have been fitted to the promenade deck. The cable **74D** will be connected in a future issue.

